



HARDINGS



King Stable Street
Price Guide £900,000






Positioned within the prestigious Eton Riverside development, this superb three-bedroom apartment enjoys stunning views across the River Thames towards Windsor Castle, whilst offering spacious and versatile accommodation throughout.

The heart of the home is a generous reception and dining room, with access to two of the three private balconies that make the most of the exceptional setting and view of the River & Windsor Castle. The apartment also benefits from a well-equipped kitchen, three bedrooms, ample built-in wardrobes throughout and lift access.

Further advantages include an underground allocated parking space and a large secure storage unit, both highly sought-after features in this central riverside location.

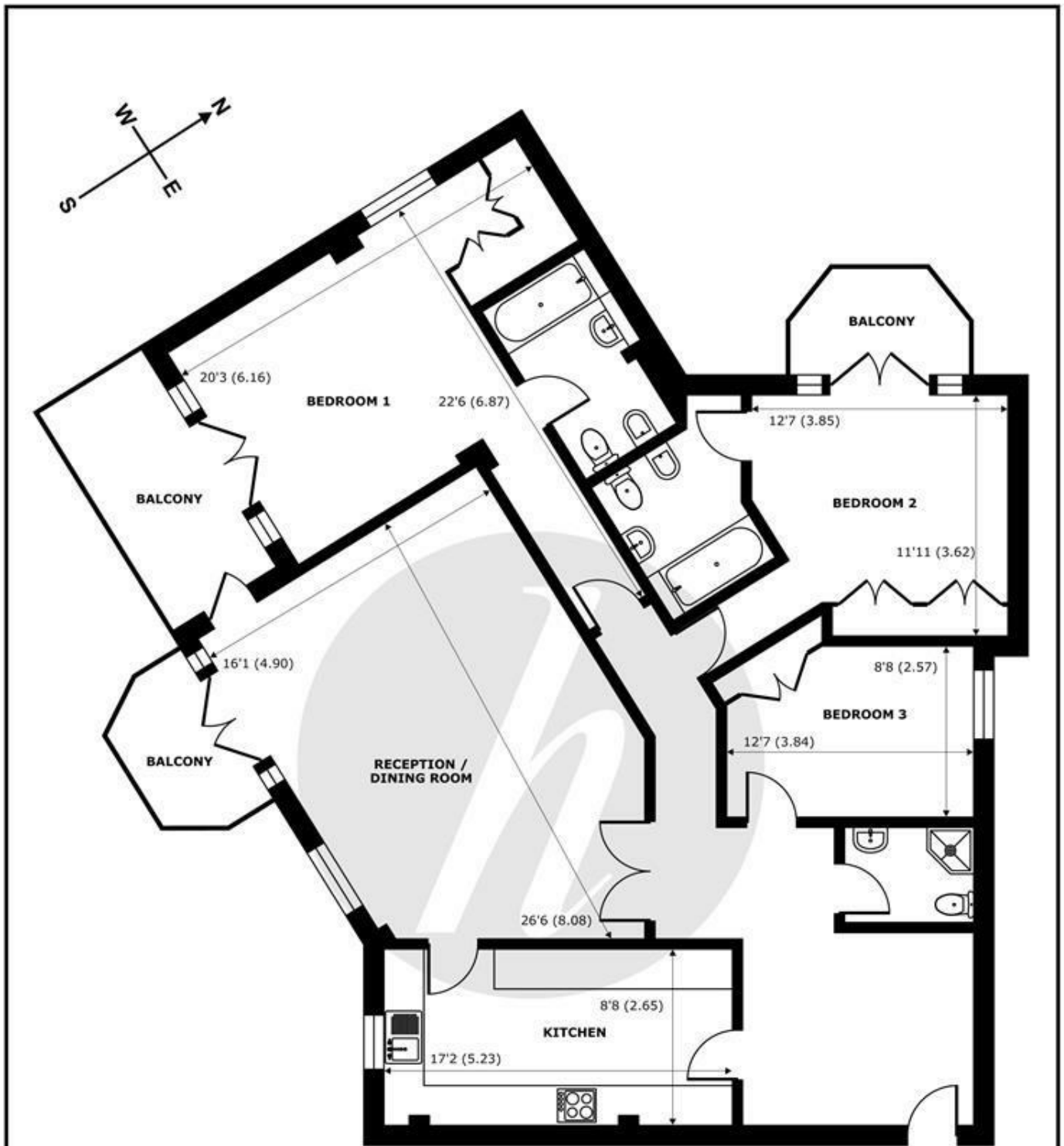
Eton Riverside is perfectly placed for enjoying everything Eton and Windsor have to offer, with independent shops, cafés, restaurants and rail connections all within easy walking distance. Combining convenience, security and spectacular views, this is an excellent opportunity to acquire a prime riverside apartment in one of the area's most desirable developments.

Please note that some images have been virtually staged using CGI for illustrative purposes. Furniture, furnishings and decorative items shown may not be present at the property

Energy Efficiency Rating		Current	Potential
<i>Very energy efficient - lower running costs</i>			
(92 plus) A			
(81-91) B		83	83
(69-80) C			
(55-68) D			
(39-54) E			
(21-38) F			
(1-20) G			
<i>Not energy efficient - higher running costs</i>			
England & Wales		EU Directive 2002/91/EC 	

Features

- Three Bedroom Apartment
- Three Private Balconies
- Ample Built in Storage Throughout
- Lift Access
- Riverside Development
- Underground Allocated Parking Space
- Views of Windsor Castle & River Thames
- Spacious Reception/ Dining Room
- Close Proximity To Local Amenities
- Large Secure Storage Unit



SECOND FLOOR
 abt 1552 SQFT (144.1 SQMT)

King Stable Street, Eton, Windsor, SL4

Approximate Internal Area = 1387 sq ft / 128.8 sq m

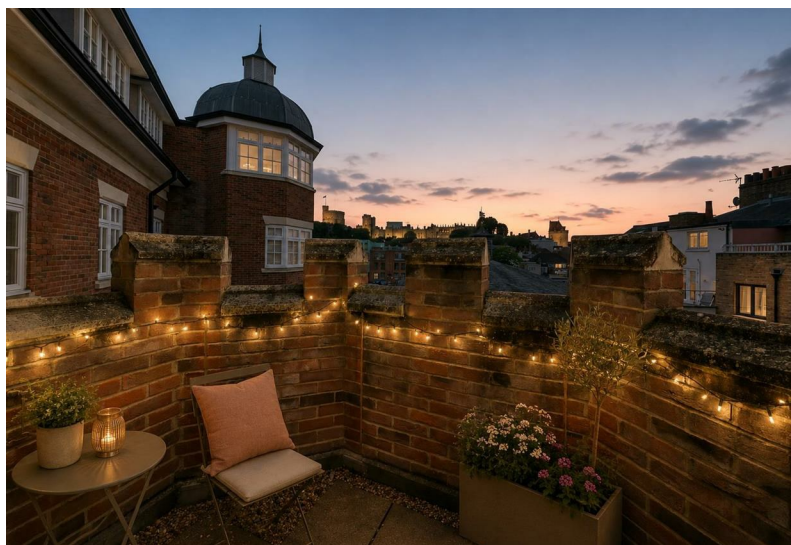
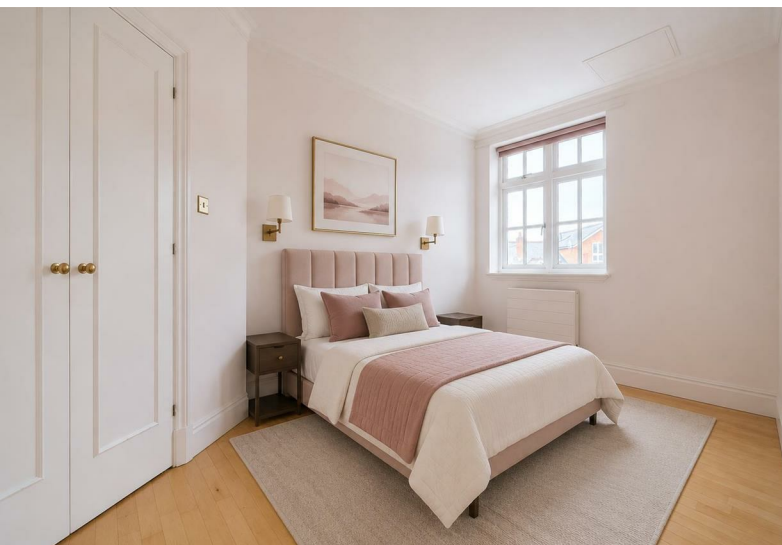
Approximate External Area = 1552 sq ft / 144.1 sq m

For identification only - Not to scale



Floor plan produced in accordance with RICS Property Measurement 2nd Edition, Incorporating International Property Measurement Standards (IPMS2 Residential). © nichecom 2026. Produced for Hardings. REF: 1471661





11 High Street, Windsor, Berkshire, SL4 1LD,
T: 01753 833 118 | E: info@hardings.co.uk
www.hardings.co.uk

