



HARDINGS



Duke Street
£1,850 PCM





Two bedroom Victorian cottage providing spacious accommodation in this popular residential location within walking distance of the town centre, stations and shops.

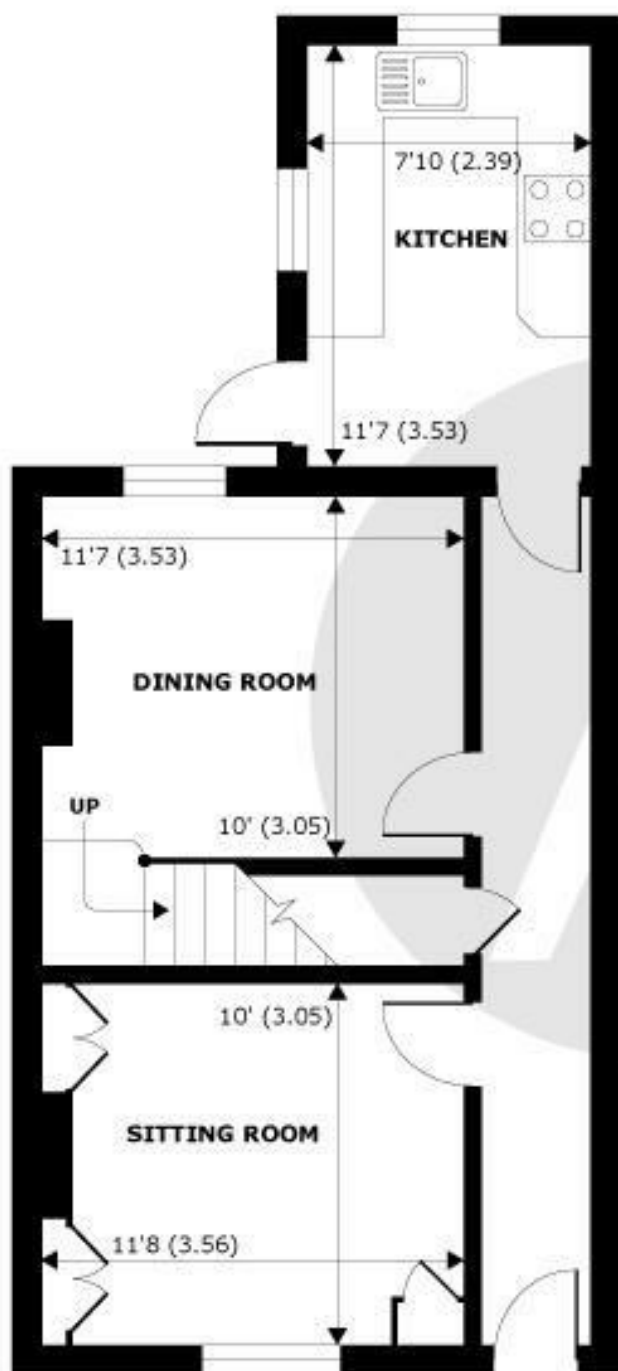
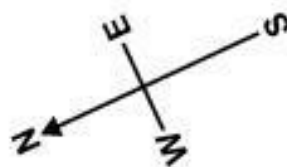
Available mid-february.

Energy Efficiency Rating		
	Current	Potential
Very energy efficient - lower running costs		
(92 plus) A		
(81-91) B		
(69-80) C		80
(55-68) D	60	
(39-54) E		
(21-38) F		
(1-20) G		
Not energy efficient - higher running costs		
England & Wales		EU Directive 2002/91/EC

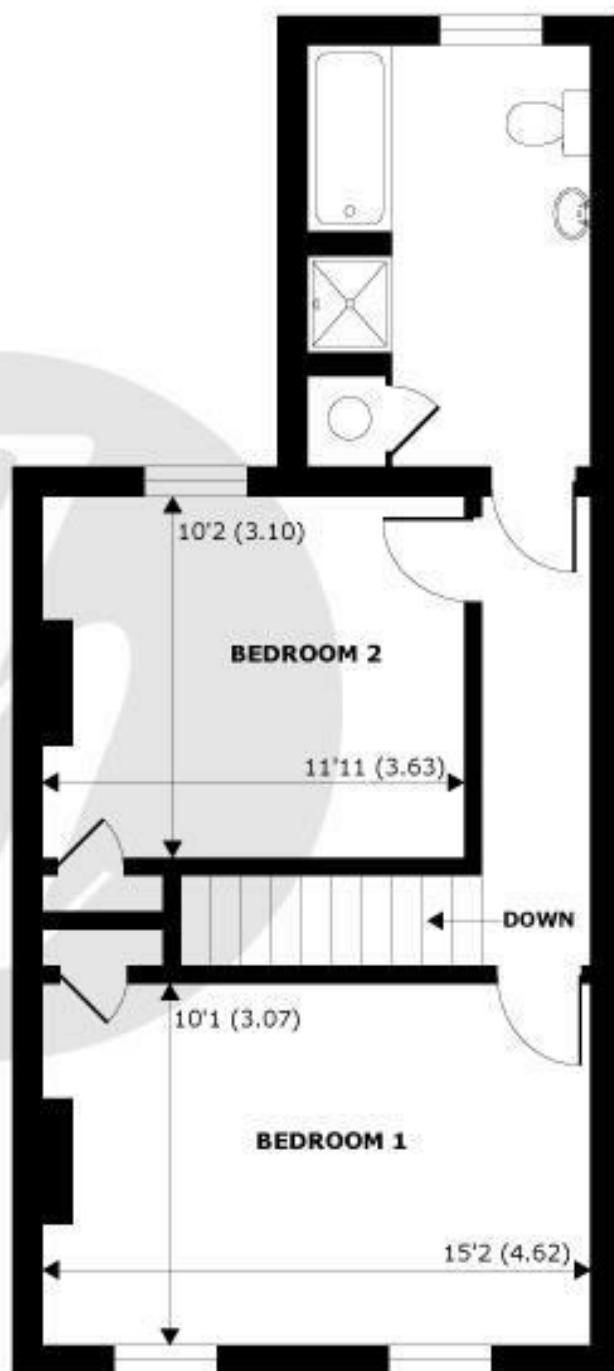
Features

- Two bedroom cottage
- Four-piece bathroom suite
- Permit parking available
- Private rear garden
- Unfurnished
- Central location
- Refurbished Kitchen
- Gas central heating
- Tax Band D & EPC D
- Available mid-february

NOT TO SCALE



GROUND FLOOR
abt 542 SQFT (50.4 SQMT)



FIRST FLOOR
abt 542 SQFT (50.4 SQMT)

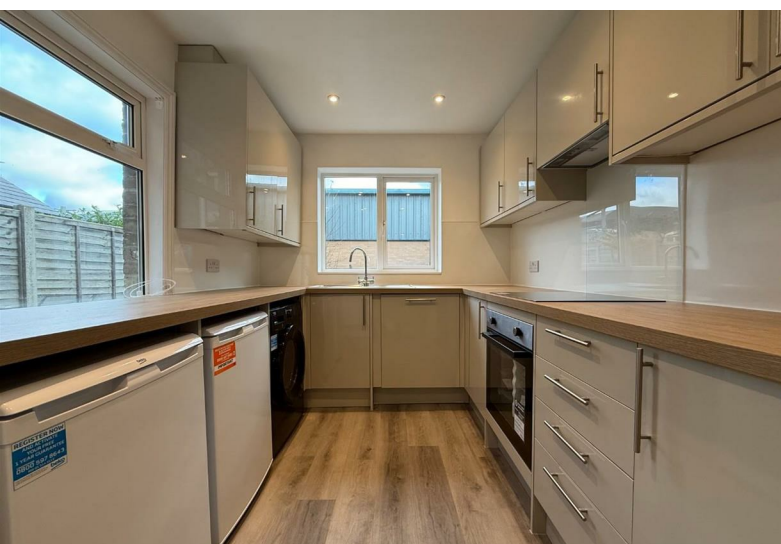
APPROX. GROSS EXTERNAL FLOOR AREA 1084 SQFT 100.7 SQM

Duke Street, Windsor, SL4



Whilst every attempt has been made to ensure the accuracy of the floor plan contained here, measurements of doors, windows and rooms are approximate and no responsibility is taken for any error, omission or misstatement. These plans are for representation purposes only as defined by RICS Code of Measuring Practice and should be used as such by any prospective purchaser. Specifically no guarantee is given on the total square footage of the property if quoted on this plan. Any figure given is for initial guidance only and should not be relied on as a basis of valuation.

Copyright nichecom.co.uk 2017 Produced for Hardings ref. 195574



11 High Street, Windsor, Berkshire, SL4 1LD,
T: 01753 833 118 | E: info@hardings.co.uk
www.hardings.co.uk

