



HARDINGS



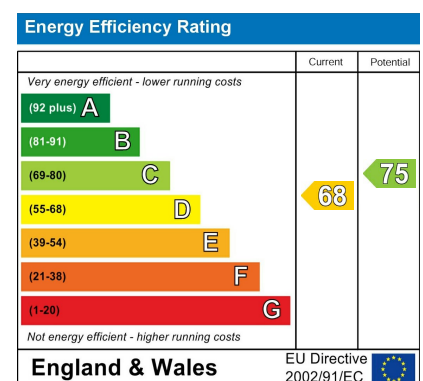
Athlone Square
Asking Price £300,000





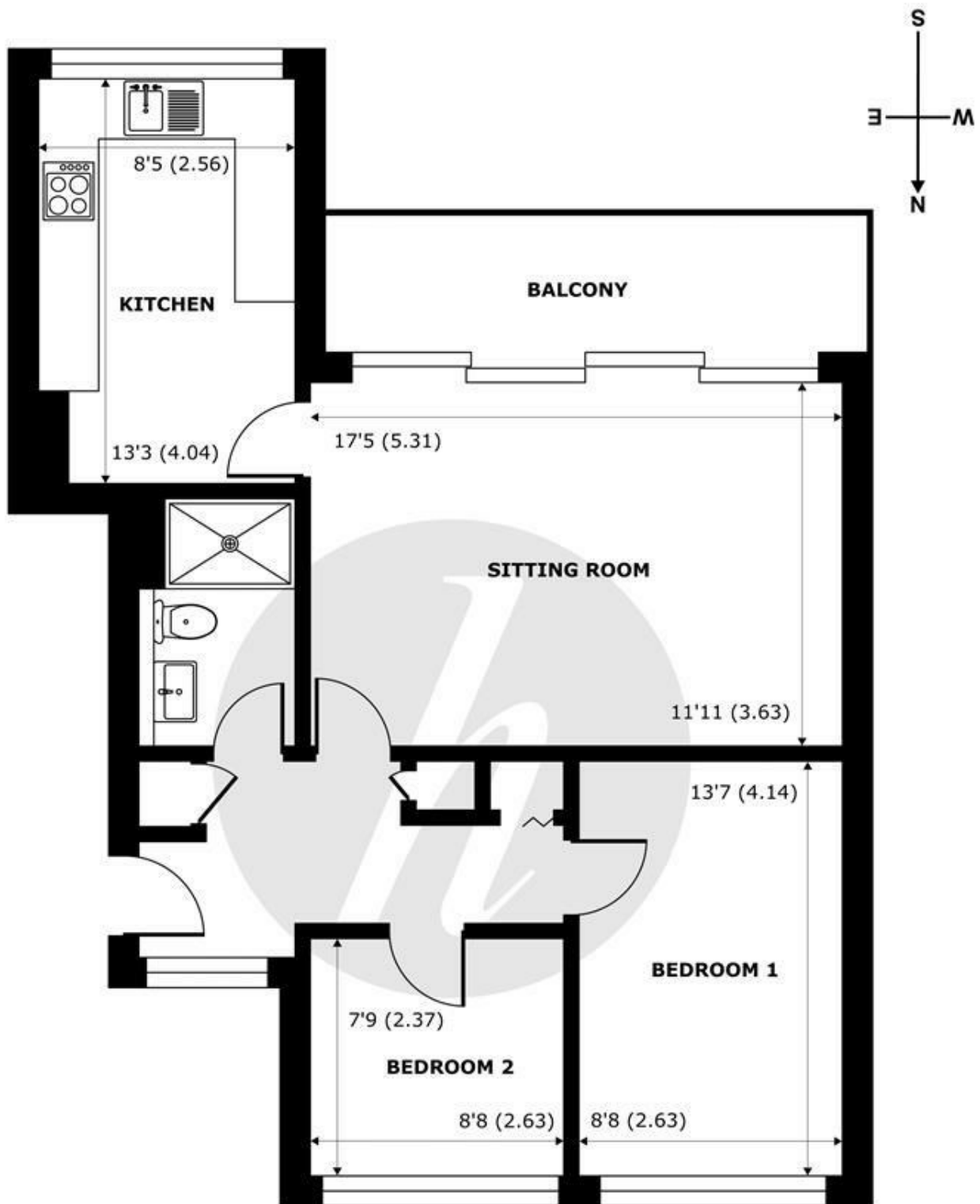
Situated within the popular Ward Royal development, just moments from Windsor town centre, this well-presented two-bedroom apartment offers spacious and convenient living. The property features a generous reception/dining room, providing a bright and versatile living space, with direct access to a south-facing balcony. The apartment is presented in good condition throughout and benefits from a modern shower room.

Further advantages include permit parking and a long lease, making the property an attractive option for both owner-occupiers and investors. Ward Royal is ideally positioned within easy reach of Windsor's shops, restaurants and mainline rail connections, offering excellent links into London.



Features

- Two Bedrooms
- Spacious Reception/ Diner
- Permit Parking
- Modern Shower Room
- South Facing Balcony
- Moments from Town Centre
- Good Condition Throughout
- Long Lease



THIRD FLOOR
abt 779 SQFT (72.3 SQMT)

Athlone Square, Windsor, SL4

Approximate Internal Area = 653 sq ft / 60.6 sq m

Approximate External Area = 779 sq ft / 72.3 sq m

For identification only - Not to scale



Floor plan produced in accordance with RICS Property Measurement 2nd Edition, Incorporating International Property Measurement Standards (IPMS2 Residential). © nichecom 2026. Produced for Hardings. REF: 1442558





11 High Street, Windsor, Berkshire, SL4 1LD,
T: 01753 833 118 | E: info@hardings.co.uk
www.hardings.co.uk

