



HARDINGS

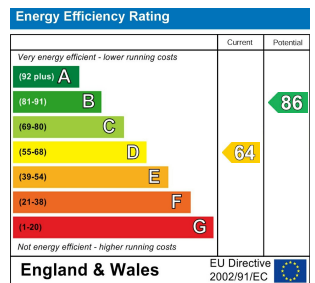


9 Stonebridge Field
Price Guide £575,000



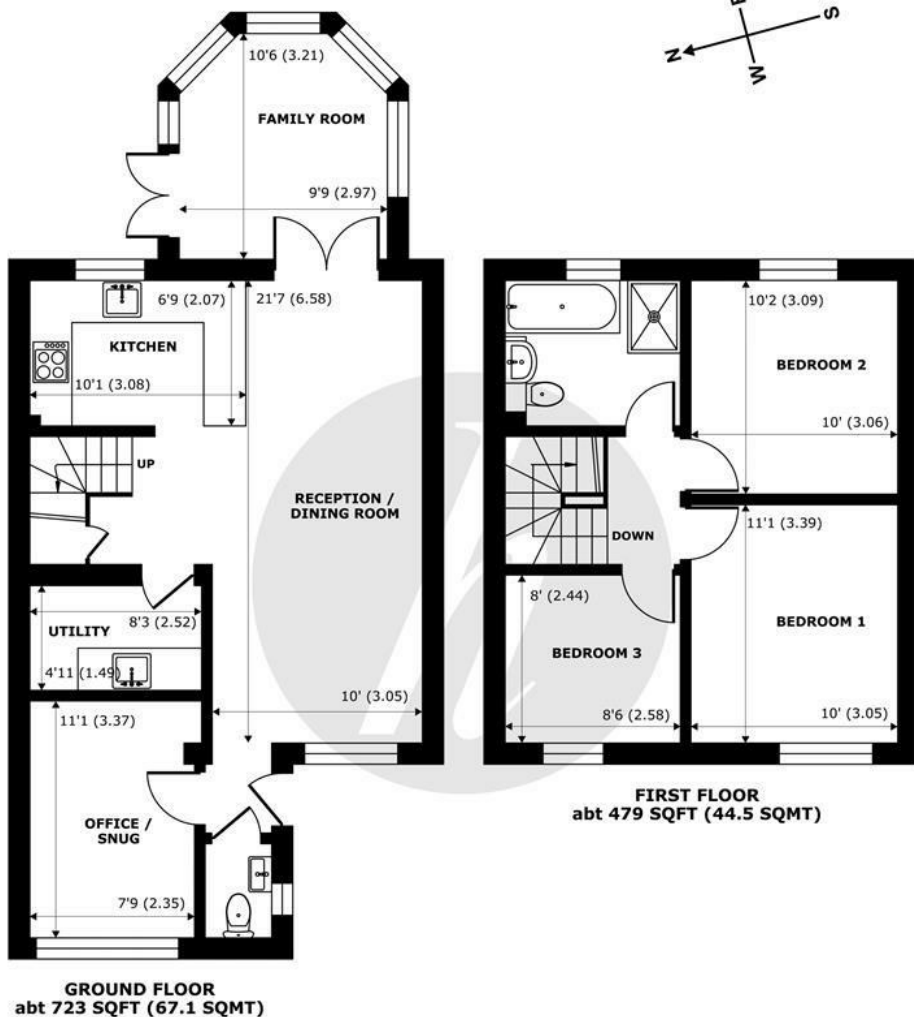


A beautifully presented 3/4 bedroom semi-detached house located in a quiet cul de sac with easy access to Eton High Street, Windsor, Slough and local transport routes. Furniture shown is CGI, added for illustrative purposes.



Features

- Three bedroom semi -detached house
- Refurbished throughout
- Study/Snug with 4th bedroom potential
- Conservatory
- Driveway parking
- Close to Eton High Street
- Modern Interior
- Utility Room
- Contemporary Family bathroom



Stonebridge Field, Eton, SL4

Approximate Internal Area = 1001 sq ft / 92.9 sq m

Approximate External Area = 1202 sq ft / 111.6 sq m

For identification only - Not to scale



Floor plan produced in accordance with RICS Property Measurement 2nd Edition, Incorporating International Property Measurement Standards (IPMS2 Residential), © nichicom 2026. Produced for Hardings. REF: 1446482





11 High Street, Windsor, Berkshire, SL4 1LD,
T: 01753 833 118 | E: info@hardings.co.uk
www.hardings.co.uk

