



HARDINGS

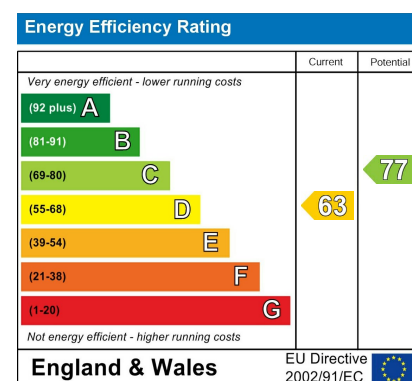


Albert Street
£2,395 PCM





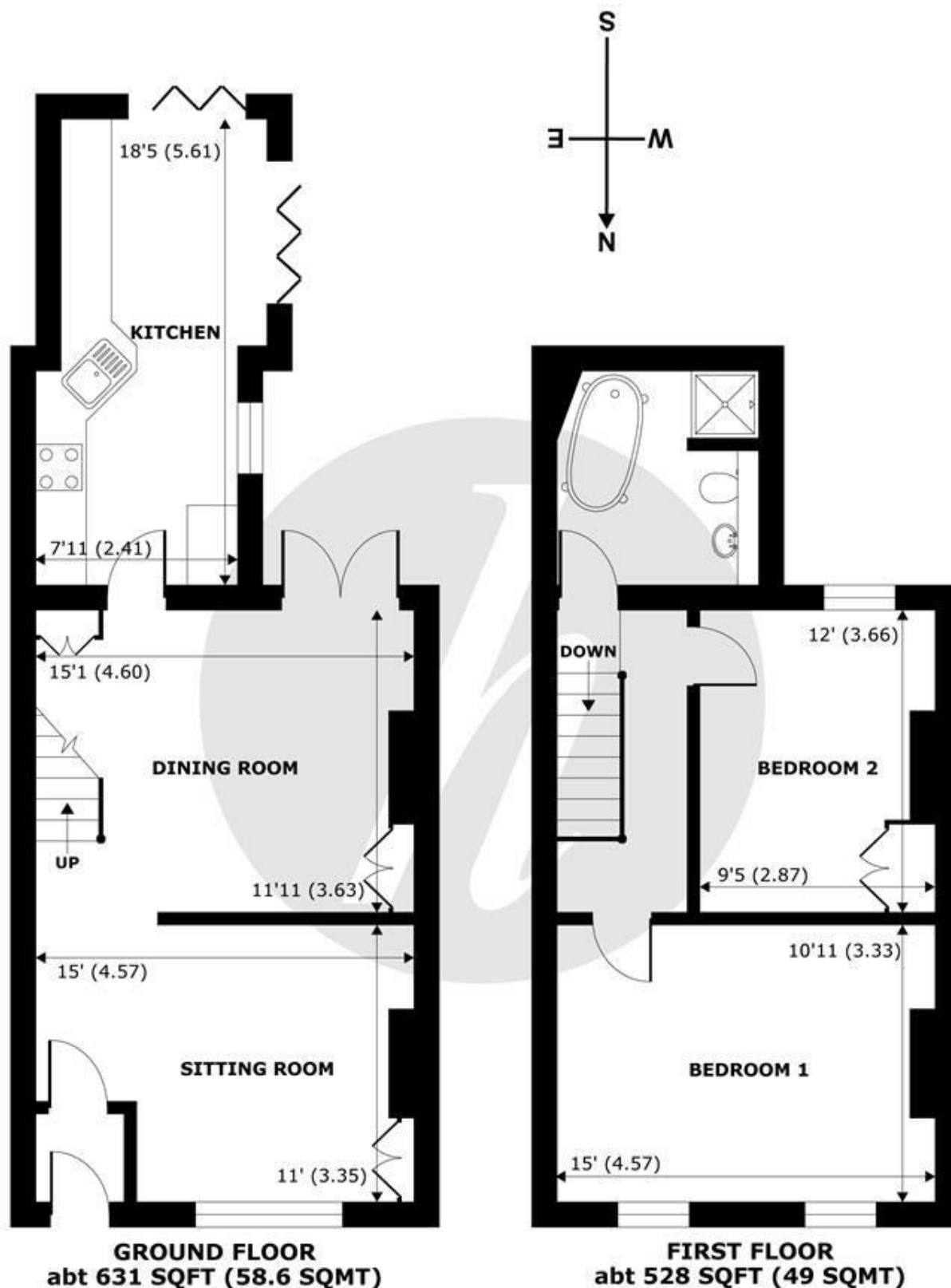
A contemporary Victorian terraced house finished to a high standard. Located in a sought after residential town centre road just a short walk from shops, restaurants and train stations.



Features

- Two bedroom house
- Two reception rooms
- Two double bedrooms
- South facing rear garden
- Unfurnished
- Modern throughout
- Dual aspect kitchen/breakfast room with bi-fold doors to the garden
- Contemporary, four-piece bathroom suite
- Permit parking available
- Tax band D & EPC D

NOT TO SCALE



APPROX. GROSS EXTERNAL FLOOR AREA 1159 SQFT 107.6 SQM

Albert Street, Windsor, SL4



Whilst every attempt has been made to ensure the accuracy of the floor plan contained here, measurements of doors, windows and rooms are approximate and no responsibility is taken for any error, omission or misstatement. These plans are for representation purposes only as defined by RICS Code of Measuring Practice and should be used as such by any prospective purchaser. Specifically no guarantee is given on the total square footage of the property if quoted on this plan. Any figure given is for initial guidance only and should not be relied on as a basis of valuation.

Copyright nichecom.co.uk 2016 Produced for Hardings ref. 76020



11 High Street, Windsor, Berkshire, SL4 1LD,
T: 01753 833 118 | E: info@hardings.co.uk
www.hardings.co.uk

