



HARDINGS

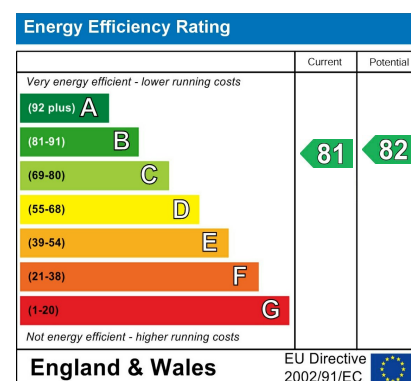


Hermitage Lane
£1,975 Per Calendar Month





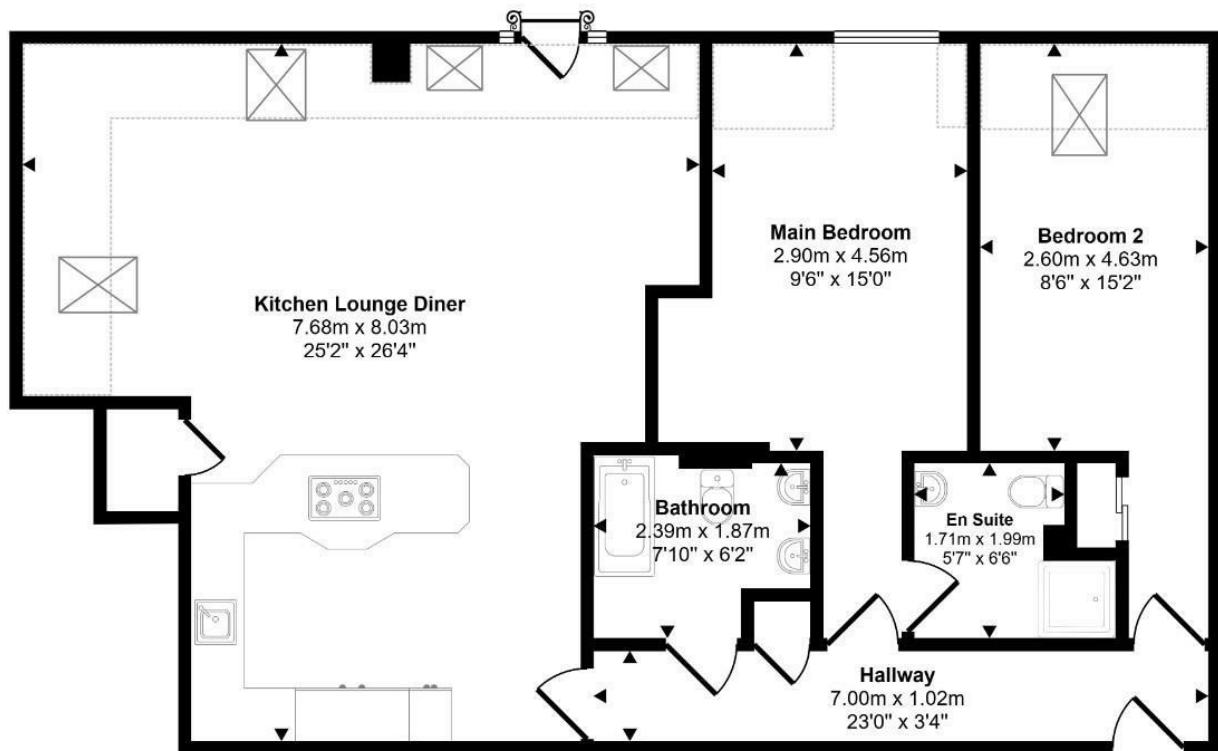
A beautifully presented two bedroom top floor apartment situated in a popular gated development in Windsor. Finished to a high specification throughout and offering direct access to Windsor Great Park this property comprises entrance hall, two double bedrooms (one with en-suite), large open-plan living room/kitchen and a main bathroom. Two allocated underground parking spaces. Lift access. Furnished. Council Tax Band E. EPC:B.




Features

- Two Double Bedrooms
- Lift Access
- Two Underground Allocated Parking Spaces
- EPC:B
- Two Bathrooms
- Furnished
- Council Tax Band E

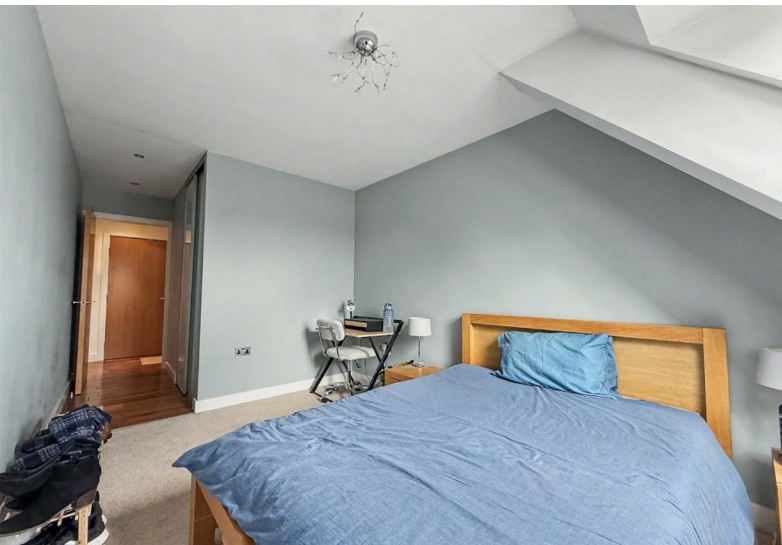
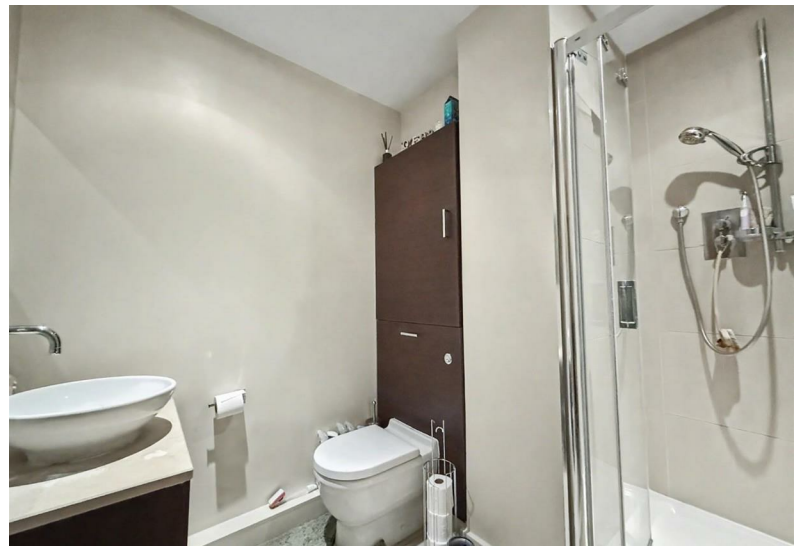
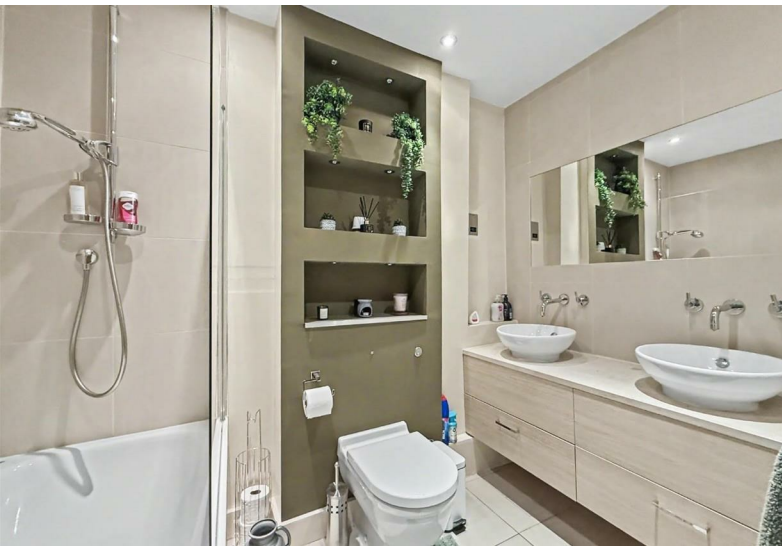
Approx Gross Internal Area
102 sq m / 1096 sq ft



Floorplan

 Denotes head height below 1.5m

This floorplan is only for illustrative purposes and is not to scale. Measurements of rooms, doors, windows, and any items are approximate and no responsibility is taken for any error, omission or mis-statement. Icons of items such as bathroom suites are representations only and may not look like the real items. Made with Made Snappy 360.



11 High Street, Windsor, Berkshire, SL4 1LD,
T: 01753 833 118 | E: info@hardings.co.uk
www.hardings.co.uk

