



HARDINGS




Springfield Road
£1,550 Per Month



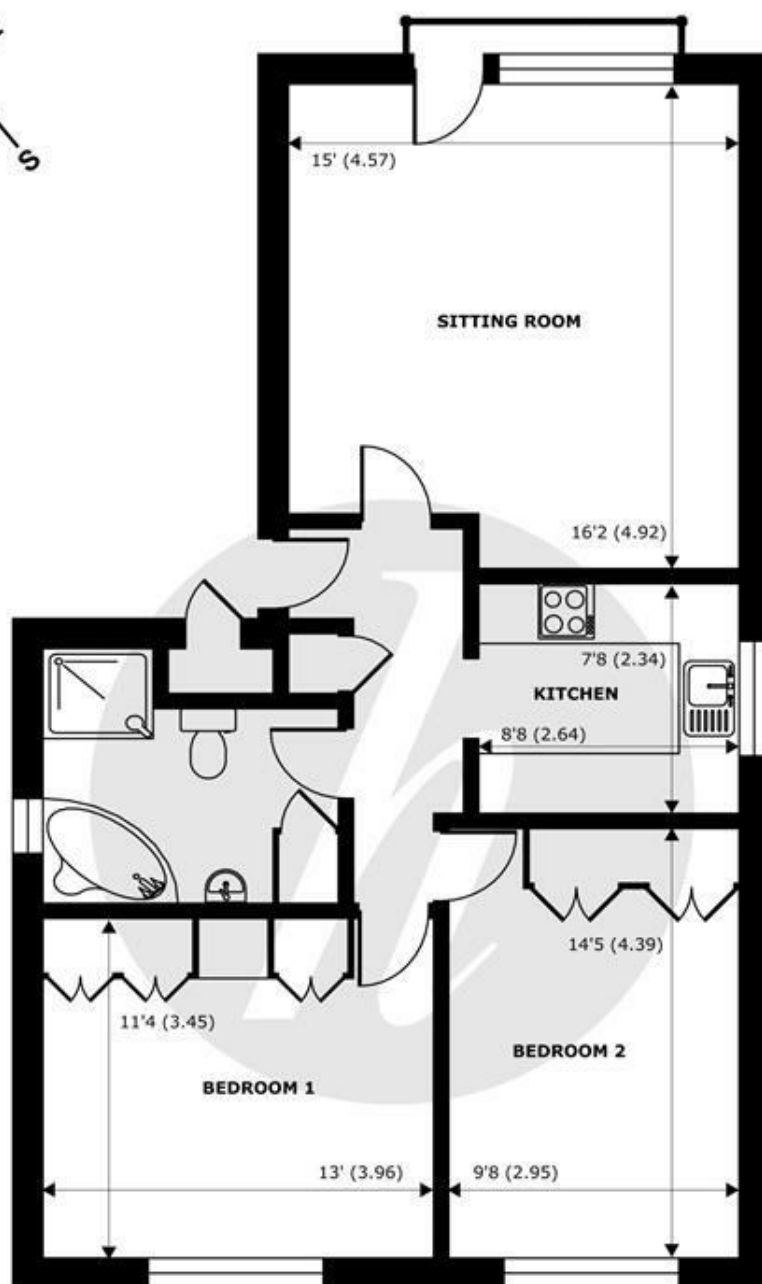
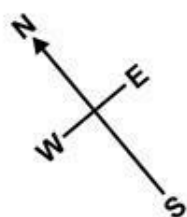


A two bedroom, first floor apartment in a convenient location. The property benefits from a four-piece bathroom suite and bright, spacious rooms. Offered furnished. Available beginning of August.

Energy Efficiency Rating		
	Current	Potential
Very energy efficient - lower running costs		
(92 plus) A		
(81-91) B		
(69-80) C		
(55-68) D	58	
(39-54) E		
(21-38) F		
(1-20) G		
Not energy efficient - higher running costs		
England & Wales	EU Directive 2002/91/EC 	

Features

- Two bedroom apartment
- Offered furnished
- Two double bedrooms
- Tax band C
- Separate Kitchen
- Close to Windsor town centre
- Four-piece bathroom suite
- Off street parking
- First floor
- Available beginning of August



FIRST FLOOR
abt 869 SQFT (80.7 SQMT)

Sycamore Court, Springfield Road, Windsor, SL4

Approximate Internal Area = 727 sq ft / 67.5 sq m

Approximate External Area = 869 sq ft / 80.7 sq m

For identification only - Not to scale



Floor plan produced in accordance with RICS Property Measurement Standards incorporating International Property Measurement Standards (IPMS2 Residential). © nichecom 2024. Produced for Hardings. REF: 1107694.





11 High Street, Windsor, Berkshire, SL4 1LD,
T: 01753 833 118 | E: info@hardings.co.uk
www.hardings.co.uk

