



# HARDINGS



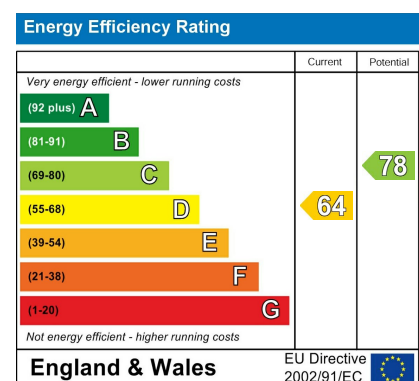
Maidenhead Road  
Price Guide £825,000





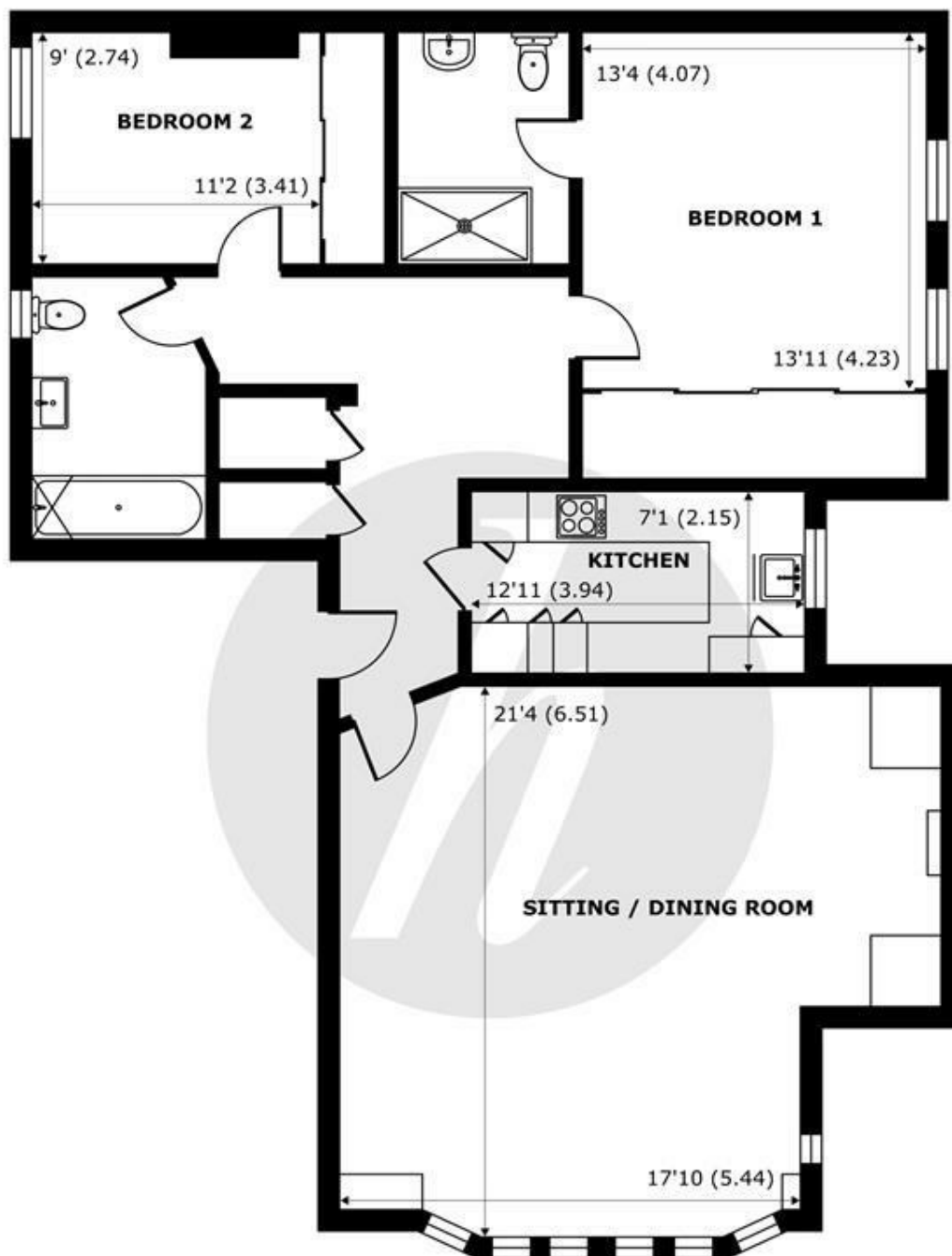


A spacious and light two bedroom, 2 bathroom ground floor conversion flat forming part of this stunning historic manor house, set in gated extensive grounds. Refurbished by the current owners, this stunning property benefits from a wealth of period features, wonderfully high ceilings, garage and private garden. Just 5 minutes' drive from Windsor, the town centre offers a wonderful array of shops, restaurants, cafes, bars and 3 direct British Rail links to London (Waterloo, Paddington & The Elizabeth Line). Windsor is easily accessible via the major motorway networks of the M3, M4, M25 and M40 and London Heathrow is just 12 miles.



## Features

- Stunning Grade II Listed Conversion Flat
- Private Garden, Set in Extensive Gated Communal Grounds Leading to the Banks of the River with Shared Mooring Thames
- Beautiful Period Features & Wonderfully High Ceilings
- Driveway Parking
- 30 Minutes to Heathrow
- Two Bedrooms, Two Bathrooms
- 17' Dining/Reception Rooms with Bay Window
- Garage
- Share Of Freehold
- 5 Minute Drive to Windsor Town Centre and Direct Rail Links to London (Paddington, Waterloo & The Elizabeth Line)



**GROUND FLOOR**  
abt 1359 SQFT (126.2 SQMT)

## Sutherland Grange, Maidenhead Road, Windsor, SL4

Approximate Internal Area = 1218 sq ft / 113.1 sq m

Approximate External Area = 1359 sq ft / 126.2 sq m

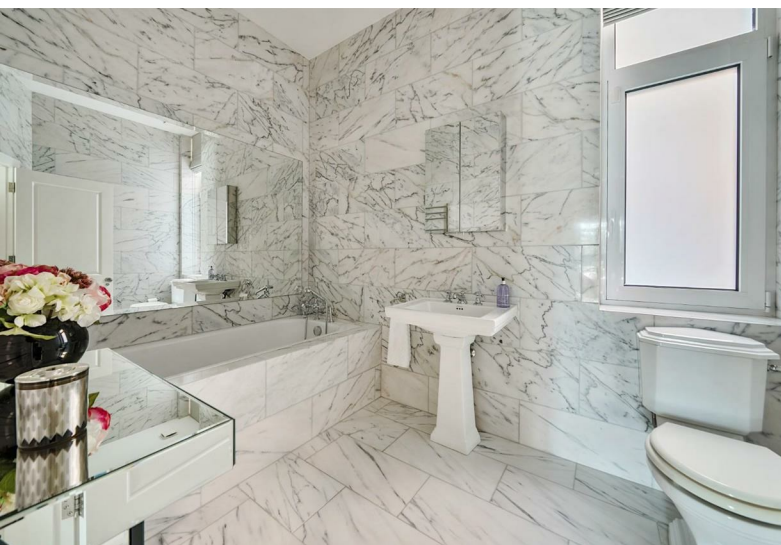
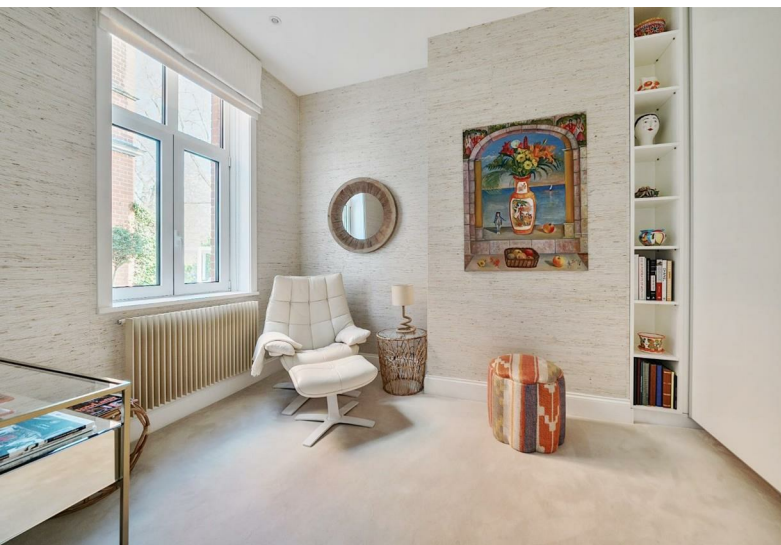
For identification only - Not to scale



Floor plan produced in accordance with RICS Property Measurement 2nd Edition,  
Incorporating International Property Measurement Standards (IPMS2 Residential). © nitchecom 2025.  
Produced for Hardings. REF: 1264479







11 High Street, Windsor, Berkshire, SL4 1LD,  
T: 01753 833 118 | E: [info@hardings.co.uk](mailto:info@hardings.co.uk)  
[www.hardings.co.uk](http://www.hardings.co.uk)

