



# HARDINGS

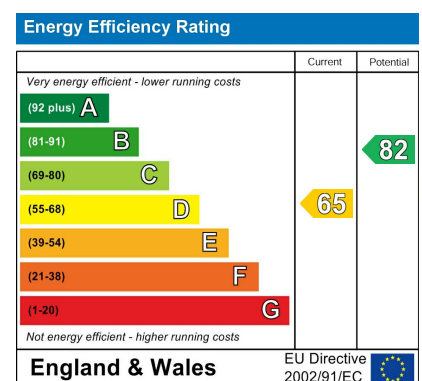


Victoria Road  
£2,200 Per Month





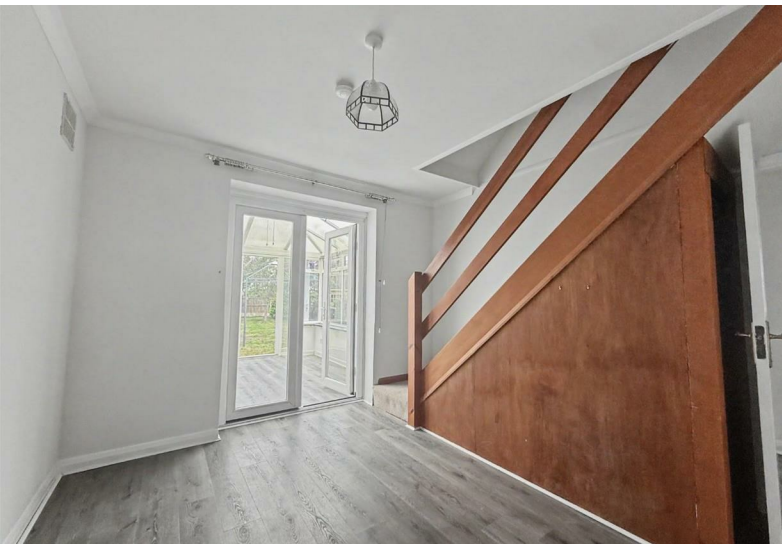
A well presented, spacious two bedroom bungalow situated in popular Eton Wick. The property comprises entrance hall, two reception rooms, kitchen, two double bedrooms (one with en-suite cloakroom) and bathroom. Pretty rear garden and patio. Driveway. Unfurnished. EPC:D. Council Tax Band E.



## Features

- Spacious Two Bedroom Bungalow
- Delightful Garden with Patio
- Council Tax Band E
- Private Driveway Parking
- Unfurnished
- EPC:D





11 High Street, Windsor, Berkshire, SL4 1LD,  
T: 01753 833 118 | E: [info@hardings.co.uk](mailto:info@hardings.co.uk)  
[www.hardings.co.uk](http://www.hardings.co.uk)

