



HARDINGS




Dedworth Road
Asking Price £275,000



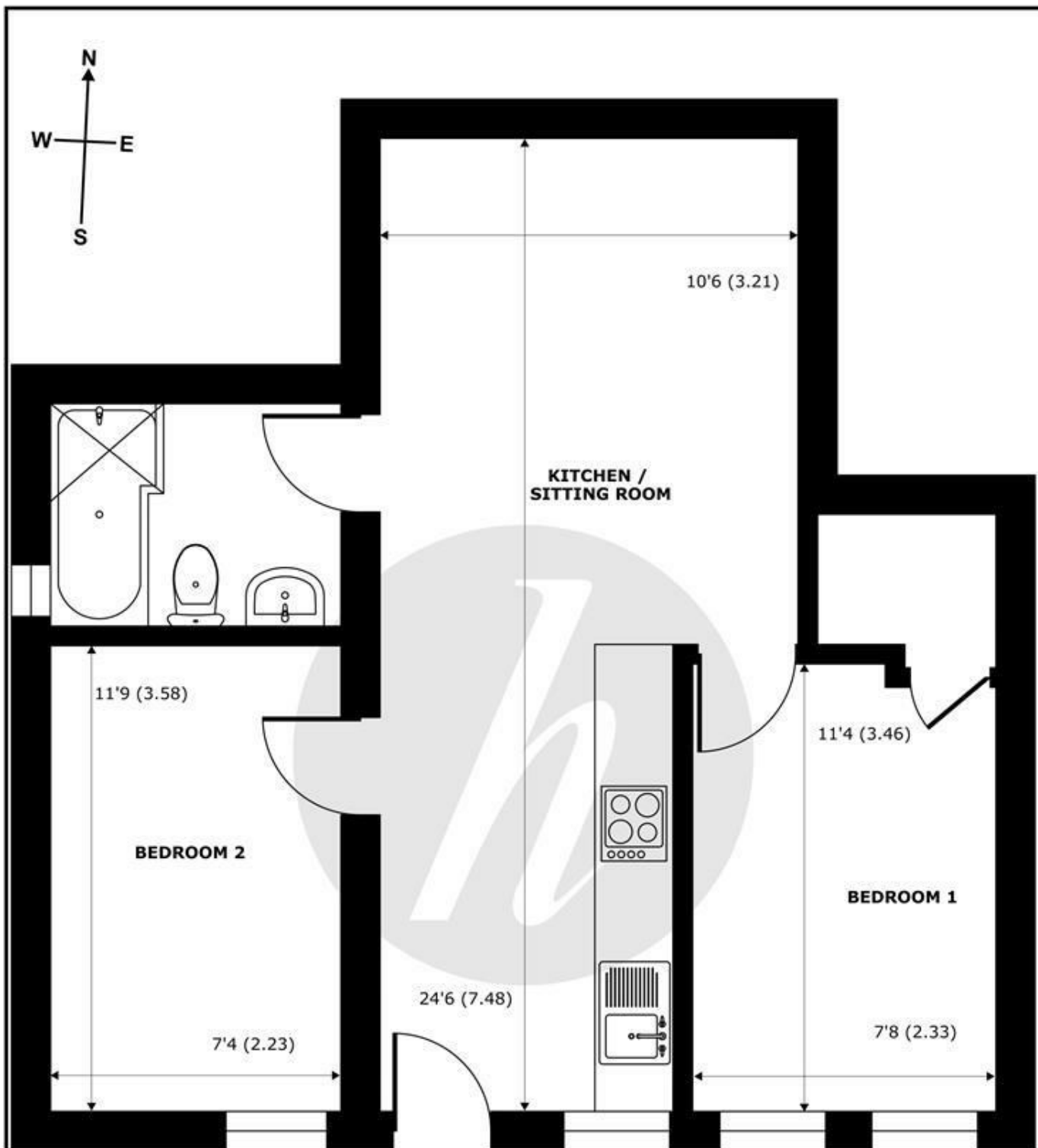


A modern 2 bedroom ground floor maisonette conveniently situated within close proximity to local shops, amenities and within a mile to Windsor town centre. It further provides an open plan lateral living with its own direct access. Offered with no onward chain.

Energy Efficiency Rating		
	Current	Potential
<i>Very energy efficient - lower running costs</i>		
(92 plus) A		
(81-91) B		
(69-80) C	70	70
(55-68) D		
(39-54) E		
(21-38) F		
(1-20) G		
<i>Not energy efficient - higher running costs</i>		
England & Wales	EU Directive 2002/91/EC 	

Features

- Ground Floor Maisonette Apartment
- 2 Double Bedrooms
- Contemporary Exterior
- Close to Local Amenities
- No Chain
- Recently Built
- Open plan Kitchen/Livingroom
- Modern Bathrooms
- One mile to Windsor Town Centre
- Leasehold



GROUND FLOOR
 abt 581 SQFT (53.9 SQMT)

Dedworth Road, Windsor, SL4

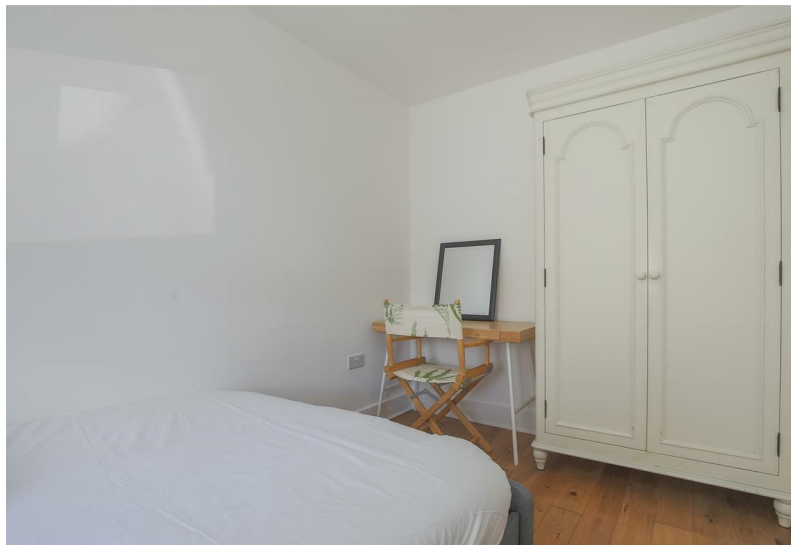
Approximate Internal Area = 482 sq ft / 44.7 sq m
 Approximate External Area = 581 sq ft / 53.9 sq m

For identification only - Not to scale



Floor plan produced in accordance with RICS Property Measurement 2nd Edition, Incorporating International Property Measurement Standards (IPMS2 Residential). © nichecom 2026. Produced for Hardings. REF: 1463747





11 High Street, Windsor, Berkshire, SL4 1LD,
T: 01753 833 118 | E: info@hardings.co.uk
www.hardings.co.uk

