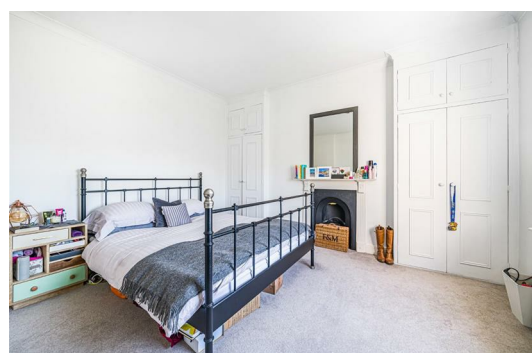
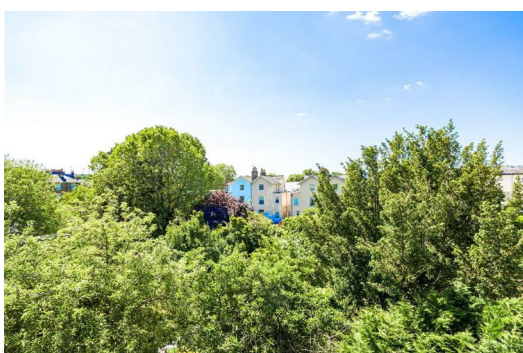




HARDINGS



23 Trinity Place
Asking Price £365,000






This elegant and beautifully appointed period conversion occupies the top floor of a sought-after townhouse in one of Windsor's most prestigious roads, just moments from the Town Centre with its excellent shopping, restaurants, bars, and mainline rail connections to London.

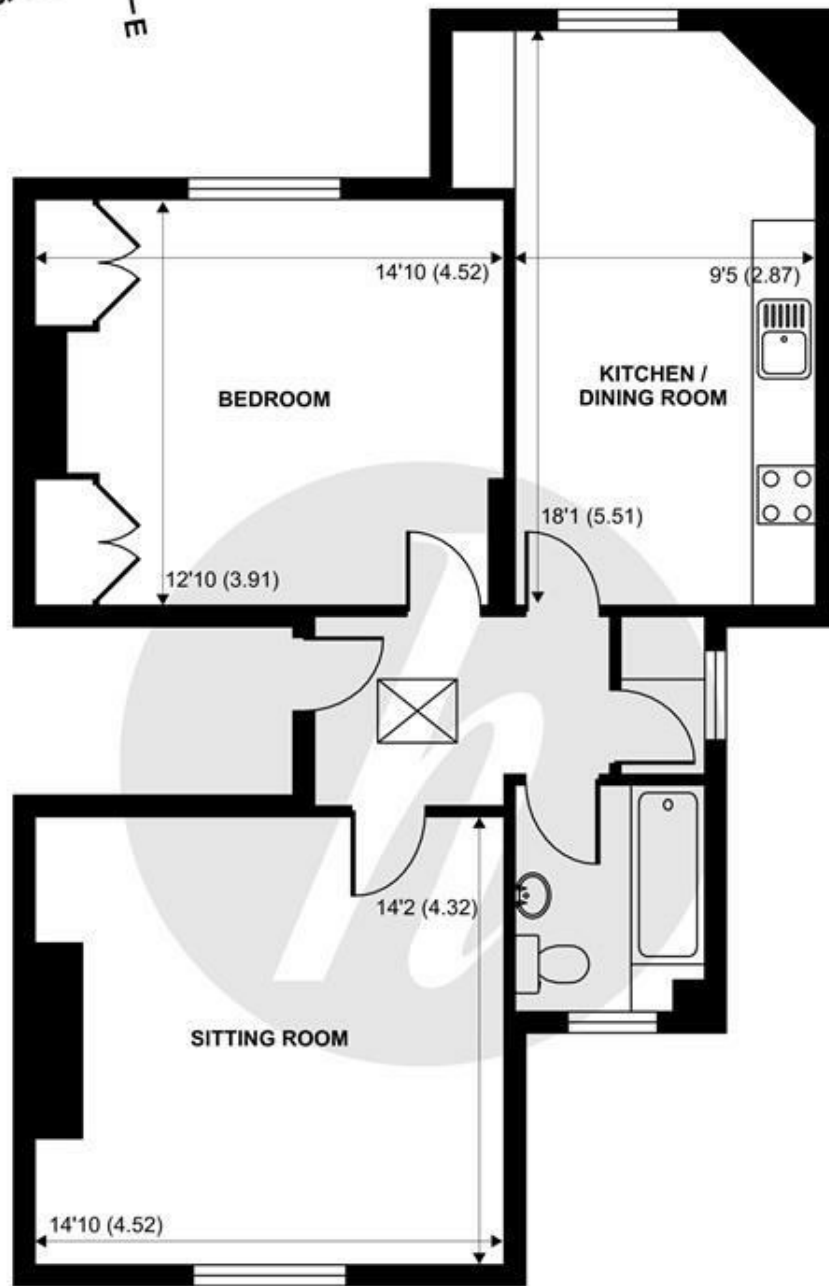
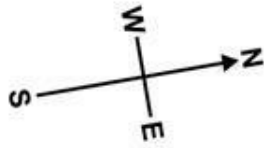
The accommodation showcases period features throughout, including high ceilings, ornate cornicing, classic sash windows, and several original Victorian fireplaces. The large double bedroom benefits from floor-to-ceiling wardrobes.

There is no onward chain and comes with a share of freehold.

Energy Efficiency Rating		
	Current	Potential
Very energy efficient - lower running costs		
(92 plus) A		
(81-91) B		
(69-80) C		78
(55-68) D	66	
(39-54) E		
(21-38) F		
(1-20) G		
Not energy efficient - higher running costs		
England & Wales	EU Directive 2002/91/EC 	

Features

- One bedroom apartment
- Town Centre Location
- Built in Storage
- Permit Parking
- Tax Band D & EPC D
- Eat-in Kitchen
- Abundance of Period Features
- Separate Utility Room
- Moments from Windsor Town Centre
- No Onward Chain



GROUND FLOOR
abt 808 SQFT (75.1 SQMT)

Trinity Place, Windsor, SL4

Approximate Internal Area = 709 sq ft / 65.9 sq m

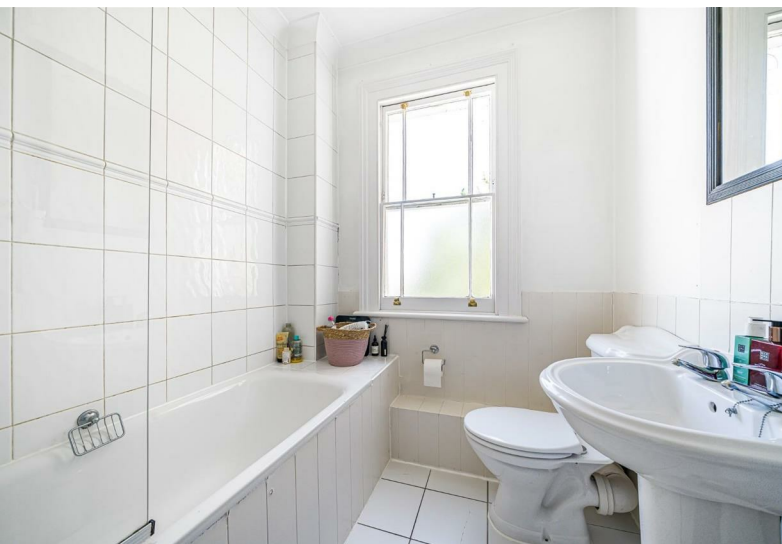
For identification only - Not to scale



Floor plan produced in accordance with RICS Property Measurement 2nd Edition,
Incorporating International Property Measurement Standards (IPMS2 Residential). © nichecom 2025.
Produced for Hardings. REF: 1336323



HARDINGS



11 High Street, Windsor, Berkshire, SL4 1LD,
T: 01753 833 118 | E: info@hardings.co.uk
www.hardings.co.uk

