



# HARDINGS

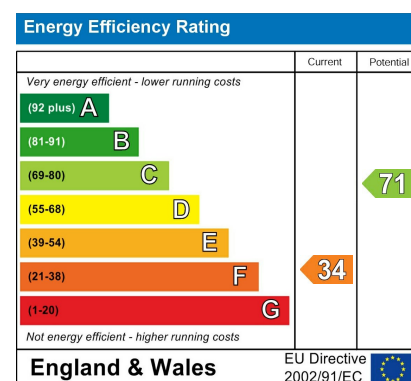


Edinburgh Gardens  
Offers Over £500,000





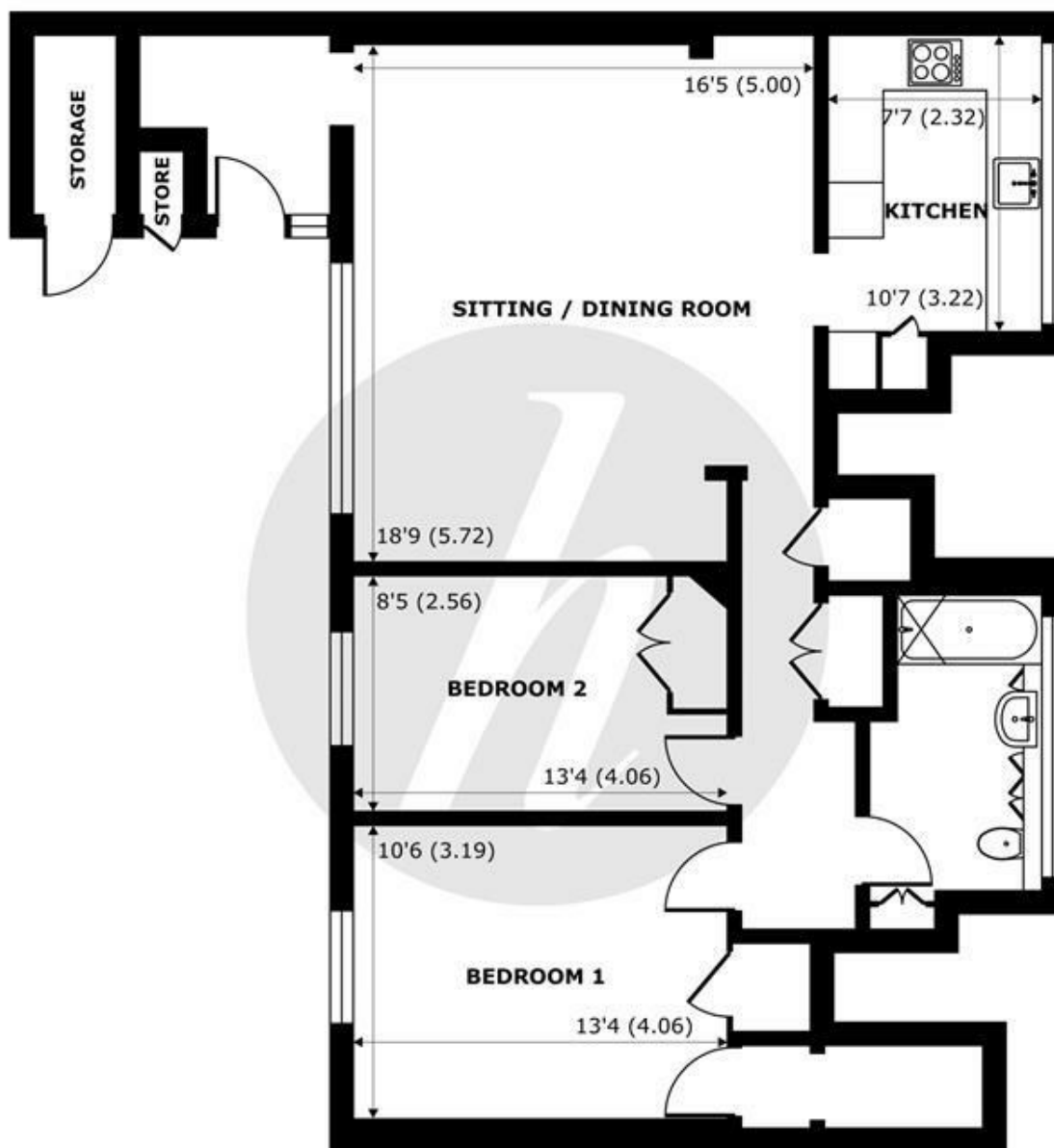
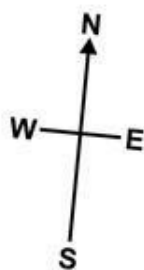
Superbly located in Windsors' Golden Triangle, Edinburgh Gardens sits just off Kings Road within a gated development moments from the picturesque Long Walk. There are well-maintained communal gardens providing permit-controlled resident and visitor parking and this property has the added benefit of a garage. Additionally, the property includes a paved courtyard garden with two external storage cupboards. The accommodation comprises two well-proportioned bright and spacious double bedrooms, in addition to a modern integrated kitchen, a large and bright reception diner and a contemporary family bathroom. There is no onward chain



## Features

- Ground Floor Maisonette
- Two Double Bedrooms
- Vast Storage Throughout
- Enclosed Front Garden
- Private Gated Development
- Separate Modern Integrated Kitchen
- Spacious Reception Dining Room
- Garage & Residents Parking
- No Onward Chain
- Share of Freehold





**GROUND FLOOR**  
abt 1035 SQFT (100 SQMT)

## Edinburgh Gardens, Windsor, SL4

Approximate Internal Area = 904 sq ft / 83.9 sq m (Exclude Store / Storage)

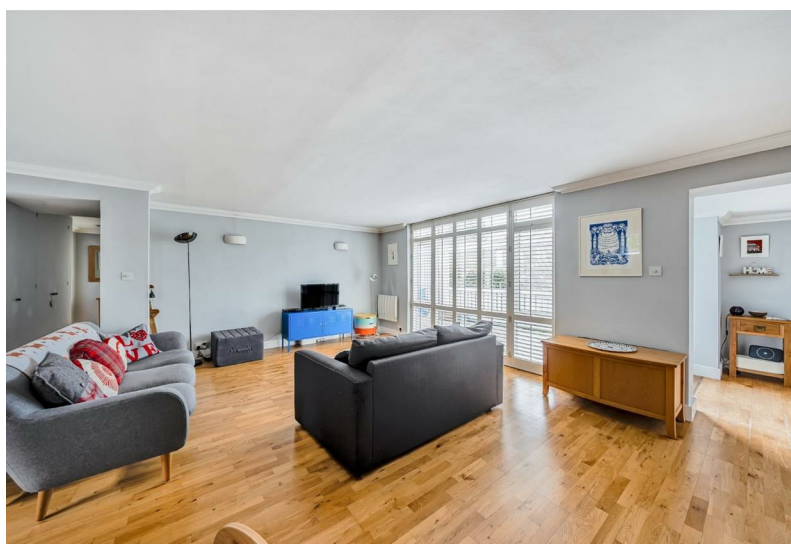
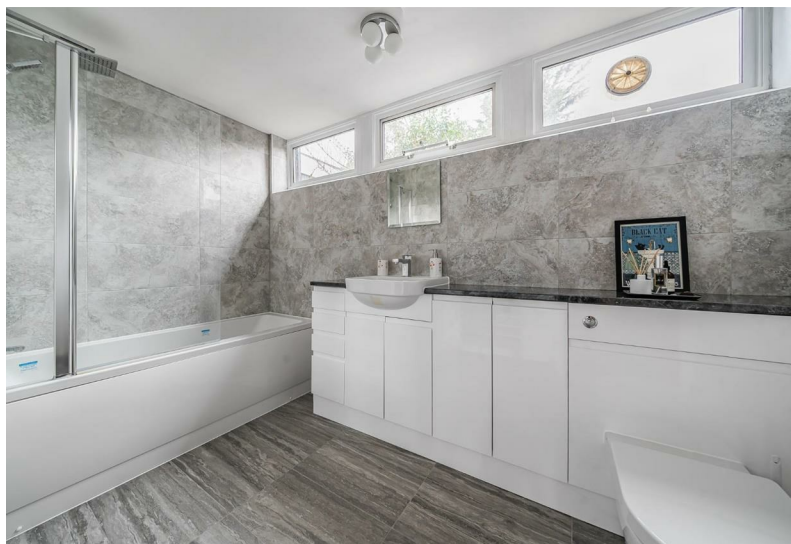
Approximate External Area = 1035 sq ft / 96.1 sq m (Exclude Store / Storage)

For identification only - Not to scale



Floor plan produced in accordance with RICS Property Measurement 2nd Edition,  
Incorporating International Property Measurement Standards (IPMS2 Residential). © nichecom 2025.  
Produced for Hardings. REF: 1251913





11 High Street, Windsor, Berkshire, SL4 1LD,  
T: 01753 833 118 | E: [info@hardings.co.uk](mailto:info@hardings.co.uk)  
[www.hardings.co.uk](http://www.hardings.co.uk)

