



**HARDINGS**



Clewer Park  
Guide Price £700,000






Situated within the sought-after Clewer Park, this well-proportioned, three-bedroom semi-detached home offers spacious and practical accommodation, ideal for family living.

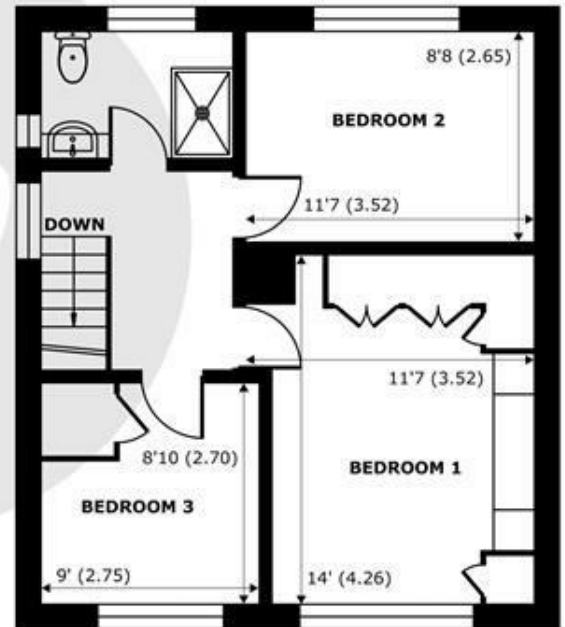
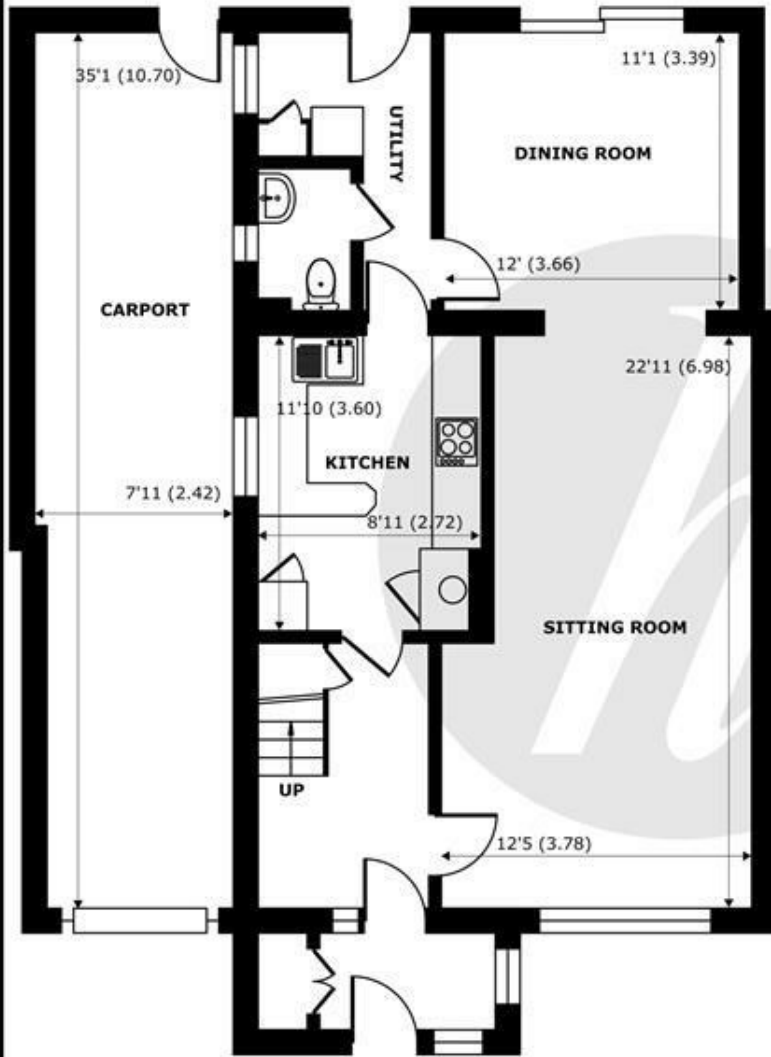
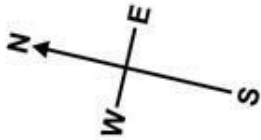
The property features a double reception room & dining area with views over the attractive & well maintained private garden, a separate kitchen, as well as a carport and off-street parking.

There is also excellent potential to extend (STPP), allowing buyers to further enhance and personalise the property to suit their needs. Ideally located within a quiet residential area, the property is just a short walk from mainline rail links into London (Paddington & Waterloo), as well as local amenities and schools.

Energy Efficiency Rating		
	Current	Potential
<i>Very energy efficient - lower running costs</i>		
(92 plus) <b>A</b>		
(81-91) <b>B</b>		
(69-80) <b>C</b>	76	79
(55-68) <b>D</b>		
(39-54) <b>E</b>		
(21-38) <b>F</b>		
(1-20) <b>G</b>		
<i>Not energy efficient - higher running costs</i>		
<b>England &amp; Wales</b>	EU Directive 2002/91/EC 	

## Features

- Three Bedrooms
- Off Street Parking
- Quiet Residential Area
- Garage/ Car Port
- Downstairs Cloakroom
- Semi-Detached Home
- Potential to Extend ( STPP)
- Attractive Pretty Garden
- Short Walk to Mainline Rail Links to London (Paddington & Waterloo)
- Double Reception Room



## Clewer Park, Windsor, SL4

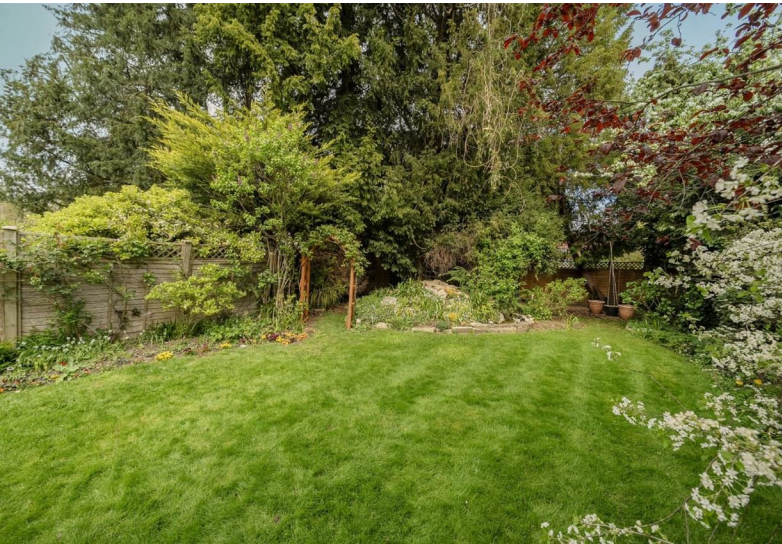
Approximate Internal Area = 1182 sq ft / 109.8 sq m  
Approximate External Area = 1390 sq ft / 129.1 sq m

For identification only - Not to scale



Floor plan produced in accordance with RICS Property Measurement 2nd Edition, Incorporating International Property Measurement Standards (IPMS2 Residential). © nichecom 2026. Produced for Hardings. REF: 1441574





11 High Street, Windsor, Berkshire, SL4 1LD,  
T: 01753 833 118 | E: [info@hardings.co.uk](mailto:info@hardings.co.uk)  
[www.hardings.co.uk](http://www.hardings.co.uk)

