



HARDINGS




Oxford Road
Asking Price £770,000



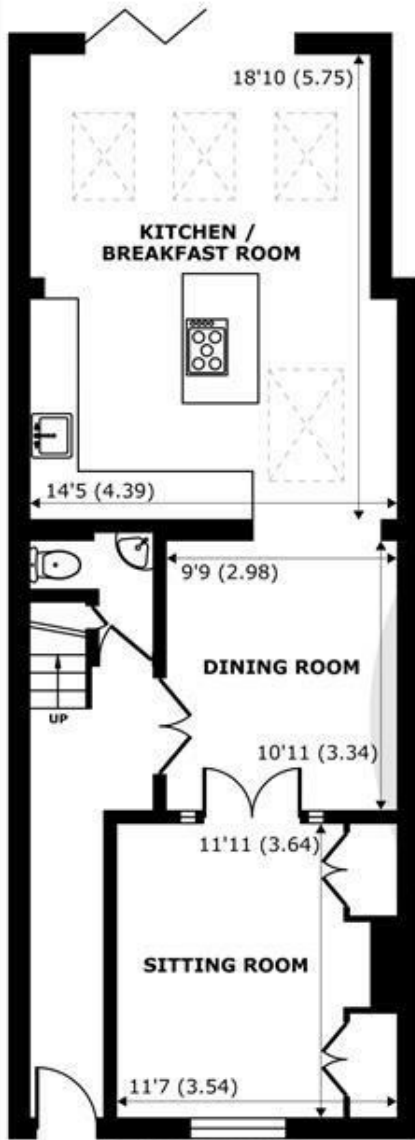


A beautifully presented and charming Victorian three-bedroom terraced home, ideally located just a short distance from Windsor Town Centre. The property boasts a spacious eat-in family kitchen with bi-fold doors that open onto a private garden. In addition, there are two further reception rooms on the ground floor, offering ample living space. Conveniently situated near excellent schools, nurseries, and Windsor & Eton Train Station.

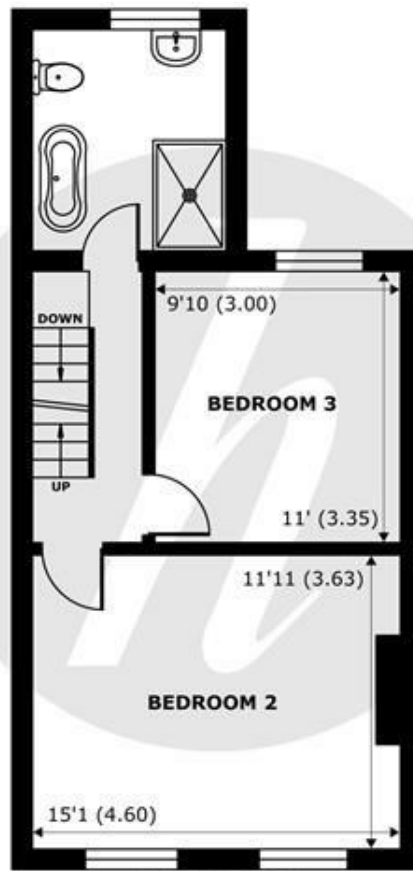
Energy Efficiency Rating		Current	Potential
<i>Very energy efficient - lower running costs</i>			
(92 plus) A			
(81-91) B			87
(69-80) C		77	
(55-68) D			
(39-54) E			
(21-38) F			
(1-20) G			
<i>Not energy efficient - higher running costs</i>			
England & Wales		EU Directive 2002/91/EC 	

Features

- Three Double Bedrooms
- Two further Reception Rooms
- Private Garden
- Quiet Residential Road
- Shaker Style Eat in Kitchen with Built in Appliances
- Family Bathroom & Ensuite Shower Room
- Downstairs Cloakroom
- Moments from Windsor Town Centre



GROUND FLOOR
abt 729 SQFT (67.7 SQMT)



FIRST FLOOR
abt 507 SQFT (47.1 SQMT)



SECOND FLOOR
abt 389 SQFT (36.1 SQMT)

Denotes restricted head height

Oxford Road, Windsor, SL4

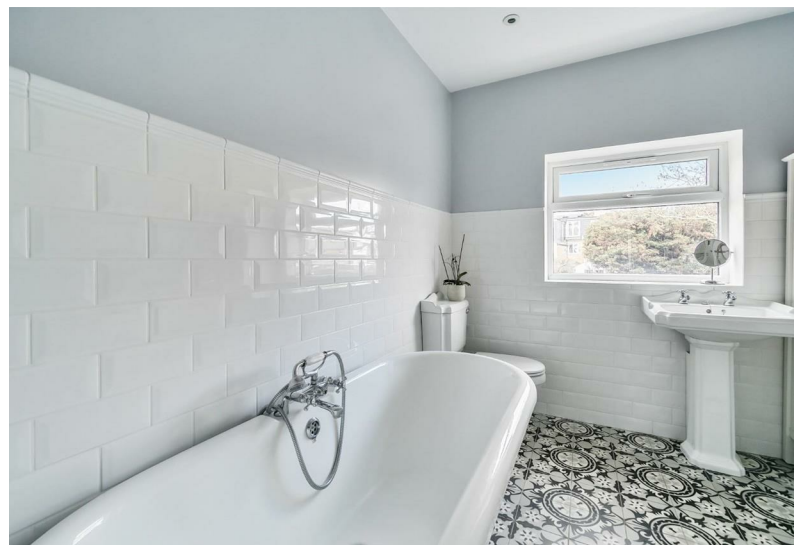
Approximate Internal Area = 1343 sq ft / 124.7 sq m
 Approximate External Area = 1625 sq ft / 150.9 sq m
 Limited Use Area(s) = 31 sq ft / 2.8 sq m

For identification only - Not to scale



Floor plan produced in accordance with RICS Property Measurement 2nd Edition, Incorporating International Property Measurement Standards (IPMS2 Residential). © nichecom 2025. Produced for Hardings. REF: 1237261





11 High Street, Windsor, Berkshire, SL4 1LD,
T: 01753 833 118 | E: info@hardings.co.uk
www.hardings.co.uk

