



HARDINGS

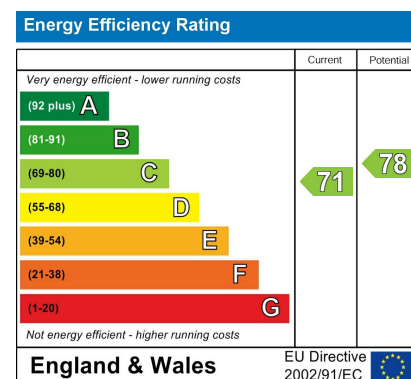


Nightingale Walk
Offers Over £400,000



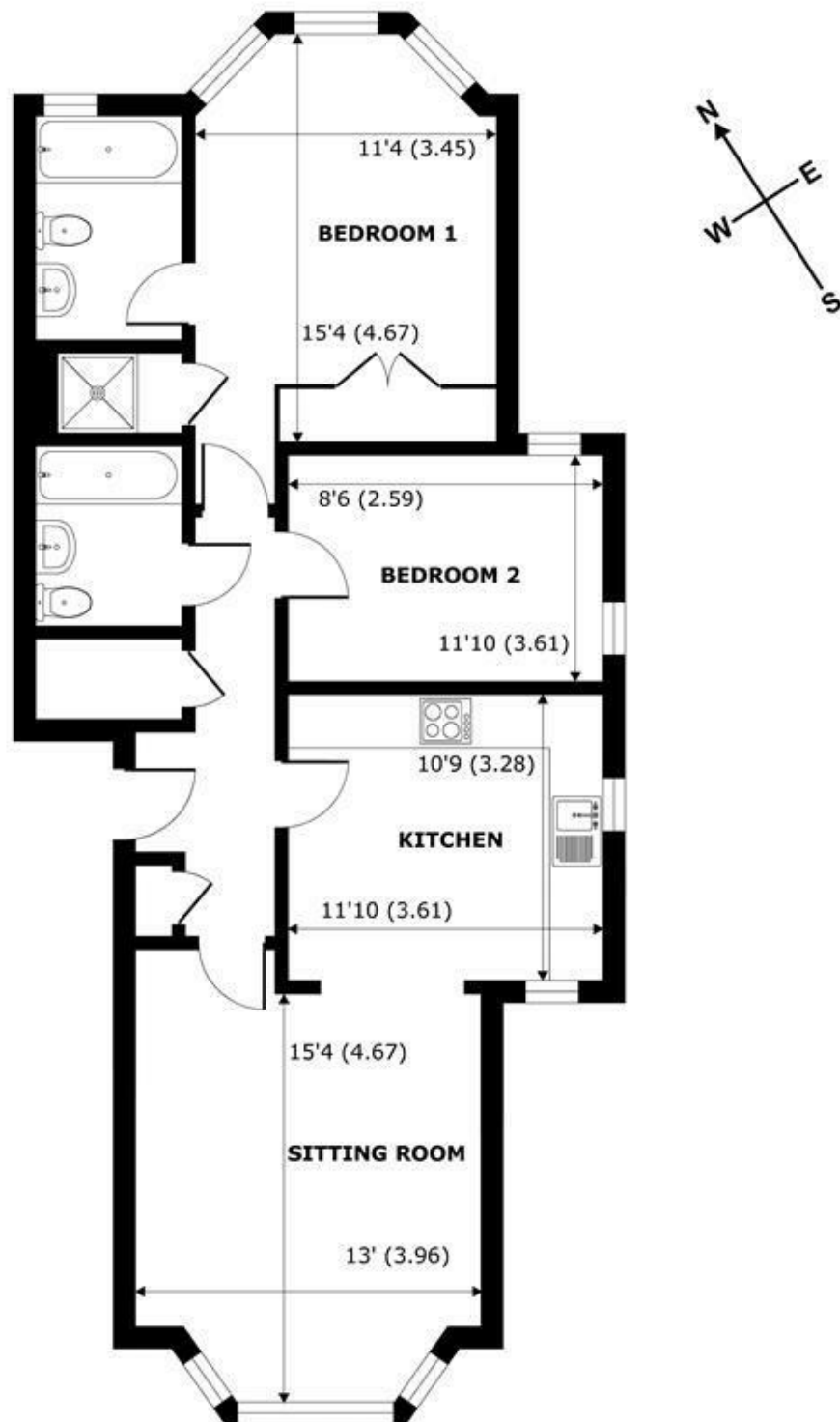


A beautifully presented light and spacious 2 double bedroom, 2 bath ground floor apartment located in this central position just a few minutes' walk from Windsor town centre. Further benefits include 2 allocated parking spaces, updated bathrooms and no chain.



Features

- Spacious Ground Floor Apartment
- 2 Double Bedrooms
- Close to Windsor Town Centre
- Short Walk to Windsor Town Centre, Local Shops, Restaurants and Direct Rail Links to London
- Share of Freehold
- Beautifully Presented
- 2 Allocated Parking Spaces
- No Chain
- Two Bathrooms (1 x en-suite)



Nightingale Walk, Windsor, SL4

Approximate Internal Area = 821 sq ft / 76.3 sq m

Approximate External Area = 939 sq ft / 87.2 sq m

For identification only - Not to scale



Floor plan produced in accordance with RICS Property Measurement Standards incorporating International Property Measurement Standards (IPMS2 Residential). © richcom 2020. Produced for Hardings. REF: 628969





11 High Street, Windsor, Berkshire, SL4 1LD,
T: 01753 833 118 | E: info@hardings.co.uk
www.hardings.co.uk

