



# HARDINGS



Crofthill Road  
£2,200 PCM

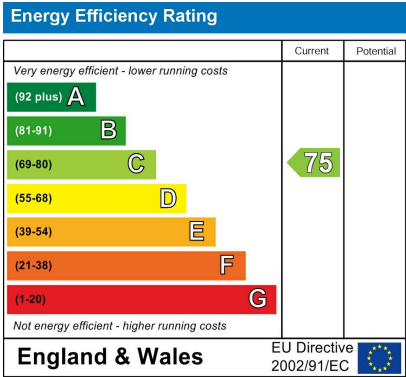






Nestled on the charming Crofthill Road in Slough, this delightful semi-detached house offers a perfect blend of comfort and space. With a generous area of 1,184 square feet, the property boasts three well-proportioned bedrooms, open plan living space and rear garden making it an ideal home for families.

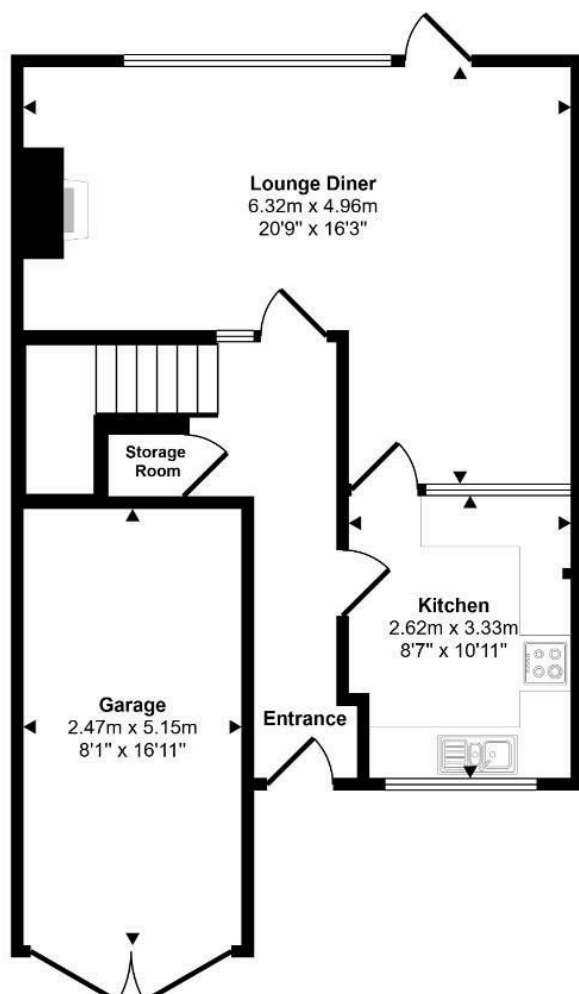
Offered unfurnished, available Now.



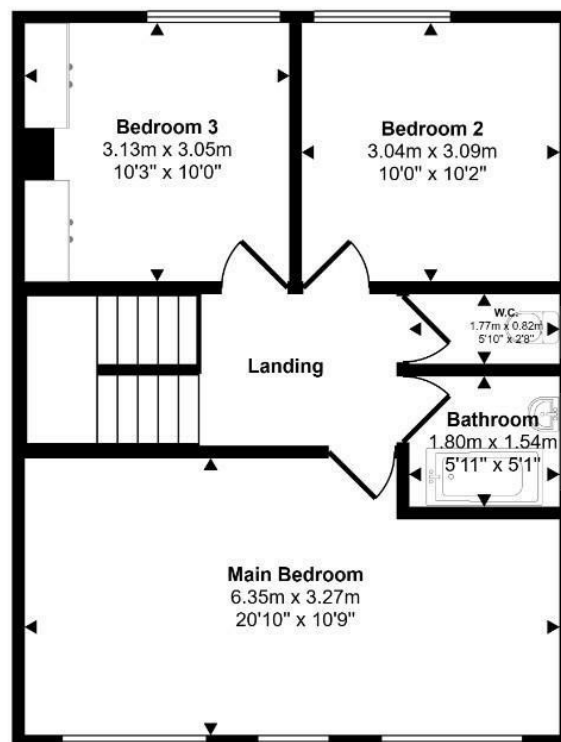
### Features

- Three double bedrooms
- Driveway
- Side access
- Spacious living/dining room
- Local Amenities
- Private rear garden
- Garage
- Redecorated throughout
- Close to Slough Business Park
- Available Now

Approx Gross Internal Area  
112 sq m / 1203 sq ft



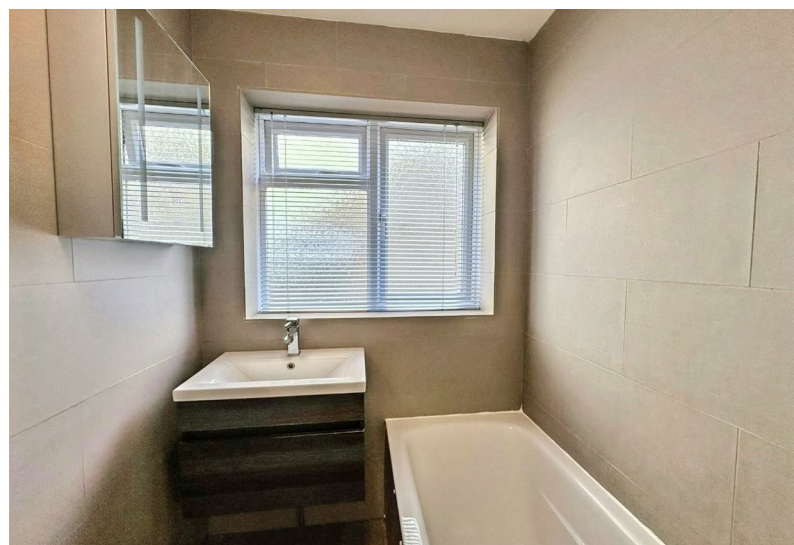
Ground Floor  
Approx 58 sq m / 628 sq ft



First Floor  
Approx 53 sq m / 575 sq ft

This floorplan is only for illustrative purposes and is not to scale. Measurements of rooms, doors, windows, and any items are approximate and no responsibility is taken for any error, omission or mis-statement. Icons of items such as bathroom suites are representations only and may not look like the real items. Made with Made Snappy 360.





11 High Street, Windsor, Berkshire, SL4 1LD,  
T: 01753 833 118 | E: [info@hardings.co.uk](mailto:info@hardings.co.uk)  
[www.hardings.co.uk](http://www.hardings.co.uk)

