



HARDINGS

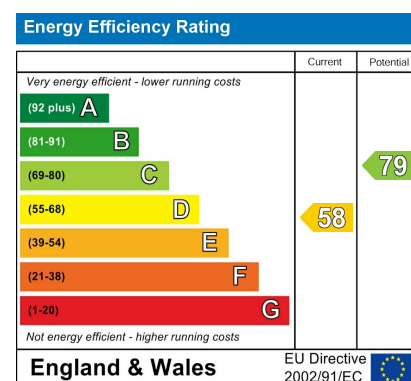


Adelaide Square
Guide Price £795,000



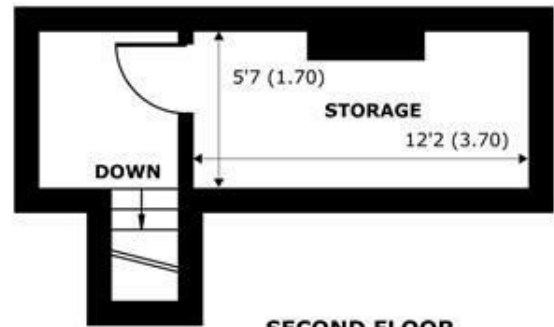
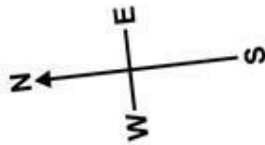


A charming two bedroom Grade II listed period house located in a delightful enclave in the Golden Triangle just a short walk to the Long Walk, local shops, restaurants and cafes and British Rail links to London. In need of some updating, the property further benefits from a delightful west facing private garden, small bistro terrace off the kitchen and permit parking.

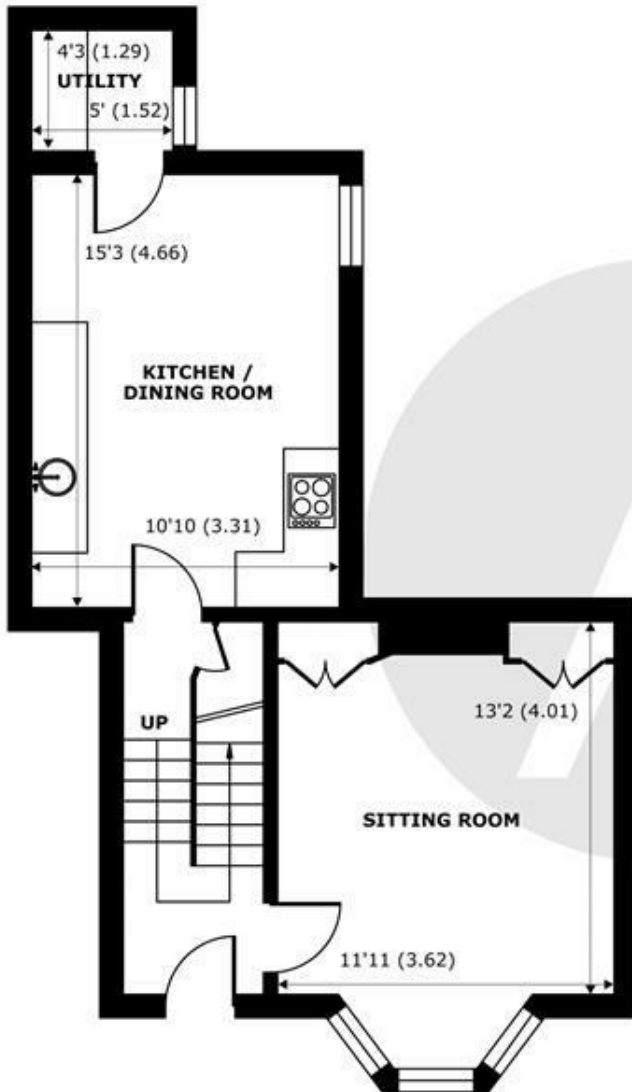


Features

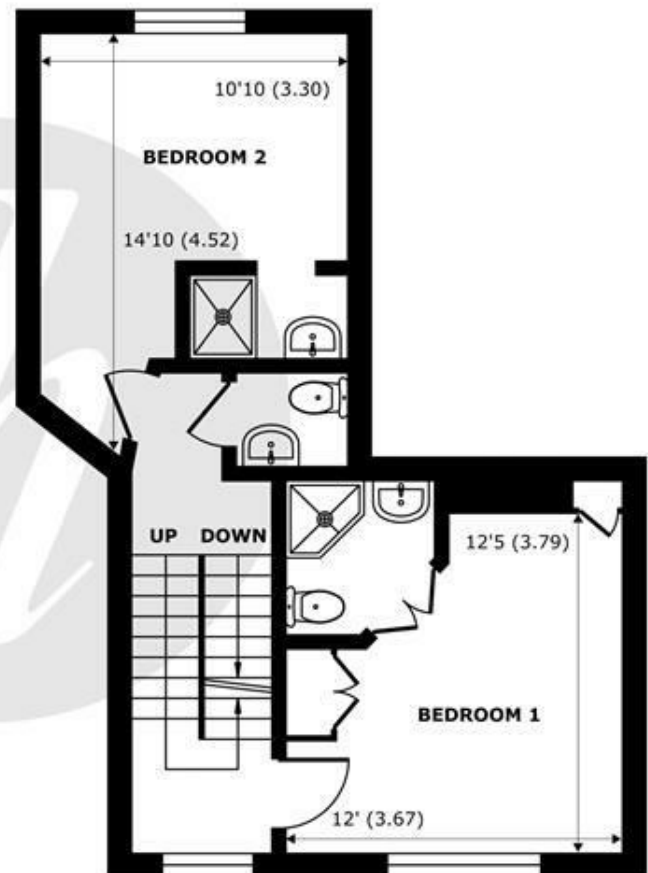
- Grade II Listed House
- Kitchen /Breakfast Room with Access onto Small Courtyard Terrace
- Two En-Suite Bathrooms
- Reception
- West Facing Garden
- Close to The Long Walk, Local Shops & Direct Rail Links to London (Waterloo & Paddington)
- Cloakroom
- Two Bedrooms



SECOND FLOOR
abt 153 SQFT (14.2 SQMT)



GROUND FLOOR
abt 530 SQFT (49.2 SQMT)



FIRST FLOOR
abt 476 SQFT (44.2 SQMT)

Adelaide Square, Windsor, SL4

Approximate Internal Area = 936 sq ft / 86.9 sq m

Approximate External Area = 1159 sq ft / 107.6 sq m

For identification only - Not to scale



Floor plan produced in accordance with RICS Property Measurement 2nd Edition,
Incorporating International Property Measurement Standards (IPMS2 Residential). © nichecom 2025.
Produced for Hardings. REF: 1321397





11 High Street, Windsor, Berkshire, SL4 1LD,
T: 01753 833 118 | E: info@hardings.co.uk
www.hardings.co.uk

