



HARDINGS



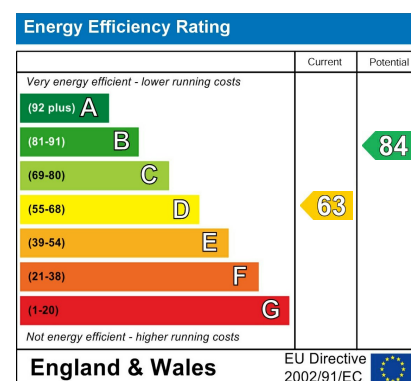
Hemwood Road
£2,750 Per Month





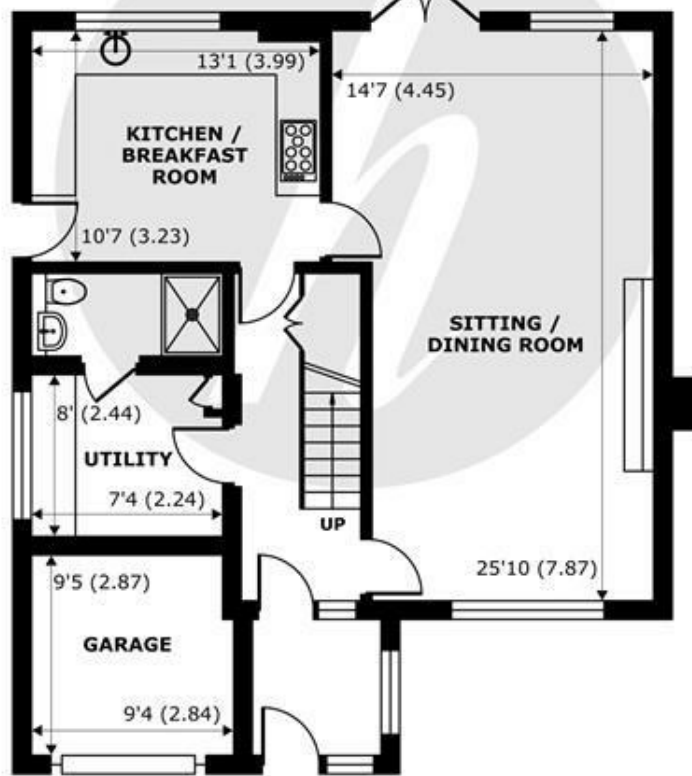
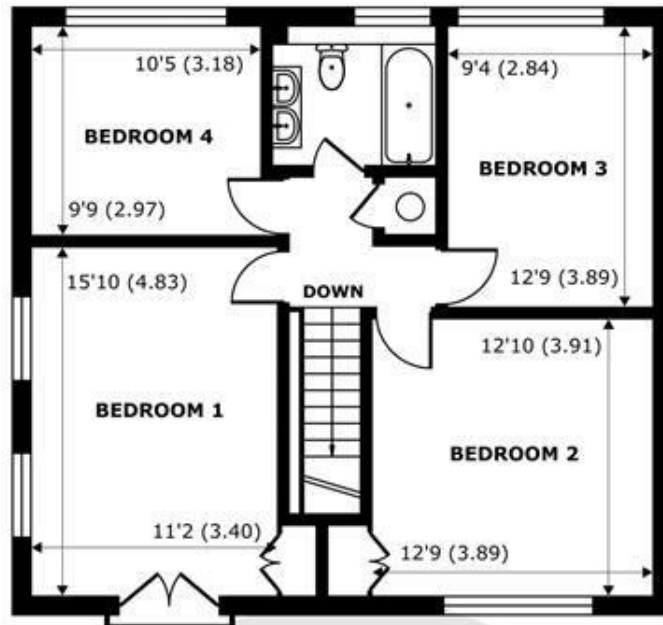
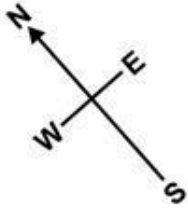
A detached, family home with driveway parking and a sizeable private garden. The house boasts ample floor space with a downstairs utility & shower room, large reception and four double bedrooms.

Offered unfurnished



Features

- Detached
- Modern throughout
- Bright living space
- Integral garage
- Four double bedrooms
- Driveway parking
- Large private garden
- Downstairs shower room
- Tax band F & EPC D
- Available Now



Hemwood Road, Windsor, SL4

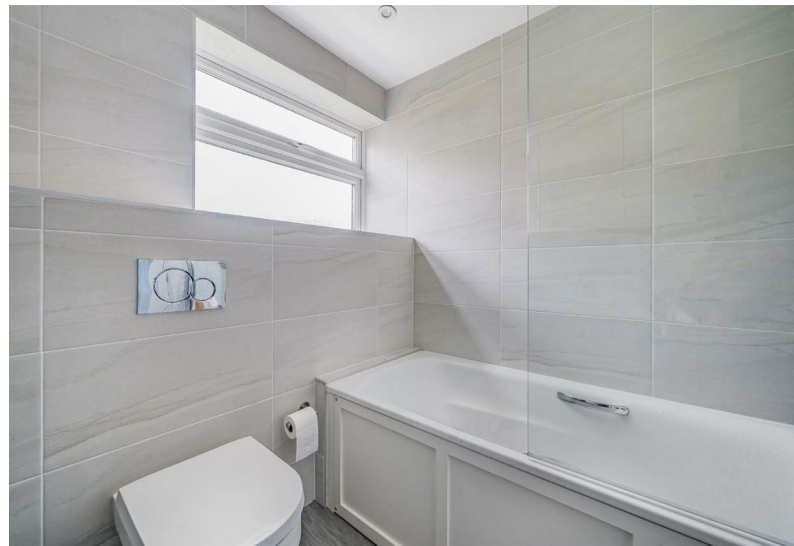
Approximate Internal Area = 1472 sq ft / 136.7 sq m (Exclude Garage)
 Approximate External Area = 1660 sq ft / 154.2 sq m (Exclude Garage)

For identification only - Not to scale



Floor plan produced in accordance with RICS Property Measurement Standards incorporating International Property Measurement Standards (IPMS2 Residential). © nichecom 2022. Produced for Hardings. REF: 812642





11 High Street, Windsor, Berkshire, SL4 1LD,
T: 01753 833 118 | E: info@hardings.co.uk
www.hardings.co.uk

