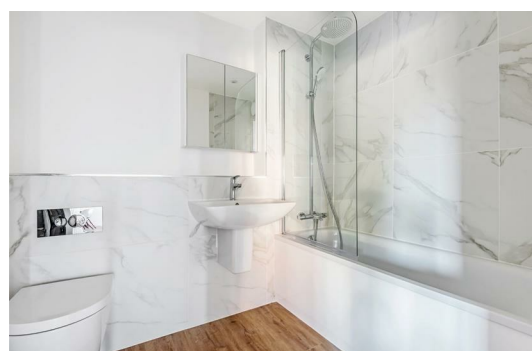
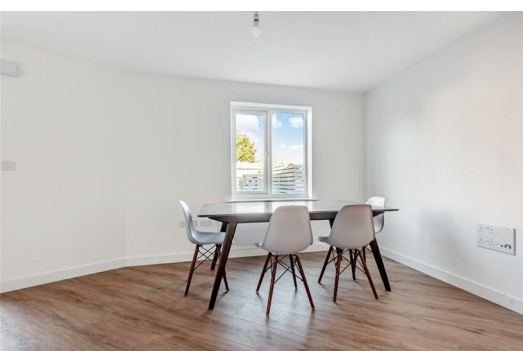




HARDINGS



Whistler Mews
£1,200 PCM

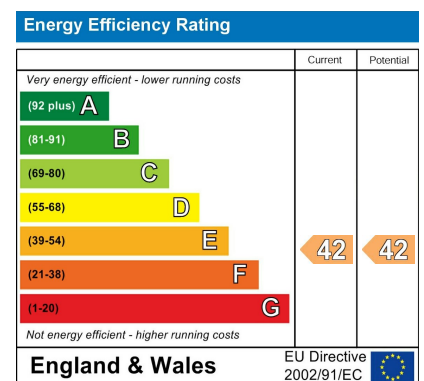




A one bedroom ground floor apartment in a gated development with it's own private entrance.

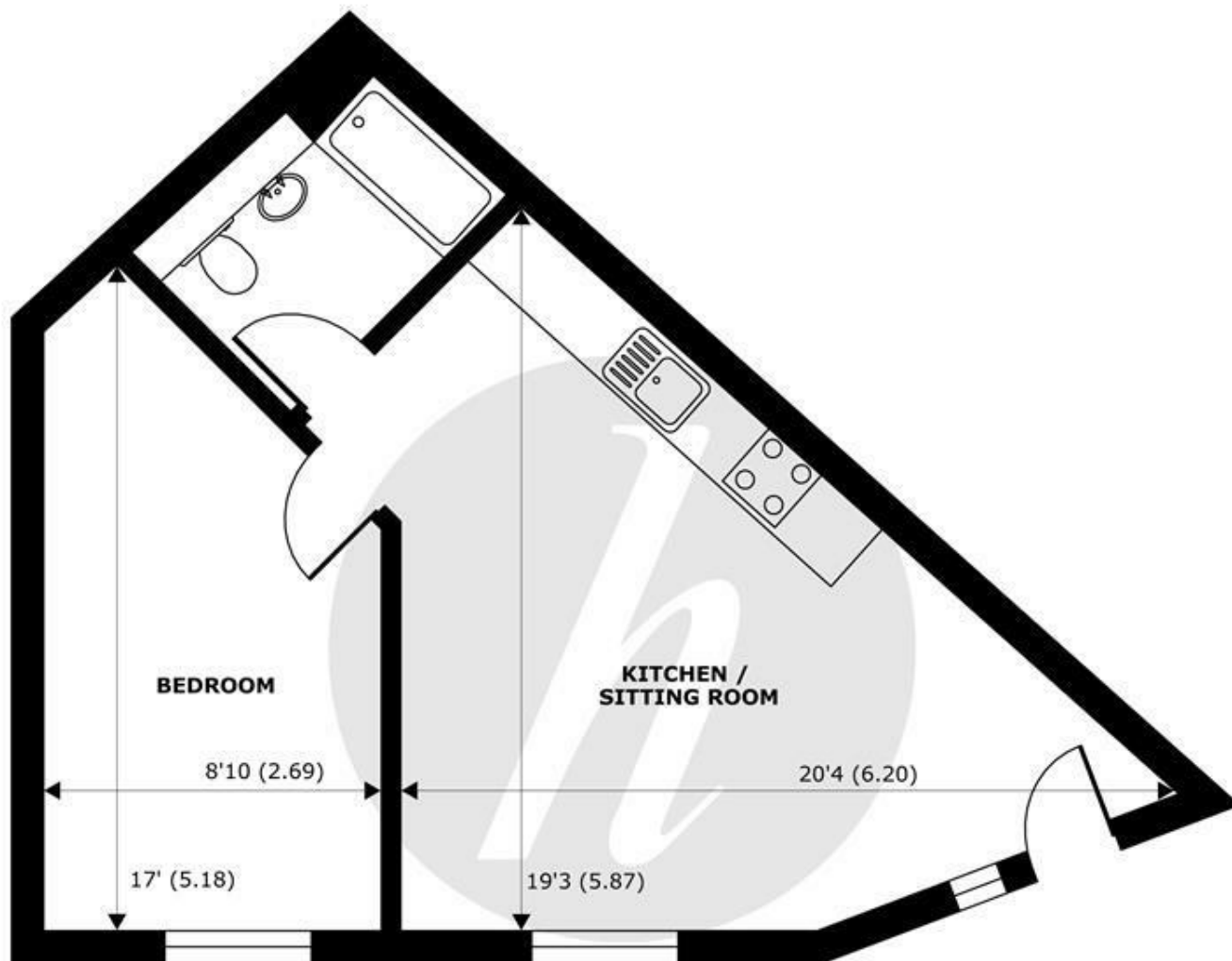
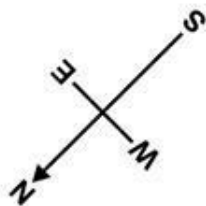
This property is within close proximity to Windsor Town Centre, located on a residential street close to local amenities.

Offered unfurnished, available now.



Features

- Modern Throughout
- 1 Bathroom
- Unfurnished
- Available end of December
- 1 Bedroom
- Open plan kitchen dining room
- Close to town Center



GROUND FLOOR
abt 498 SQFT (46.2 SQMT)

Whistler Mews, Windsor, SL4

Approximate Internal Area = 422 sq ft / 39.2 sq m

Approximate External Area = 498 sq ft / 46.2 sq m

For identification only - Not to scale



Certified
Property
Measurer

Floor plan produced in accordance with RICS Property Measurement Standards incorporating International Property Measurement Standards (IPMS2 Residential). © n/checom 2021. Produced for Hardings. REF: 789455



11 High Street, Windsor, Berkshire, SL4 1LD,
T: 01753 833 118 | E: info@hardings.co.uk
www.hardings.co.uk

