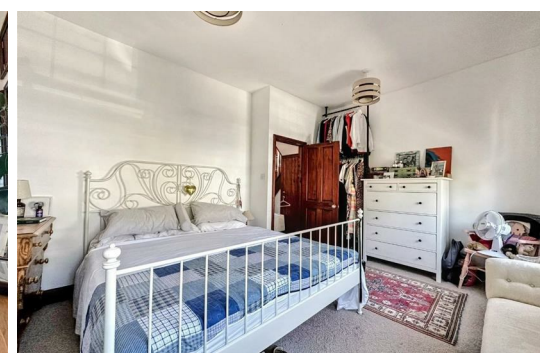




HARDINGS



Albert Street
£2,500 PCM





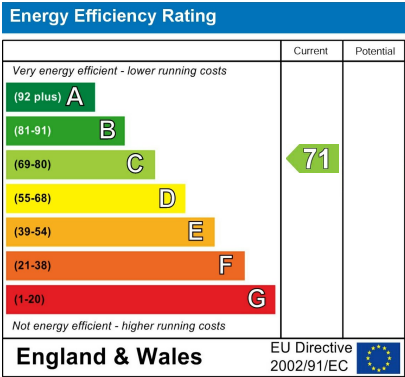
Nestled in the charming locale of Albert Street, Windsor, this Georgian Terrace home has been tastefully modernised for family living.

Upon entering, you are welcomed into a spacious open plan living/dining room followed by a fully equipped kitchen and downstairs cloakroom.

To the first floor, the property offers two double bedrooms, complemented by a well-appointed bathroom and a versatile bonus loft room, which can serve as an additional bedroom, a study, or a playroom, catering to your specific needs.

Outside, there is a sunny south facing garden where you will find a sun deck for relaxing and a purpose built office, perfect for those who work from home or require a quiet space for study or hobbies.

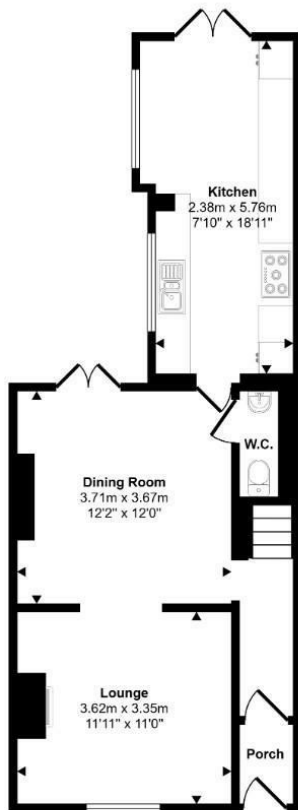
Windsor is renowned for its picturesque surroundings and rich heritage, making this property an excellent choice for those seeking a vibrant community with local amenities, parks, and transport links nearby. The property is within walking distance to Windsor Leisure Centre and is the catchment area for good primary and secondary schools.



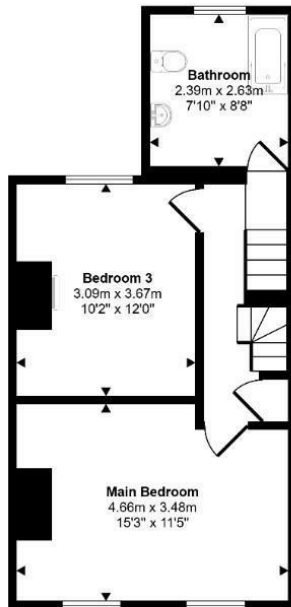
Features

- Two Double Bedrooms
- Modern bathroom suite
- Purpose built outdoor office with power
- Unfurnished
- Sought after location - close to Windsor Town Centre
- Bonus Loft room
- Downstairs WC
- Permit Parking available
- Sunny south facing garden with sun terrace
- EPC rating -C

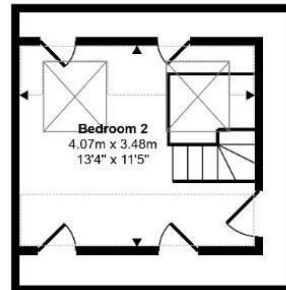
Approx Gross Internal Area
123 sq m / 1319 sq ft



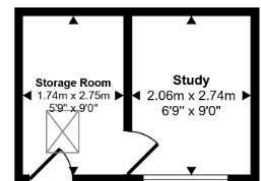
Ground Floor
Approx 49 sq m / 526 sq ft



First Floor
Approx 41 sq m / 439 sq ft



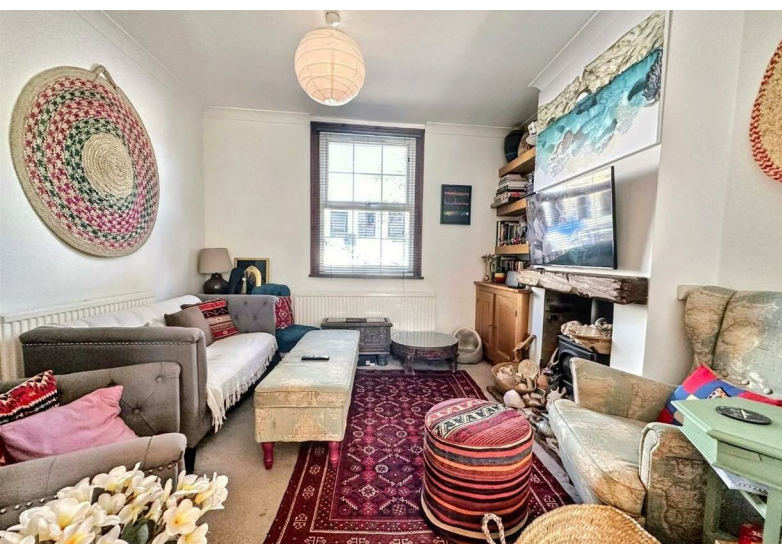
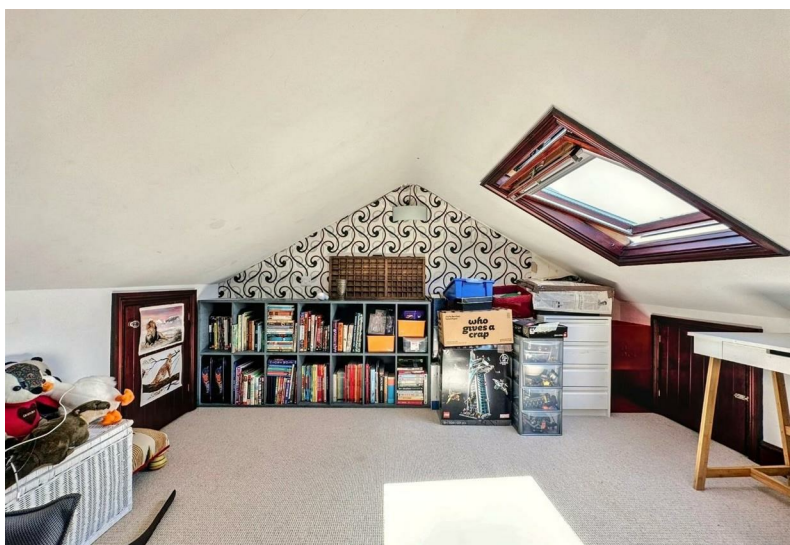
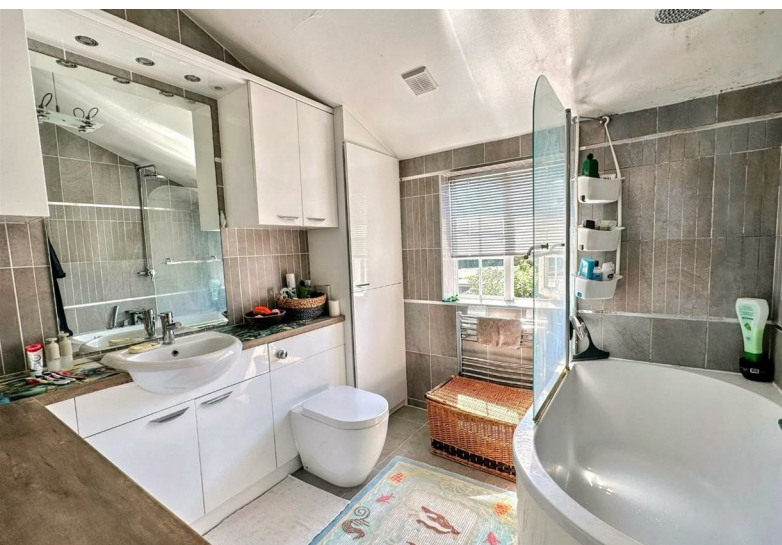
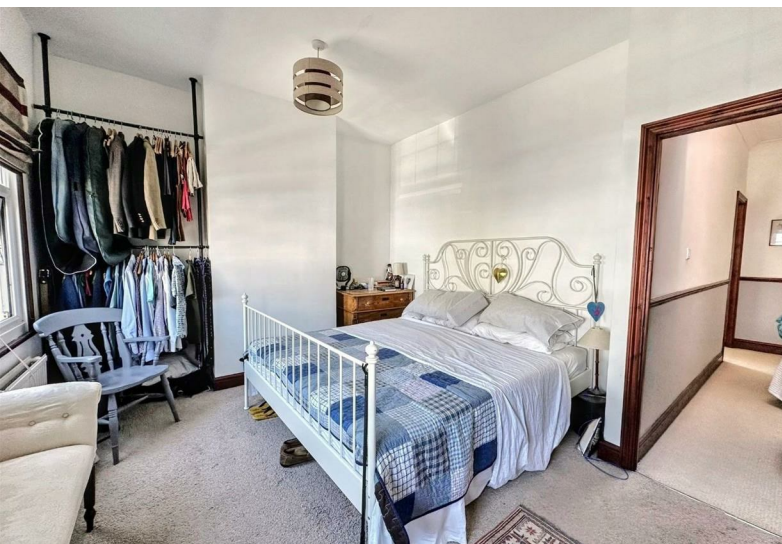
Second Floor
Approx 22 sq m / 236 sq ft



Outbuilding
Approx 11 sq m / 117 sq ft

Denotes head height below 1.5m

This floorplan is only for illustrative purposes and is not to scale. Measurements of rooms, doors, windows, and any items are approximate and no responsibility is taken for any error, omission or mis-statement. Icons of items such as bathroom suites are representations only and may not look like the real items. Made with Made Snappy 360.



11 High Street, Windsor, Berkshire, SL4 1LD,
T: 01753 833 118 | E: info@hardings.co.uk
www.hardings.co.uk

