



HARDINGS

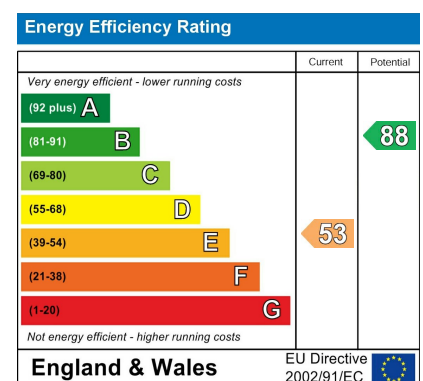


Prince Consort Cottages
Guide Price £550,000





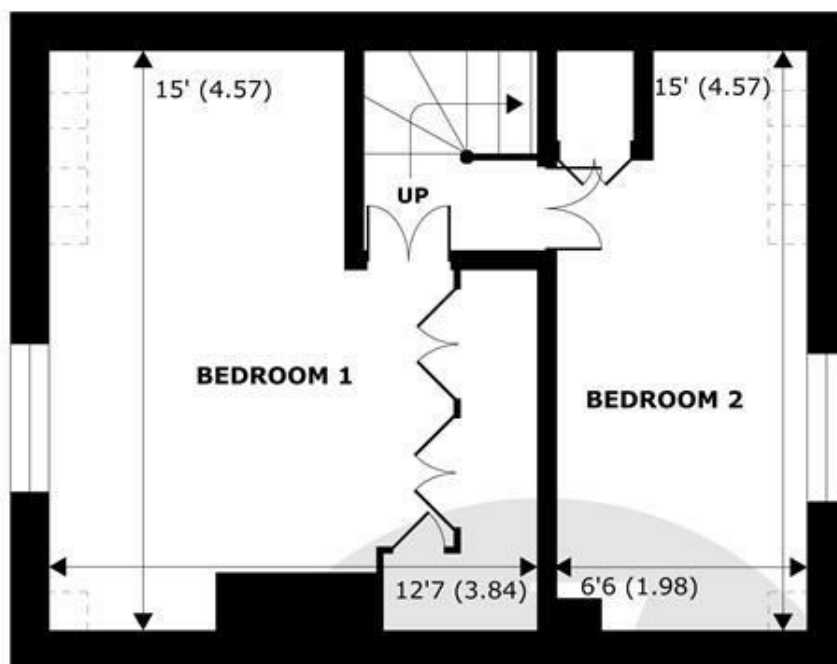
A delightful Grade II listed Cottage tucked away in a quiet Victorian development in the heart of Windsor Town Centre. The property features a bright reception room, two bedrooms and a rear courtyard garden with rear access to Alexandra Road. Previous Winner of Gold of the APL Awards for Pocket Garden in 2023 and offered to the market chain free.



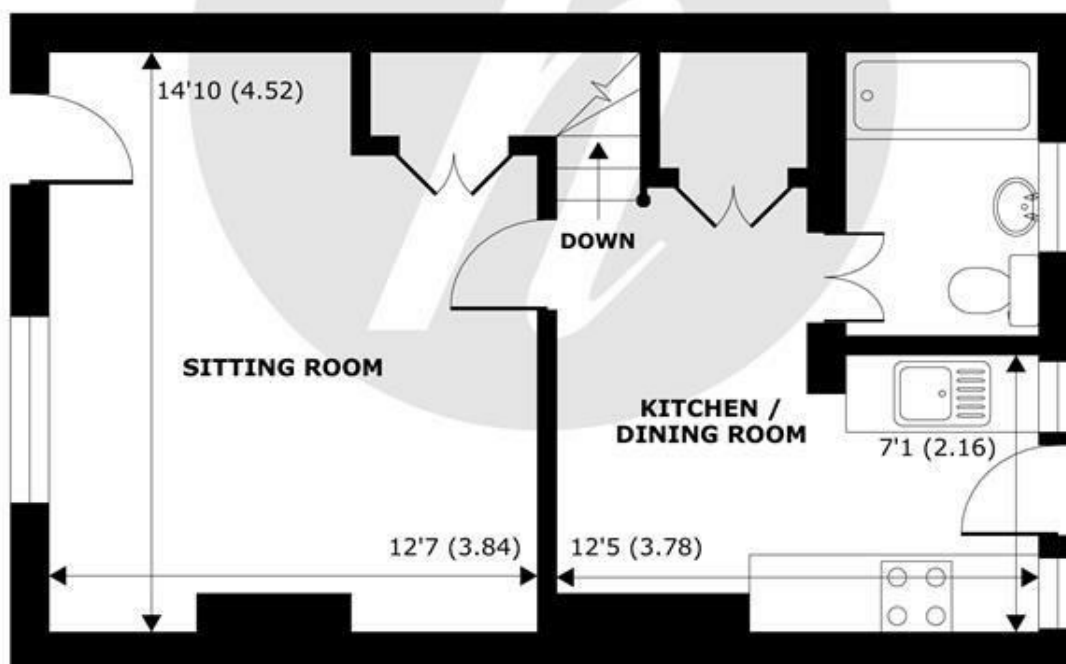
Features

- Grade II Listed Cottage
- Elegant Finish Throughout
- Gold Winner of APL Awards 2023 for Pocket Garden
- No Onward Chain
- Wealth of Period Features
- Sought after Location
- Master Bedroom with Fitted Wardrobes
- Eat in Kitchen
- Rear Access
- Two Bedrooms

NOT TO SCALE



FIRST FLOOR
abt 368 SQFT (34.1 SQMT)



GROUND FLOOR
abt 470 SQFT (43.6 SQMT)

APPROX. GROSS INTERNAL FLOOR AREA 668 SQFT 62 SQM
(EXCLUDE RESTRICTED HEAD HEIGHTS)
APPROX. GROSS EXTERNAL FLOOR AREA 838 SQFT 77.8 SQM

Prince Consort Cottages, Windsor, SL4



Whilst every attempt has been made to ensure the accuracy of the floor plan contained here, measurements of doors, windows and rooms are approximate and no responsibility is taken for any error, omission or misstatement. These plans are for representation purposes only as defined by RICS Code of Measuring Practice and should be used as such by any prospective purchaser. Specifically no guarantee is given on the total square footage of the property if quoted on this plan. Any figure given is for initial guidance only and should not be relied on as a basis of valuation.

Copyright nichecom.co.uk 2018 Produced for Hardings ref. 260023



11 High Street, Windsor, Berkshire, SL4 1LD,
T: 01753 833 118 | E: info@hardings.co.uk
www.hardings.co.uk

