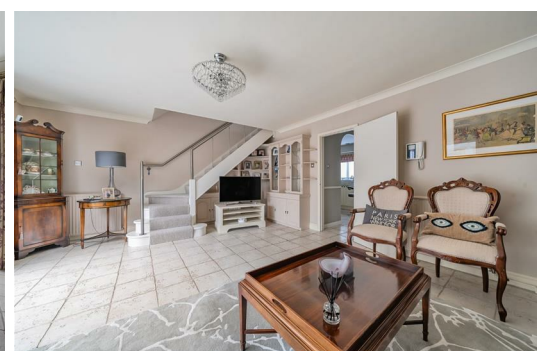




HARDINGS




Alexandra Road
Guide Price £750,000



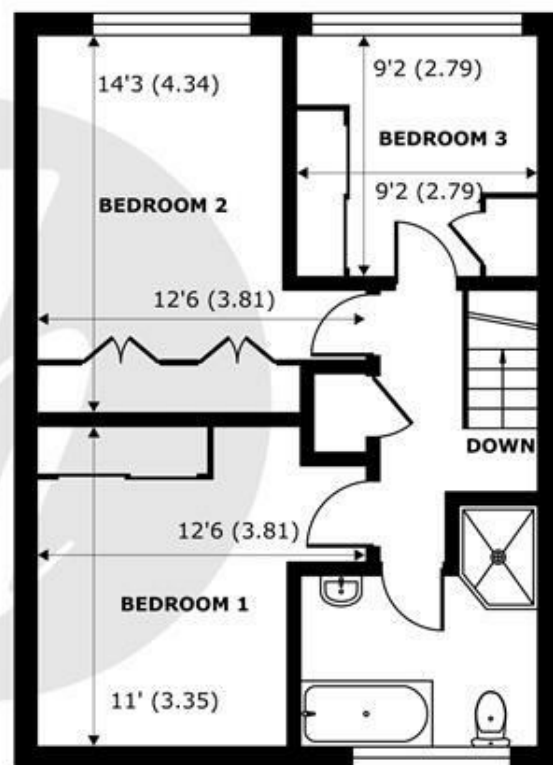
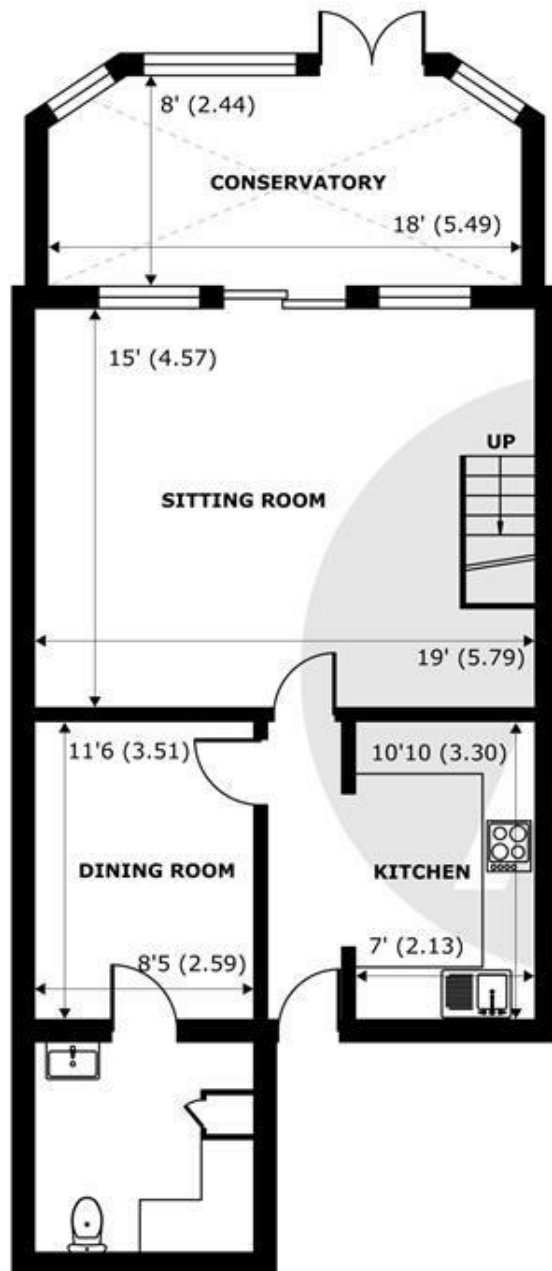
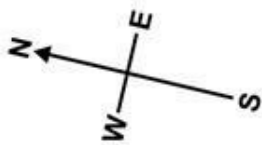


A spacious and well presented 3 bedroom terraced house, located in the heart of Windsor town centre just a short walk to local shops, restaurants, cafes and transport links to London. Rare to the market, this property enviably comes with off-street parking for 2 cars and further benefits from a conservatory, pedestrian access to the garden and approx. 300 square feet sitting room.

Energy Efficiency Rating		
	Current	Potential
Very energy efficient - lower running costs		
(92 plus) A		85
(81-91) B		
(69-80) C		
(55-68) D	68	
(39-54) E		
(21-38) F		
(1-20) G		
Not energy efficient - higher running costs		
England & Wales		EU Directive 2002/91/EC 

Features

- 3 Bedroom House
- Utility Room & WC
- Conservatory
- Town Centre Location
- No Onward Chain
- Off Street Parking for 2 Cars
- Approx 300 square feet Sitting Room
- Low Maintenance Garden with Pedestrian Access
- Converted Garage
- Short Walk to Local Restaurants, Shops, Cafes and Mainline Rail Links to London



Alexandra Road, Windsor, SL4

Approximate Internal Area = 1253 sq ft / 116.4 sq m

Approximate External Area = 1438 sq ft / 133.5 sq m

For identification only - Not to scale



Floor plan produced in accordance with RICS Property Measurement Standards incorporating International Property Measurement Standards (IPMS2 Residential). © nichecom 2024. Produced for Hardings. REF: 1189439





11 High Street, Windsor, Berkshire, SL4 1LD,
T: 01753 833 118 | E: info@hardings.co.uk
www.hardings.co.uk

