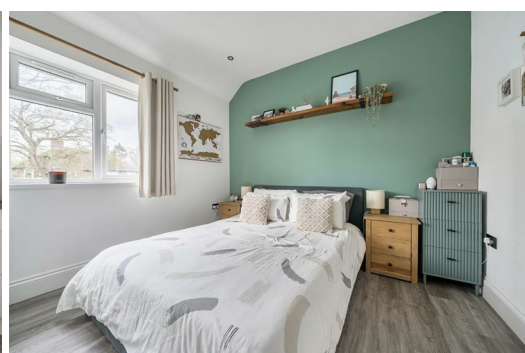




HARDINGS



Surly Hall Walk
Asking Price £295,000





Located in Surly Hall Walk, Windsor, this two-bedroom flat is presented in immaculate condition throughout and offers well-planned, practical accommodation.

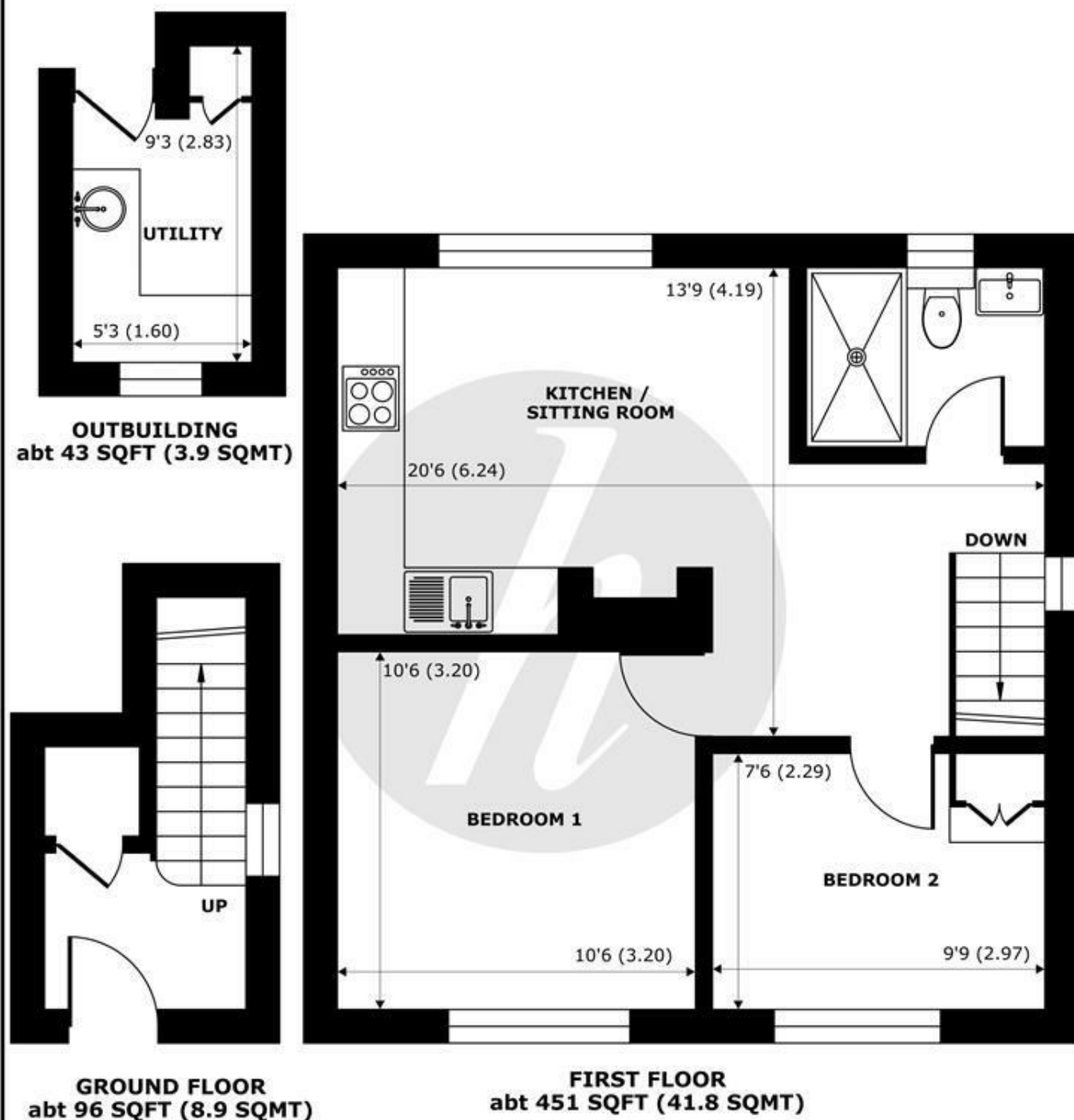
The property features a modern integrated kitchen with good storage, along with a separate utility room for added convenience. The living space is bright and well-proportioned, with underfloor heating throughout and views over the private garden.

This impressive maisonette is offered to the market with no onward chain.

Energy Efficiency Rating		
	Current	Potential
Very energy efficient - lower running costs		
(92 plus) A		
(81-91) B		
(69-80) C	76	76
(55-68) D		
(39-54) E		
(21-38) F		
(1-20) G		
Not energy efficient - higher running costs		
England & Wales		EU Directive 2002/91/EC

Features

- Two Bedroom
- No Onward Chain
- Modern Integrated Kitchen
- Underfloor Heating
- Immaculate Condition Throughout
- Own Front Door
- Separate Utility Room
- Large Private Garden



Surly Hall Walk, Windsor, SL4

Approximate Internal Area = 508 sq ft / 47.1 sq m (Exclude Outbuildings)

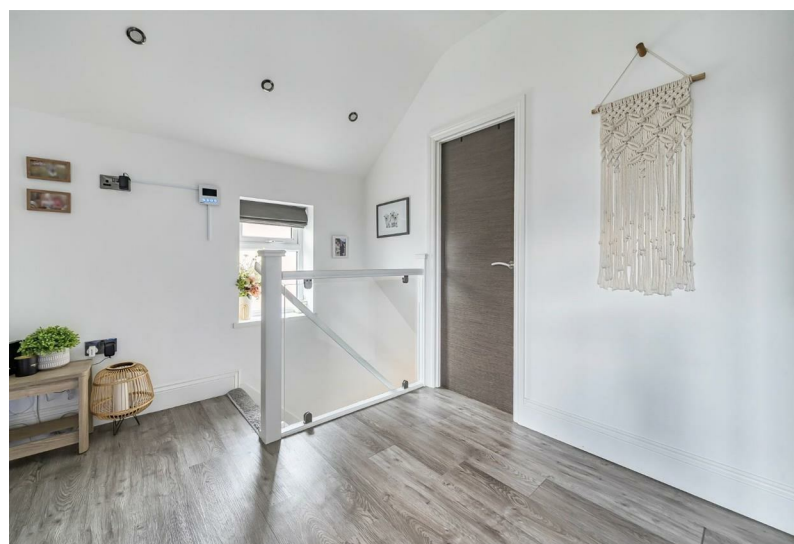
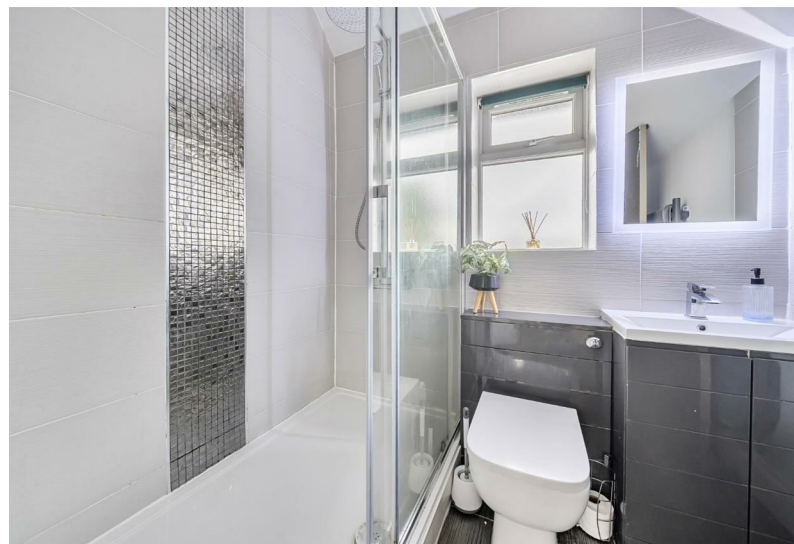
Approximate External Area = 635 sq ft / 58.9 sq m (Exclude Outbuildings)

For identification only - Not to scale



Floor plan produced in accordance with RICS Property Measurement 2nd Edition, Incorporating International Property Measurement Standards (IPMS2 Residential). © nichecom 2026. Produced for Hardings. REF: 1410036





11 High Street, Windsor, Berkshire, SL4 1LD,
T: 01753 833 118 | E: info@hardings.co.uk
www.hardings.co.uk

