



HARDINGS



Claremont Road
£5,000 PCM

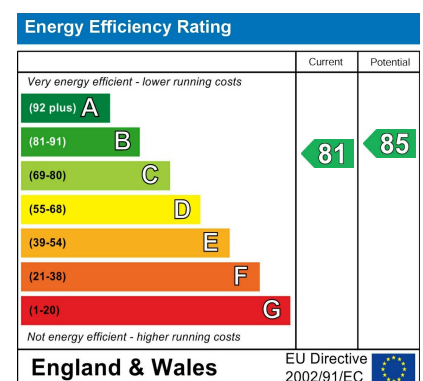




Welcome to Claremont Road, Windsor - a stunning property that exudes elegance and charm! This beautiful villa boasts 2 reception rooms, perfect for entertaining guests or simply relaxing with your loved ones. With 4 spacious bedrooms and 4 modern bathrooms, there is plenty of room for the whole family to enjoy.

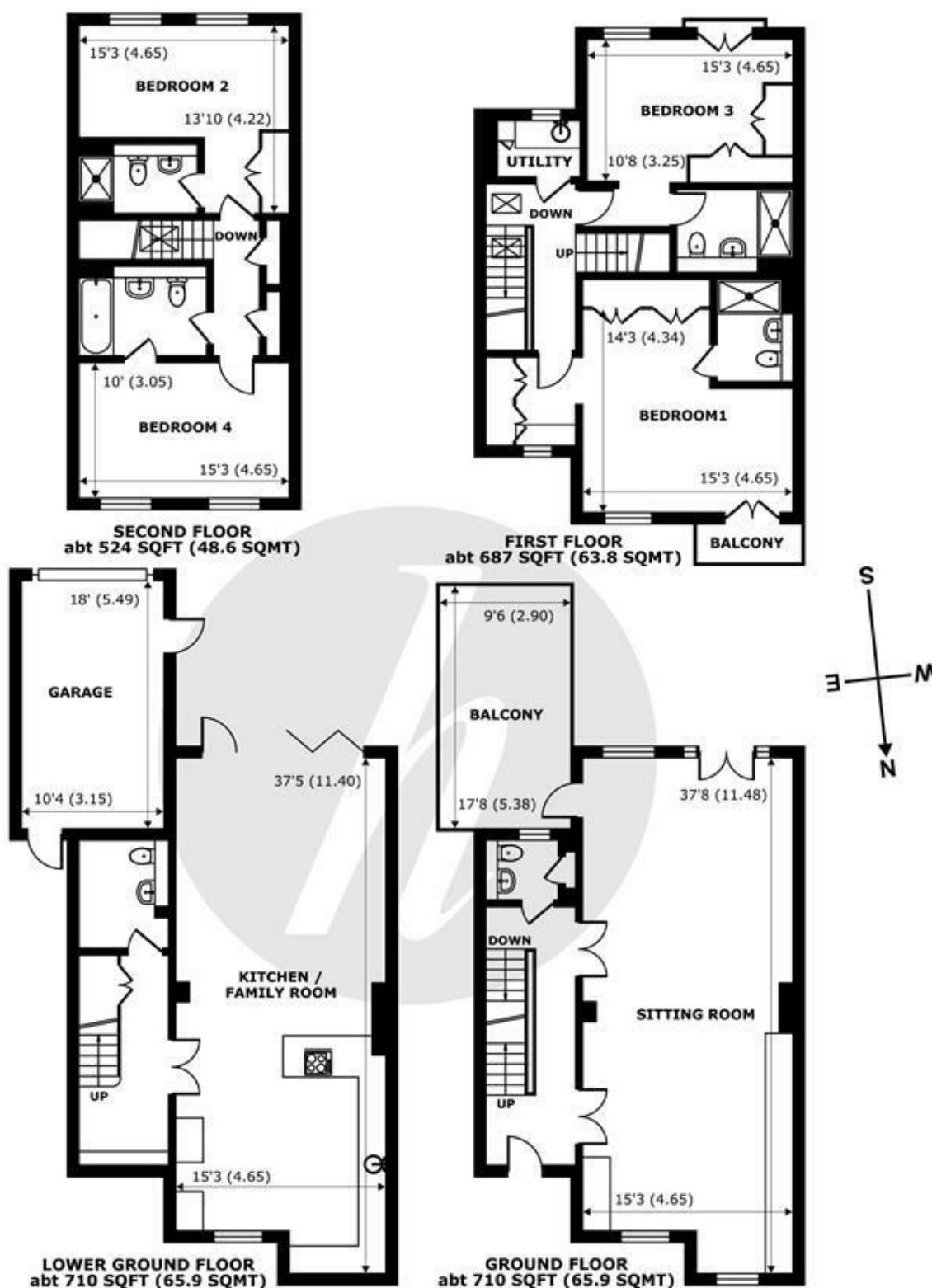
With accommodation spanning over four floors the property benefits from fabulous living space, master suite with dressing area and en-suite, sunken south facing terrace, utility room on second floor a garage and gated parking for 1 car.

Situated in a prime location on one of Windsor's most sought after roads, this home is just a moments walk from Windsor Town Centre which offers a vast array of restaurants, retail shops and transport links into Central London.



Features

- EPC Rating - B
- Sought After Town Centre Location
- South Facing landscaped Garden
- Additional WC on the lower and ground floor
- Excellent Storage space
- 4 Double bedrooms & 4 Bathrooms (4 x en-suite)
- Garage with parking for 1 car & additional Gated Parking for 1 Car
- South Facing Roof Terrace off The Lounge
- Separate Utility Room on Second Floor
- Underfloor Heating Throughout



Claremont Road, Windsor, SL4

Approximate Internal Area = 2631 sq ft / 244.4 sq m (Excludes garage)

Approximate External Area = 3012 sq ft / 279.8 sq m (Excludes garage)

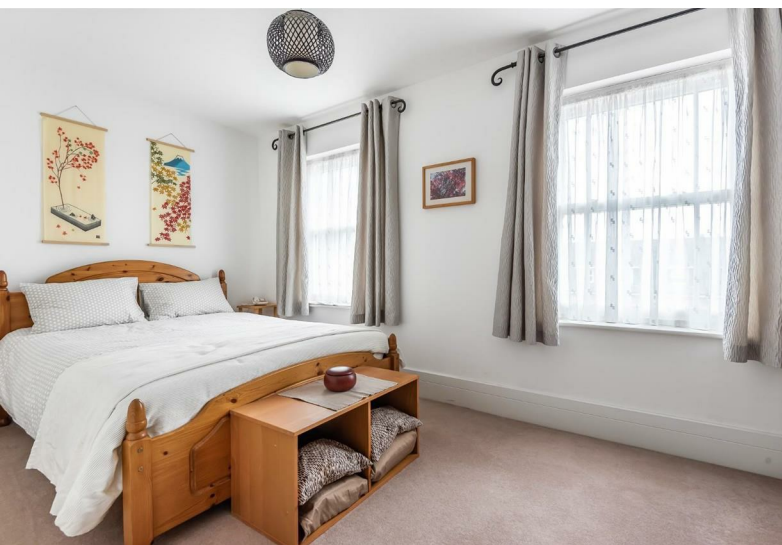
For identification only - Not to scale



Certified
Property
Measurer

Floor plan produced in accordance with RICS Property Measurement Standards incorporating International Property Measurement Standards (IPMS2 Residential). © nichecom 2022. Produced for Hardings. REF: 830627





11 High Street, Windsor, Berkshire, SL4 1LD,
T: 01753 833 118 | E: info@hardings.co.uk
www.hardings.co.uk

