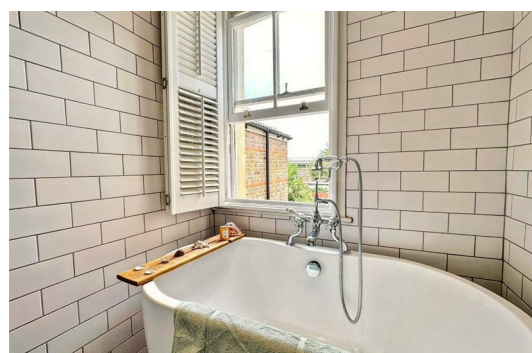




# HARDINGS



Bourne Avenue  
£2,100 PCM





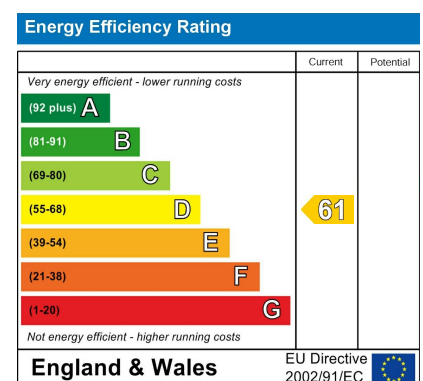


Nestled on the charming Bourne Avenue in the historic town of Windsor, this delightful house offers a perfect blend of period character and modern convenience. Built in 1880, the property spans an inviting 786 square feet and features two spacious double bedrooms, making it an ideal home for couples and small families.

Upon entering, you are welcomed into a well-proportioned dining/living room, followed by a modern gally kitchen with patio doors onto the private rear garden.

The house boasts two double bedrooms and two stylish bathrooms, including a convenient en-suite attached to the master bedroom.

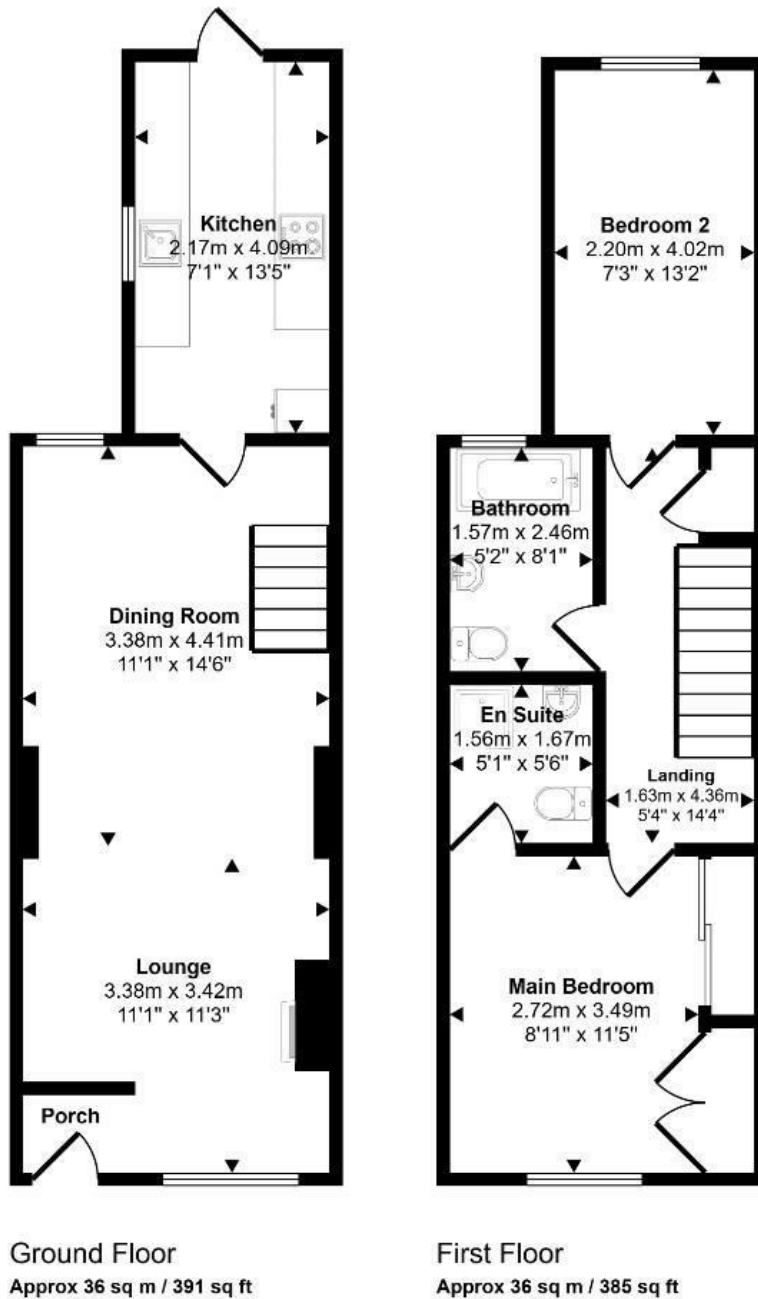
The property benefits from permit parking. With its prime location, you will find yourself just a stone's throw away from Windsor's vibrant amenities, including shops, restaurants, and the stunning Windsor Castle.



## Features

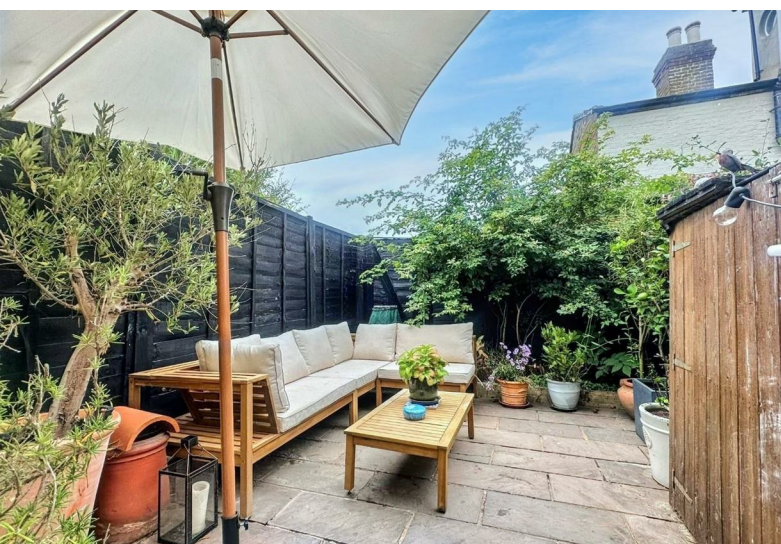
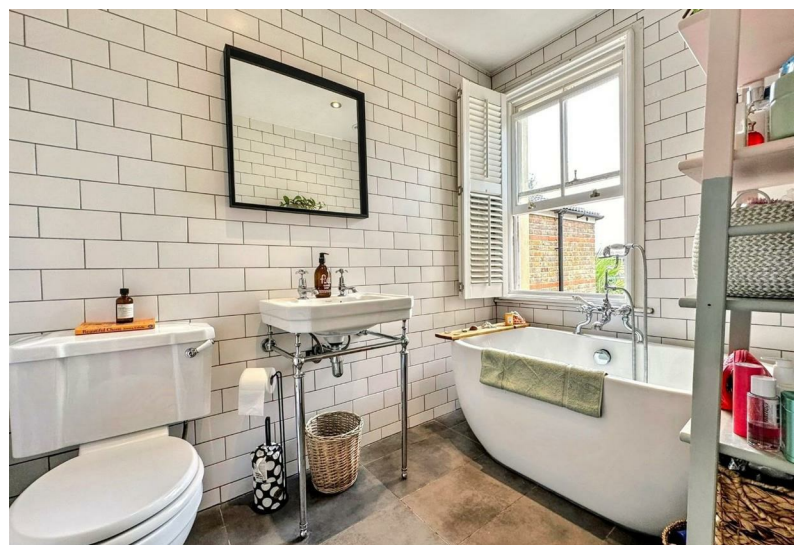
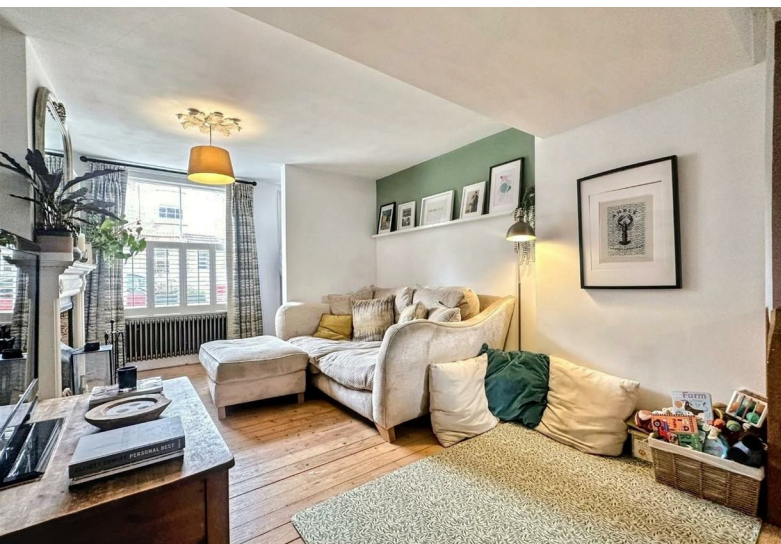
- Beautifully presented period property
- Stylish family bathroom and en-suite
- Permit parking available
- Quiet residential area
- Available as soon as possible
- Two double bedrooms
- Paved courtyard garden
- Unfurnished
- Property will be newly carpeted upstairs

Approx Gross Internal Area  
72 sq m / 775 sq ft



This floorplan is only for illustrative purposes and is not to scale. Measurements of rooms, doors, windows, and any items are approximate and no responsibility is taken for any error, omission or mis-statement. Icons of items such as bathroom suites are representations only and may not look like the real items. Made with Made Snappy 360.





11 High Street, Windsor, Berkshire, SL4 1LD,  
T: 01753 833 118 | E: [info@hardings.co.uk](mailto:info@hardings.co.uk)  
[www.hardings.co.uk](http://www.hardings.co.uk)

