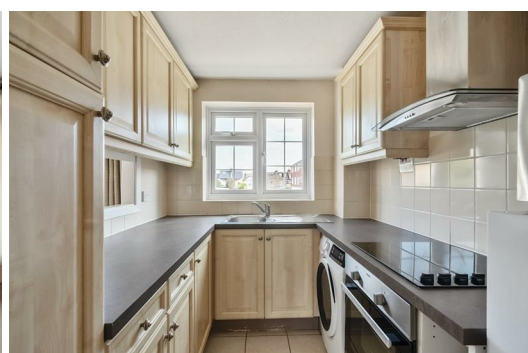




HARDINGS



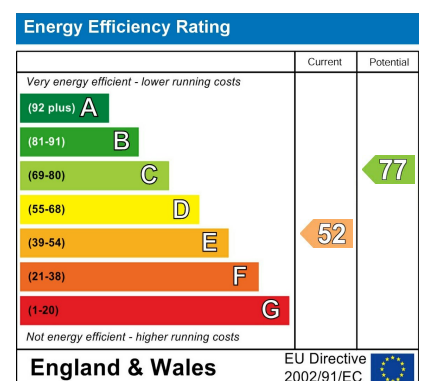
Lammas Court
Offers Over £375,000





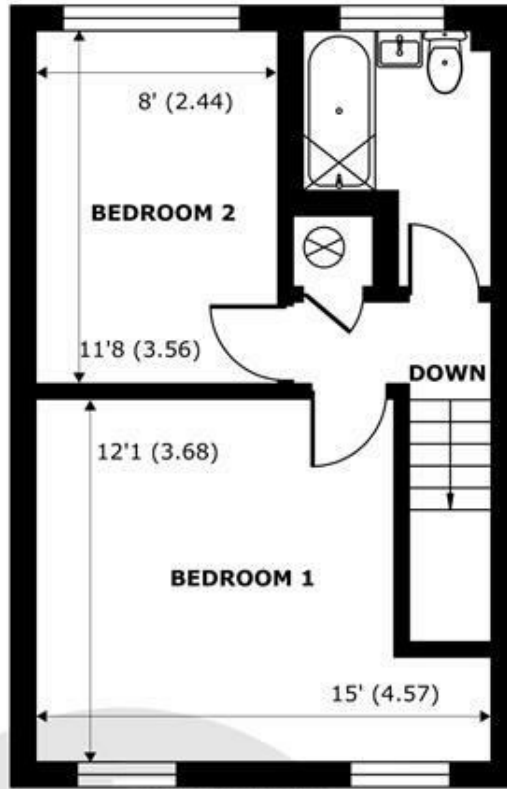
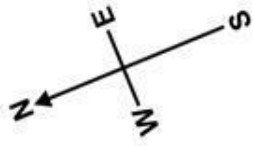
This two-bedroom, end of terraced maisonette with adjoining gated garden, is bright and spacious with dual aspect open-plan reception and dining room, featuring a separate kitchen. A much sought-after development, located in the heart of the town centre, you'll enjoy easy access to local shops, restaurants, and amenities.

The property also benefits from an allocated parking space, providing peace of mind in this central location. Offered with no onward chain.

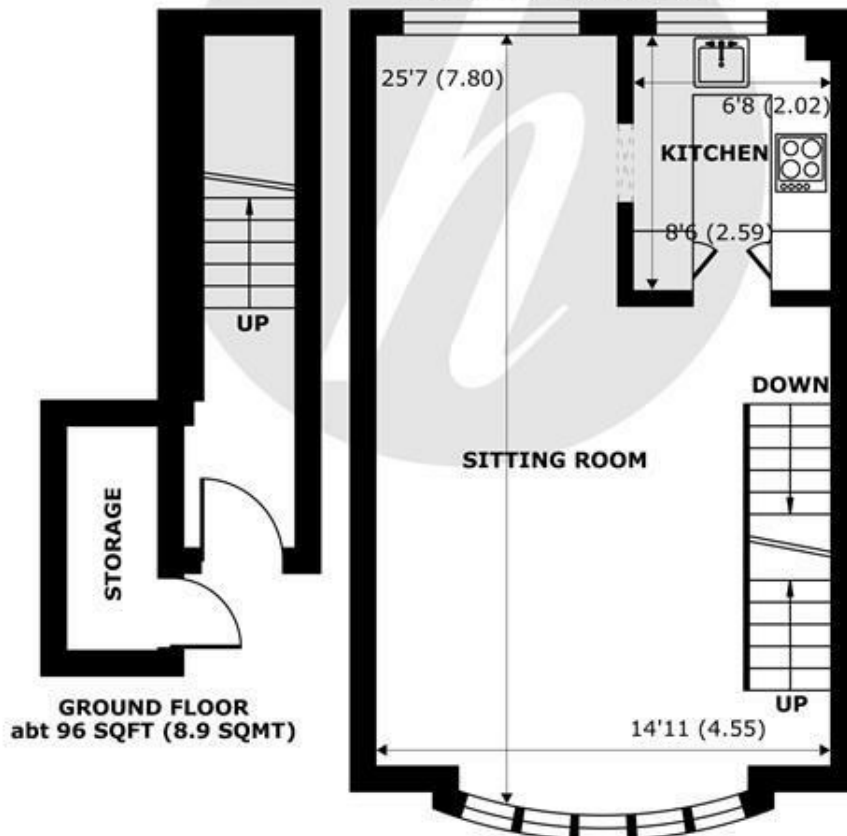


Features

- End of Terraced Two Bedroom Maisonette
- Own Front Door
- Allocated Parking Space
- Town Centre Location
- Dual Aspect Open Plan Reception/ Diner
- Separate Kitchen
- No Onward Chain
- Share of Freehold



SECOND FLOOR
abt 425 SQFT (39.4 SQMT)



FIRST FLOOR
abt 439 SQFT (40.7 SQMT)

Lammas Court, Windsor, SL4

Approximate Internal Area = 791 sq ft / 73.4 sq m (Exclude Outbuildings)

Approximate External Area = 960 sq ft / 89.1 sq m (Exclude Outbuildings)



For identification only - Not to scale
Floor plan produced in accordance with RICS Property Measurement Standards incorporating International Property Measurement Standards (IPMS2 Residential). © nichecom 2024.
Produced for Hardings. REF: 1197240.





11 High Street, Windsor, Berkshire, SL4 1LD,
T: 01753 833 118 | E: info@hardings.co.uk
www.hardings.co.uk

