



HARDINGS



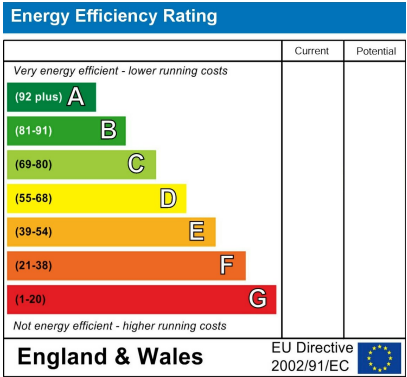
Bexley Street
£2,200 PCM





Nestled in the charming area of Bexley Street, Windsor, this delightful house offers a perfect blend of character and modern living. Spanning 974 square feet, this home features a spacious reception room, fully equipped kitchen, three bedrooms and two bathrooms.

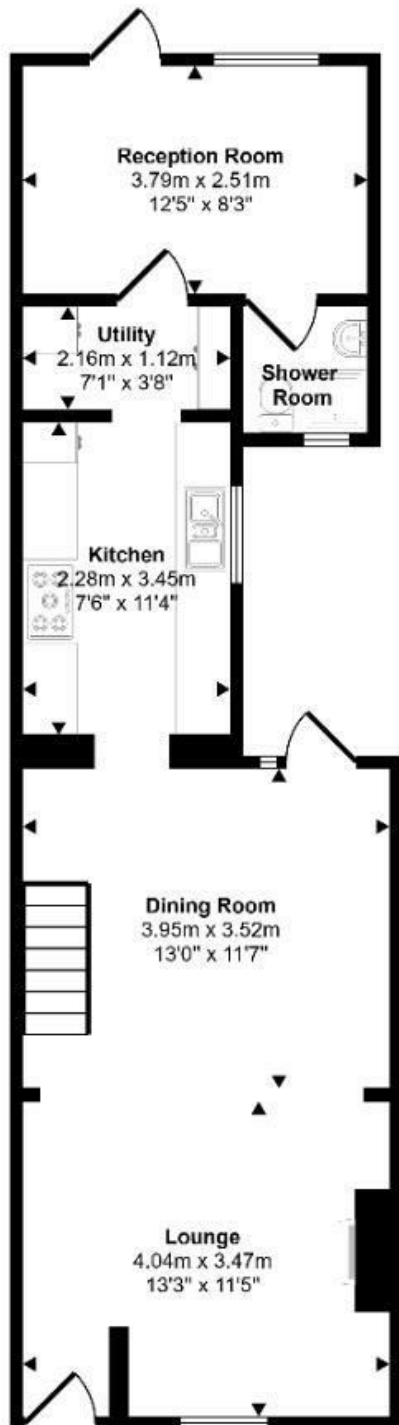
Windsor is renowned for its picturesque surroundings and vibrant community, making this location particularly desirable. Residents can enjoy the nearby amenities, including shops, parks, and excellent transport links, all within easy reach.



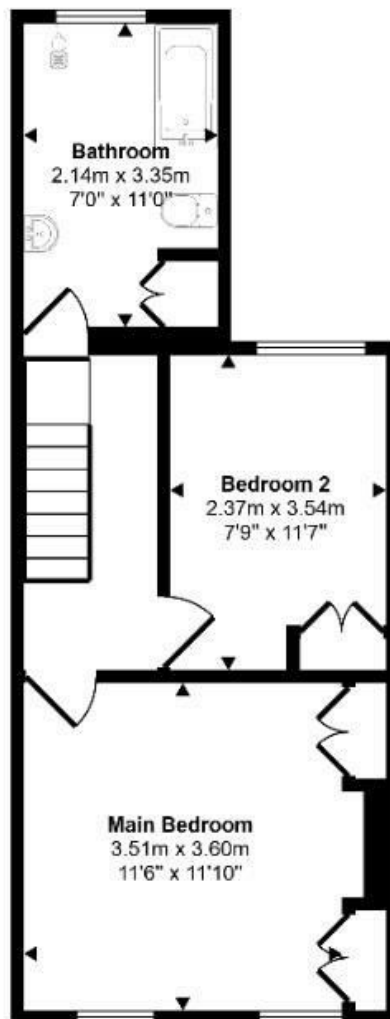
Features

- Sought after Town Centre Location
- Large rear garden with Shed
- Redecorated throughout
- Unfurnished
- Available Now
- Downstairs bedroom/office with en-suite
- Rear access
- Stylish family bathroom with underfloor heating
- Permit Parking Available

Approx Gross Internal Area
89 sq m / 963 sq ft

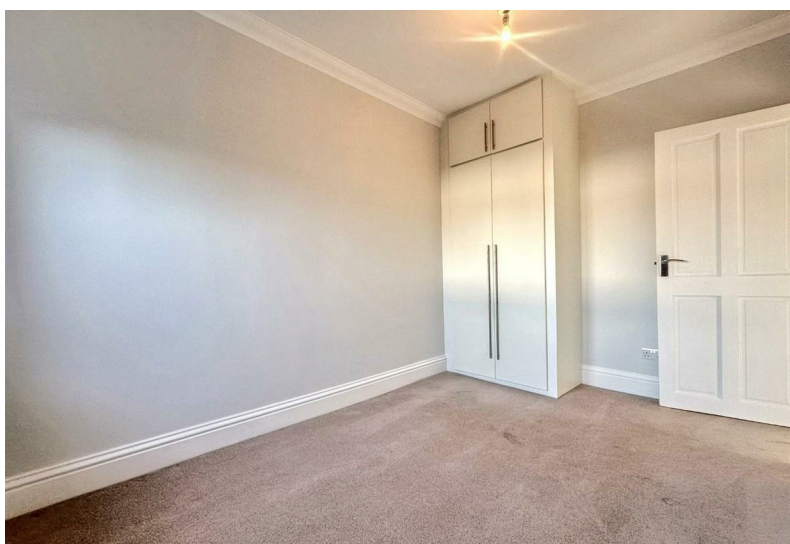
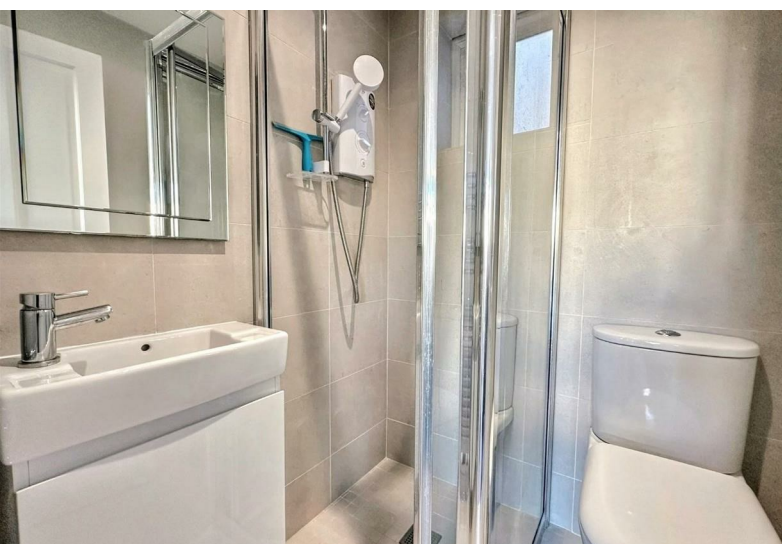
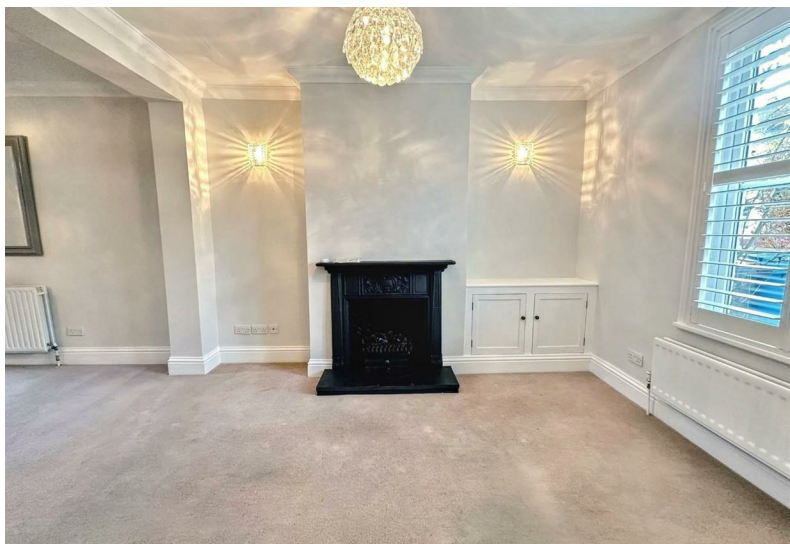


Ground Floor
Approx 53 sq m / 567 sq ft



First Floor
Approx 37 sq m / 396 sq ft

This floorplan is only for illustrative purposes and is not to scale. Measurements of rooms, doors, windows, and any items are approximate and no responsibility is taken for any error, omission or mis-statement. Icons of items such as bathroom suites are representations only and may not look like the real items. Made with Made Snappy 360.



11 High Street, Windsor, Berkshire, SL4 1LD,
T: 01753 833 118 | E: info@hardings.co.uk
www.hardings.co.uk

