



# HARDINGS



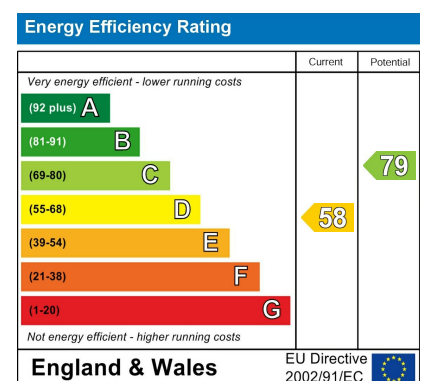
Adelaide Square  
Price Guide £700,000





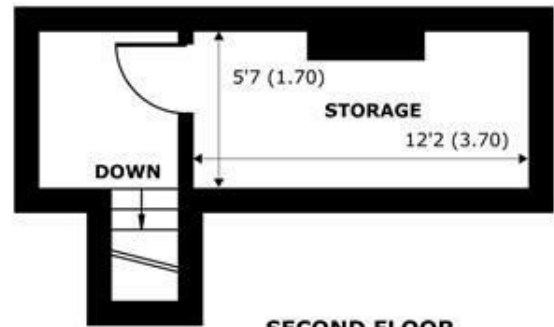
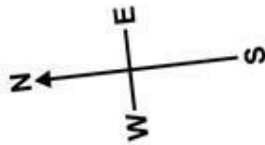


A charming two bedroom Grade II listed period house located in a delightful enclave in the Golden Triangle just a short walk to the Long Walk, local shops, restaurants and cafes and British Rail links to London. In need of some updating, the property further benefits from a delightful west facing private garden, small bistro terrace off the kitchen and permit parking.

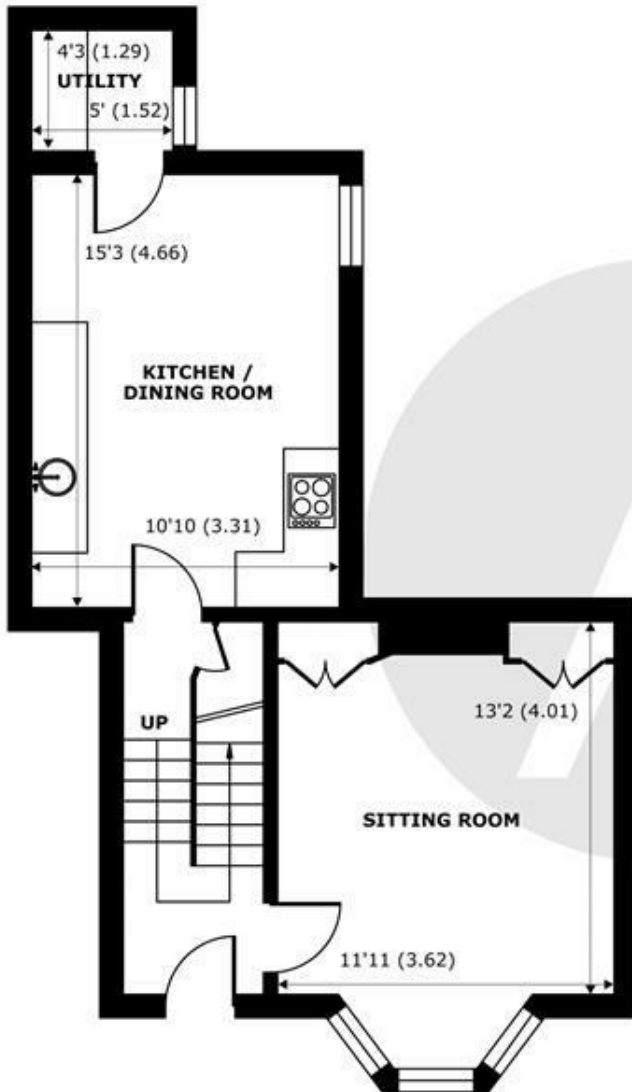


## Features

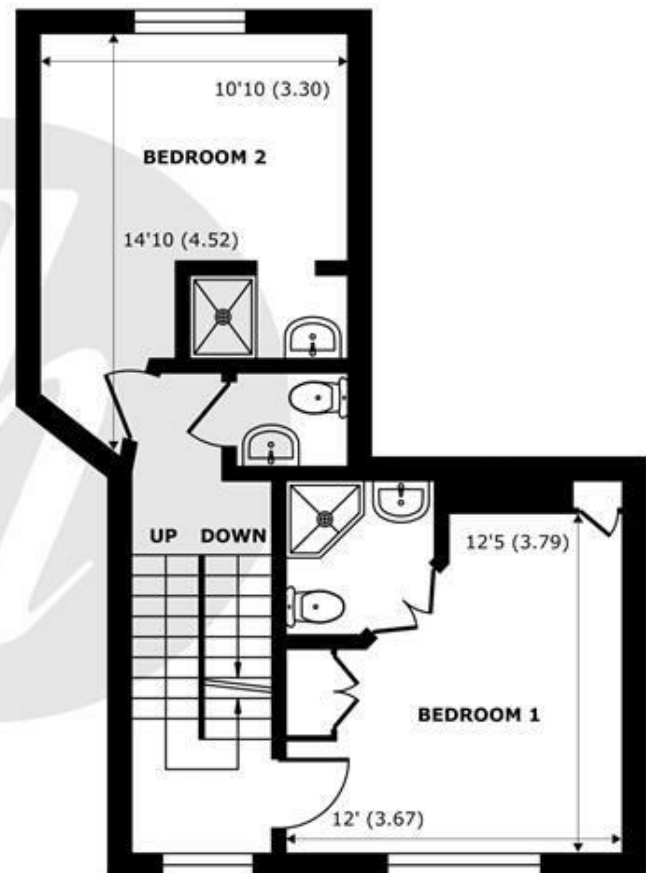
- Grade II Listed House
- Kitchen /Breakfast Room with Access onto Small Courtyard Terrace
- Two En-Suite Bathrooms
- Reception
- West Facing Garden
- Close to The Long Walk, Local Shops & Direct Rail Links to London (Waterloo & Paddington)
- Cloakroom
- Two Bedrooms



**SECOND FLOOR**  
abt 153 SQFT (14.2 SQMT)



**GROUND FLOOR**  
abt 530 SQFT (49.2 SQMT)



**FIRST FLOOR**  
abt 476 SQFT (44.2 SQMT)

## Adelaide Square, Windsor, SL4

Approximate Internal Area = 936 sq ft / 86.9 sq m

Approximate External Area = 1159 sq ft / 107.6 sq m

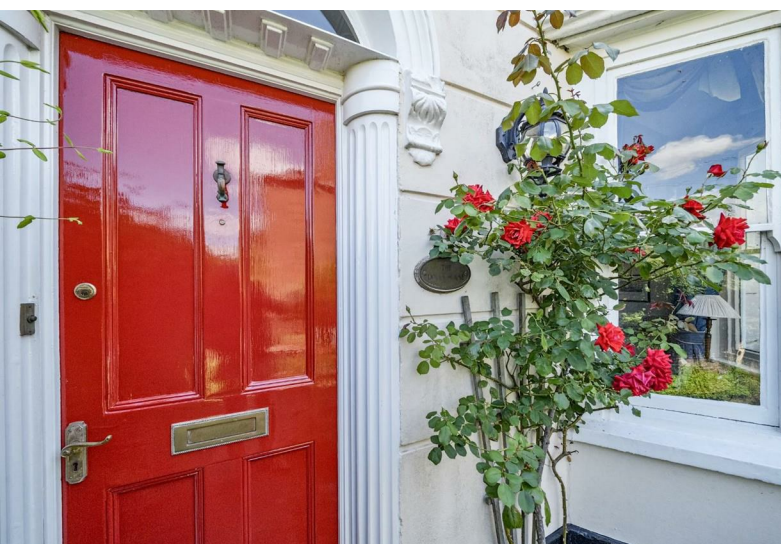
For identification only - Not to scale



Floor plan produced in accordance with RICS Property Measurement 2nd Edition,  
Incorporating International Property Measurement Standards (IPMS2 Residential). © nichecom 2025.  
Produced for Hardings. REF: 1321397







11 High Street, Windsor, Berkshire, SL4 1LD,  
T: 01753 833 118 | E: [info@hardings.co.uk](mailto:info@hardings.co.uk)  
[www.hardings.co.uk](http://www.hardings.co.uk)

