



HARDINGS




Trevelyan Court
Guide Price £425,000



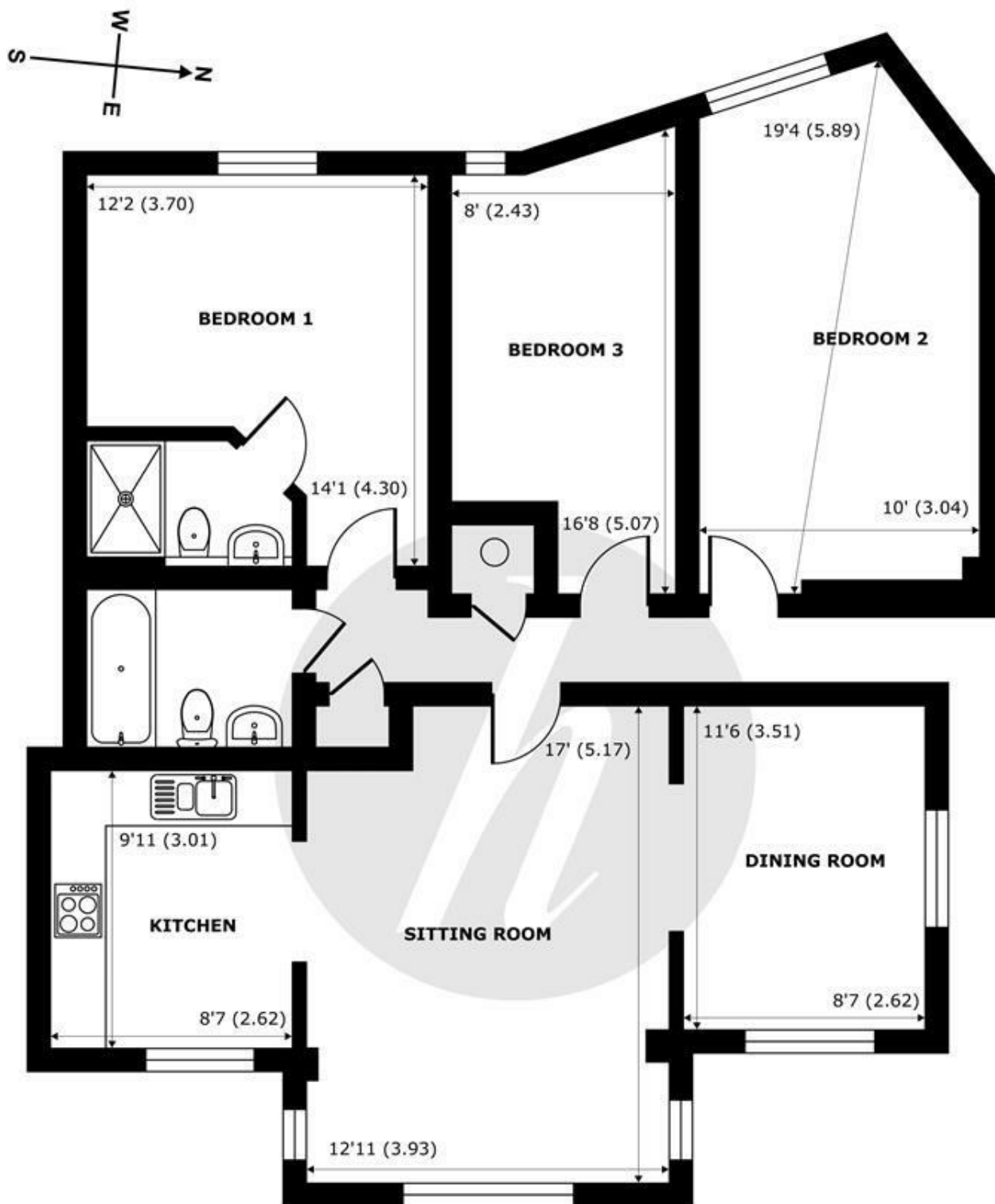


A spacious three bedroom ground floor apartment, conveniently located in the popular gated development Trevelyan Court, within a short distance of Windsor Town Centre. Benefiting from a spacious open plan living area with views over the attractive communal gardens. Further benefits include two bathrooms and no onward chain. The apartment comes with one allocated space and visitor parking.

Energy Efficiency Rating		
	Current	Potential
Very energy efficient - lower running costs		
(92 plus) A		
(81-91) B	81	81
(69-80) C		
(55-68) D		
(39-54) E		
(21-38) F		
(1-20) G		
Not energy efficient - higher running costs		
England & Wales	EU Directive 2002/91/EC 	

Features

- Three Bedrooms
- Private Gated Development
- Allocated Parking Space
- Integrated Kitchen
- EPC Rating B
- Ground Floor Apartment
- No Onward Chain
- Open Plan Living
- Two Bathrooms



Trevelyan Court, Windsor, SL4

Approximate Internal Area = 1041 sq ft / 96.7 sq m

Approximate External Area = 1157 sq ft / 107.4 sq m

For identification only - Not to scale



Floor plan produced in accordance with RICS Property Measurement 2nd Edition, Incorporating International Property Measurement Standards (IPMS2 Residential). © nichecom 2025. Produced for Hardings. REF: 1271263





11 High Street, Windsor, Berkshire, SL4 1LD,
T: 01753 833 118 | E: info@hardings.co.uk
www.hardings.co.uk

