



# HARDINGS




Victor Road  
Price Guide £695,000







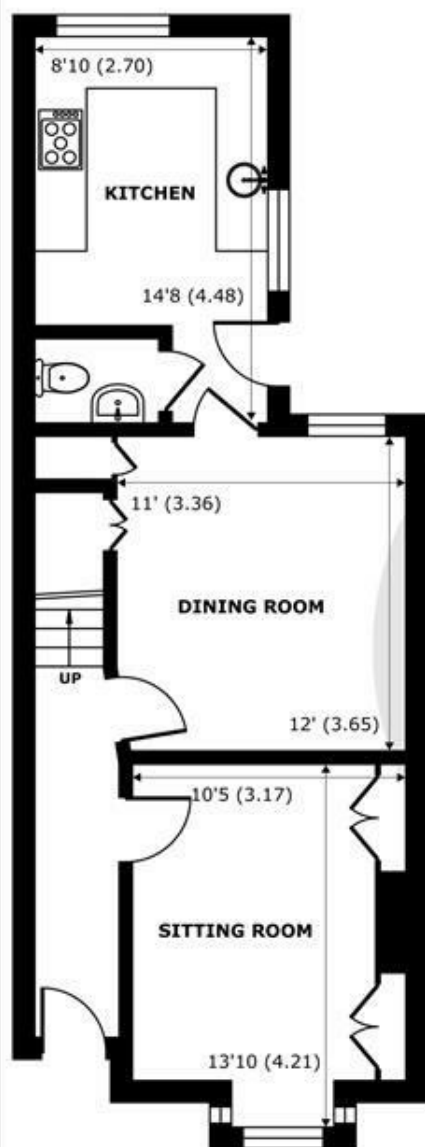
A beautifully presented three bedroom character property situated on a quiet residential road within walking distance to the Long Walk, Great Park and Windsor town centre with its array of shops, bars and restaurants as well as rail connections to London. Refurbished throughout by the current owners, the property further benefits from a separate first floor study, downstairs cloakroom and pretty garden.

Energy Efficiency Rating		
	Current	Potential
Very energy efficient - lower running costs		
(92 plus) <b>A</b>		
(81-91) <b>B</b>		<b>83</b>
(69-80) <b>C</b>		
(55-68) <b>D</b>	<b>59</b>	
(39-54) <b>E</b>		
(21-38) <b>F</b>		
(1-20) <b>G</b>		
Not energy efficient - higher running costs		
<b>England &amp; Wales</b>	EU Directive 2002/91/EC 	

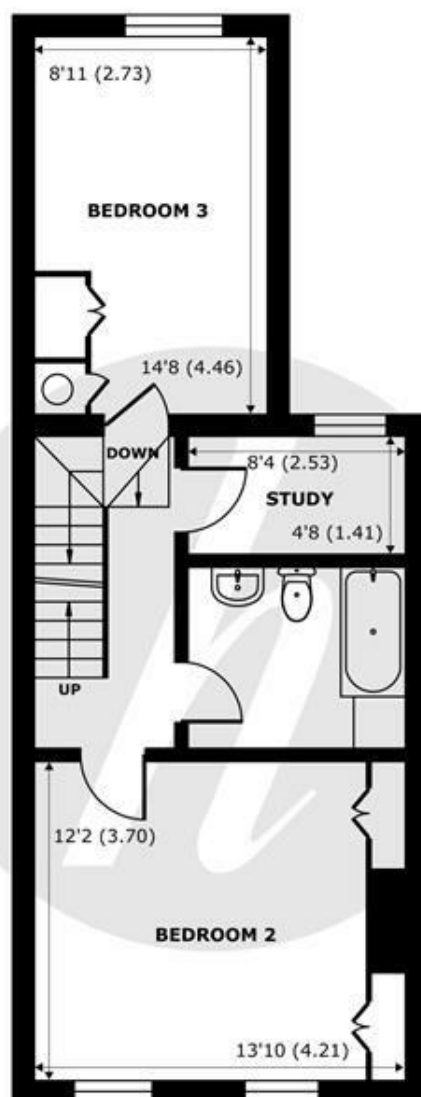
## Features

- Period Property
- Walking Distance to Town Centre
- 3 Bedrooms
- Separate Study
- Close to Great Park and Long Walk
- Contemporary Interior
- Light and Airy
- Pretty Garden
- Permit Parking
- Downstairs Cloakroom

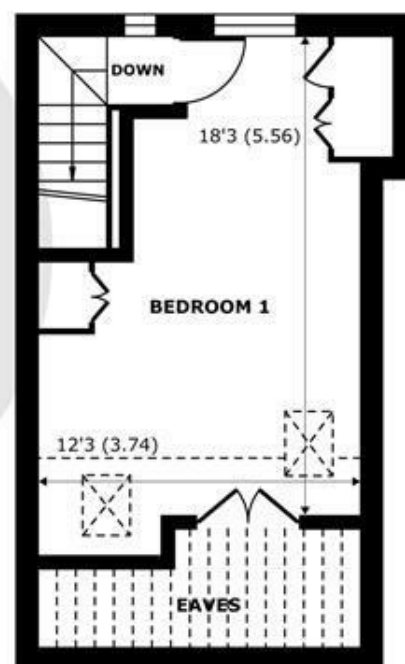
Denotes restricted  
head height



**GROUND FLOOR**  
abt 575 SQFT (53.4 SQMT)



**FIRST FLOOR**  
abt 571 SQFT (53 SQMT)



**SECOND FLOOR**  
abt 354 SQFT (32.8 SQMT)

## Victor Road, Windsor, SL4

Approximate Internal Area = 1163 sq ft / 108 sq m  
Approximate External Area = 1500 sq ft / 139.3 sq m  
Limited Use Area(s) = 89 sq ft / 8.2 sq m

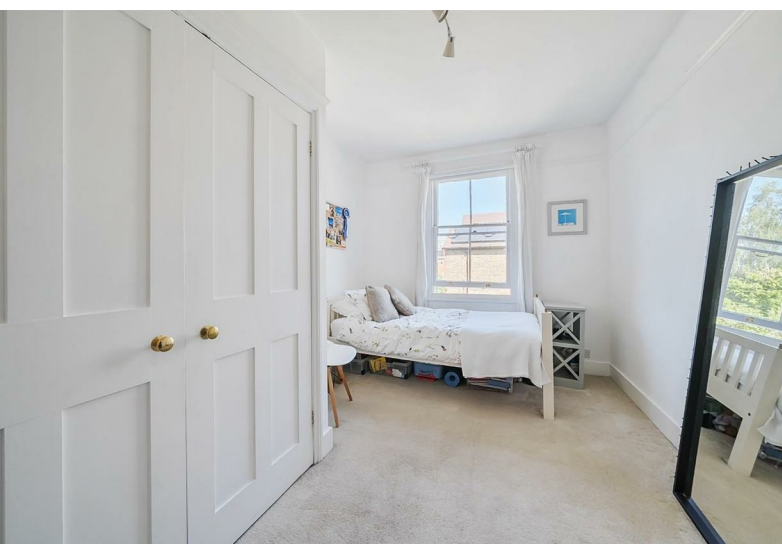
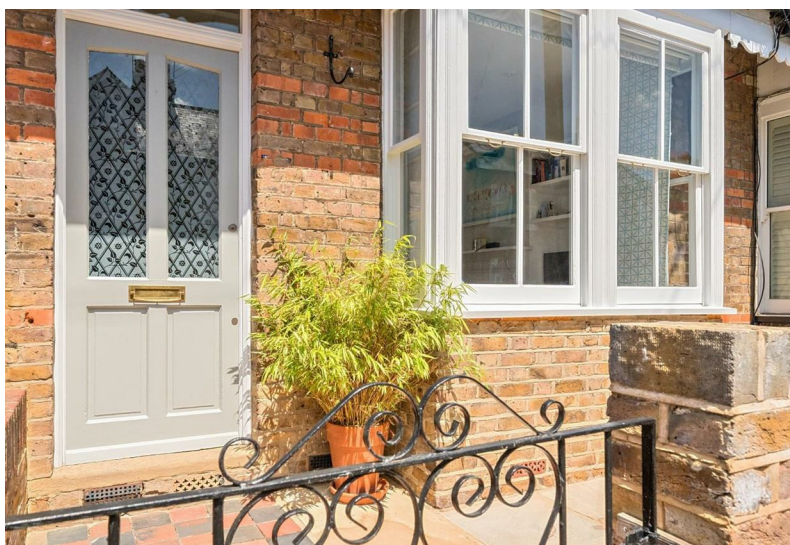
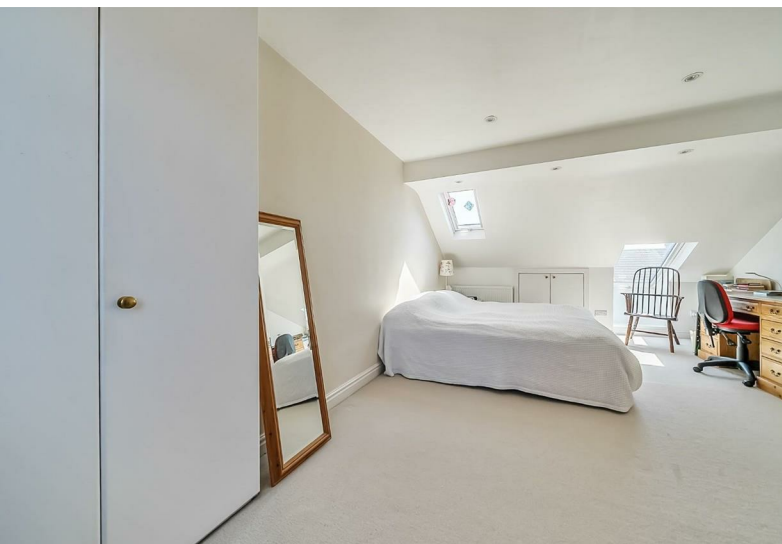
For identification only - Not to scale



Floor plan produced in accordance with RICS Property Measurement 2nd Edition,  
Incorporating International Property Measurement Standards (IPMS2 Residential). © nichecom 2025.  
Produced for Hardings. REF: 1283725







11 High Street, Windsor, Berkshire, SL4 1LD,  
T: 01753 833 118 | E: [info@hardings.co.uk](mailto:info@hardings.co.uk)  
[www.hardings.co.uk](http://www.hardings.co.uk)

