



# HARDINGS




Claremont Road  
Price Guide £2,225,000





An exceptional five bedroom Grade II listed townhouse with ample driveway parking occupying an enviable position in this prime residential location.

Remodelled to create a superb kitchen/dining/living room with floor to ceiling glass doors leading onto an impressive garden, the property benefits further from excellent entertaining space, side access, cloakroom/utility room and garage which is used for storage only.

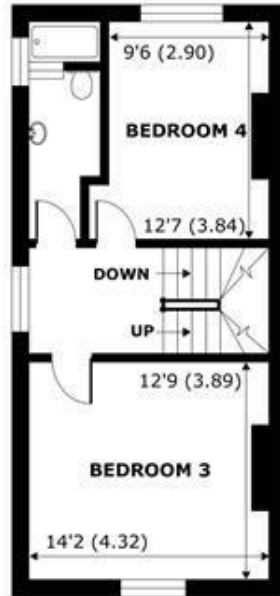
Energy Efficiency Rating		Current	Potential
<i>Very energy efficient - lower running costs</i>			
(92 plus) A			
(81-91) B			
(69-80) C			73
(55-68) D		53	
(39-54) E			
(21-38) F			
(1-20) G			
<i>Not energy efficient - higher running costs</i>			
<b>England &amp; Wales</b>		EU Directive 2002/91/EC 	

## Features

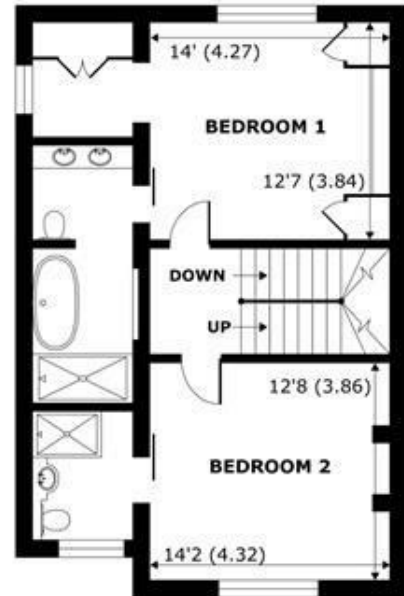
- Semi- Detached Grade II Listed Townhouse
- Prime Residential Location
- Landscaped South Facing Garden
- Principal Bedroom with En-Suite Bathroom & Dressing Area
- Utility Room
- Five Bedrooms
- Driveway Parking for 3-4 Cars
- Garage/Storage Room
- Three Bathrooms (2 x en-suite) & Cloakroom



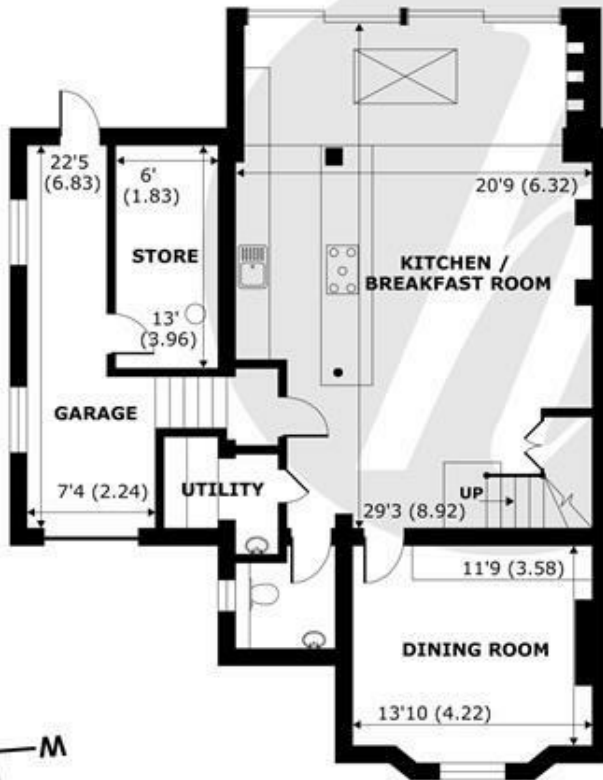
**FOURTH FLOOR**  
abt 310 SQFT (28.7 SQMT)



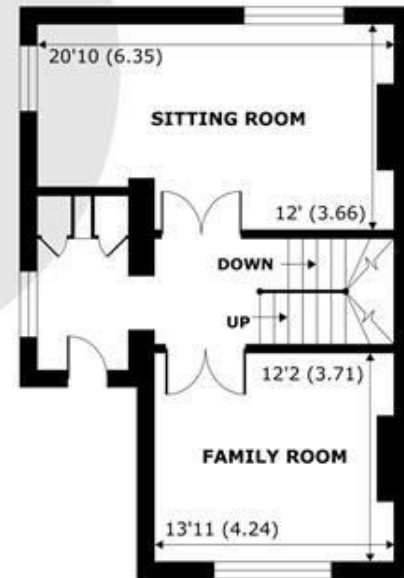
**THIRD FLOOR**  
abt 552 SQFT (51.2 SQMT)



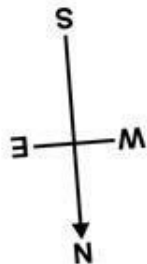
**SECOND FLOOR**  
abt 772 SQFT (71.7 SQMT)



**GROUND FLOOR**  
abt 1265 SQFT (117.5 SQMT)



**FIRST FLOOR**  
abt 684 SQFT (63.5 SQMT)



## Claremont Road, Windsor, SL4

Approximate Internal Area = 2765 sq ft / 256.8 sq m (exclude garage & store)

Approximate External Area = 3261 sq ft / 302.9 sq m (exclude garage & store)

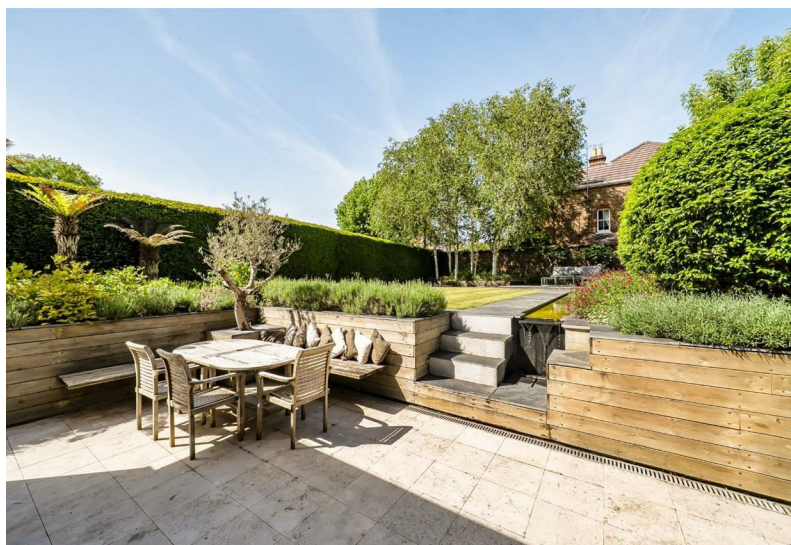
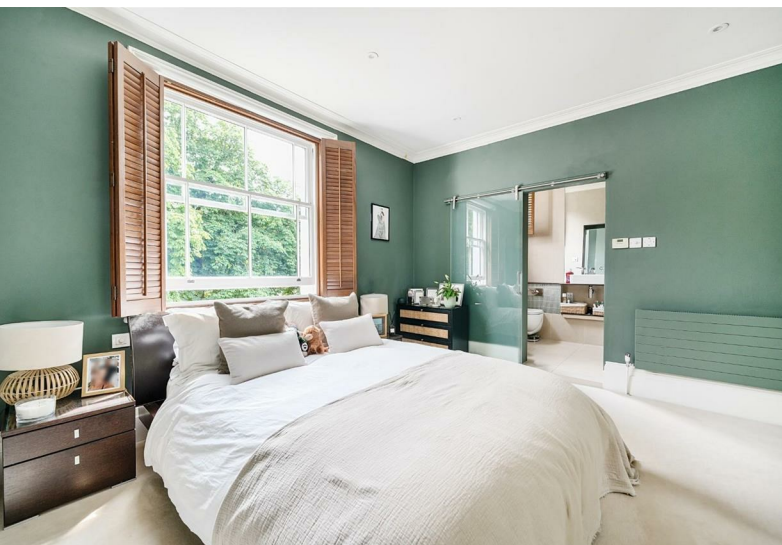
Limited Use Area(s) = 36 sq ft / 3.3 sq m

For identification only - Not to scale



Floor plan produced in accordance with RICS Property Measurement 2nd Edition, Incorporating International Property Measurement Standards (IPMS2 Residential). © nichecom 2025. Produced for Hardings. REF: 115554





11 High Street, Windsor, Berkshire, SL4 1LD,  
T: 01753 833 118 | E: info@hardings.co.uk  
www.hardings.co.uk

