



HARDINGS



Whiteley

Price Guide £700,000

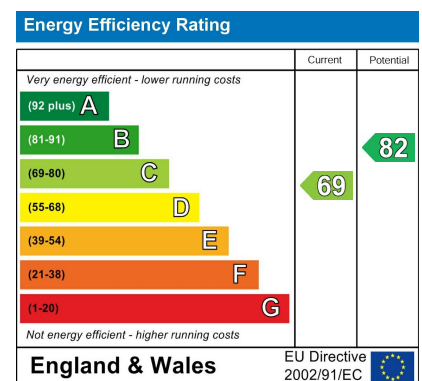




This well presented 4-bedroom semi-detached property with a bright and airy living space benefits from a self- contained annex. Flexible accommodation throughout with ample storage.

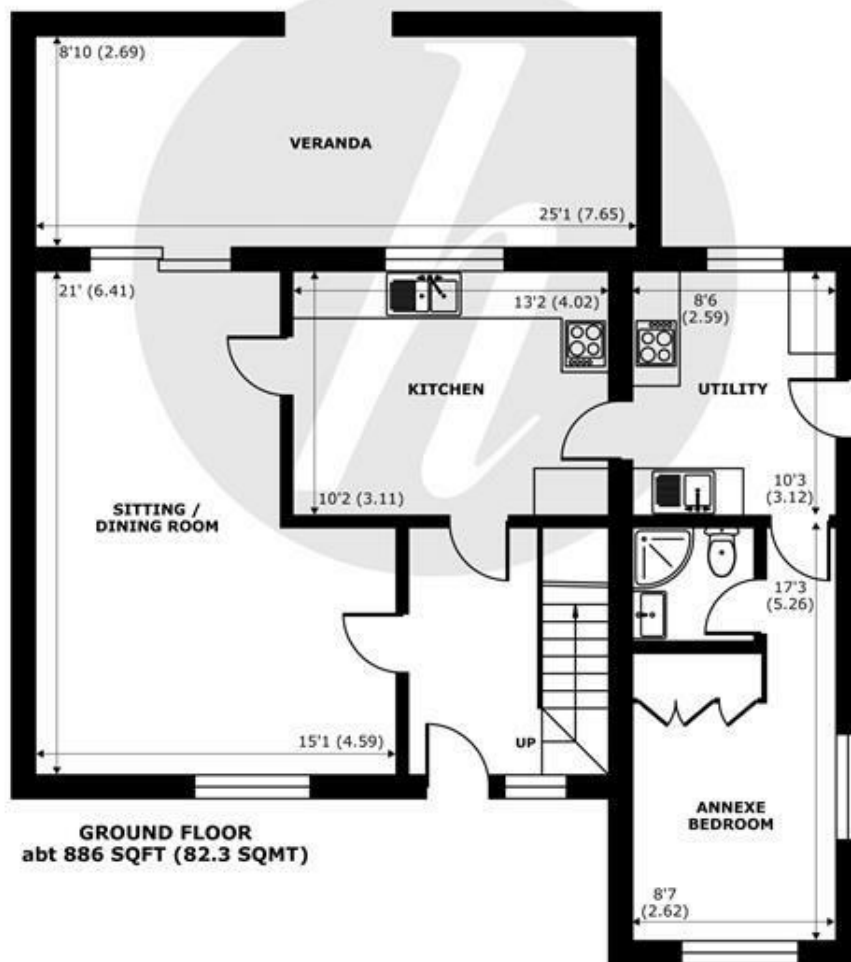
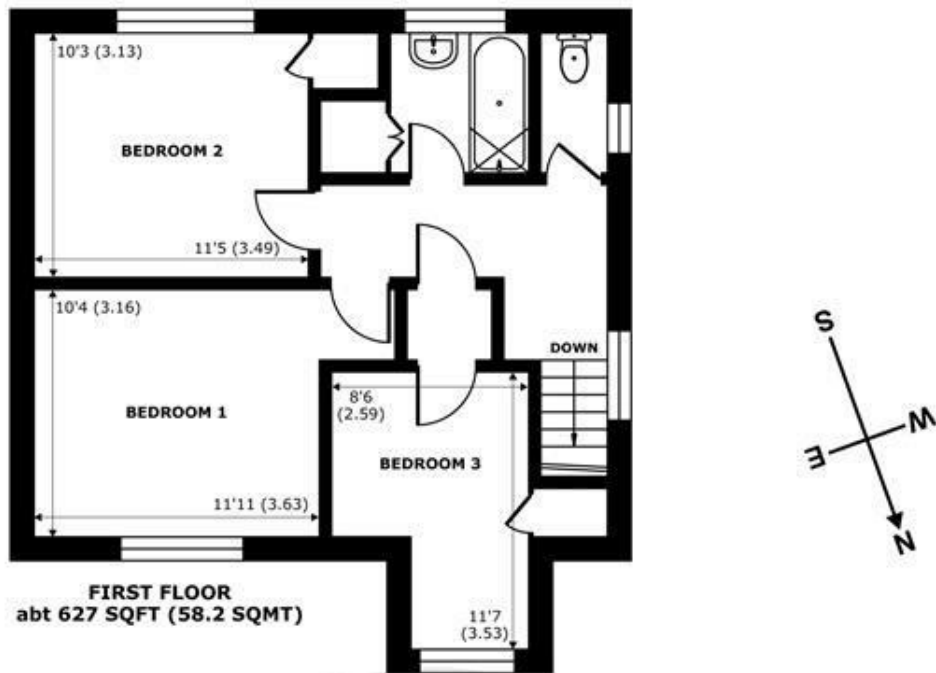
Upstairs, the property offers three good sized bedrooms, with a family bathroom and a separate toilet. Additionally, a converted loft room provides a suitable study, or extra bedroom.

Outside, the home offers a large garden featuring an outdoor undercover area, perfect for entertaining all year round.



Features

- Three Bedrooms
- Large Garden
- Self Contained Annex
- Off- Street Parking
- EPC - C
- Semi-Detached
- Utility Room
- Bonus/Loft Room
- Spacious



Whiteley, Windsor, SL4

Approximate Internal Area = 1286 sq ft / 119.4 sq m

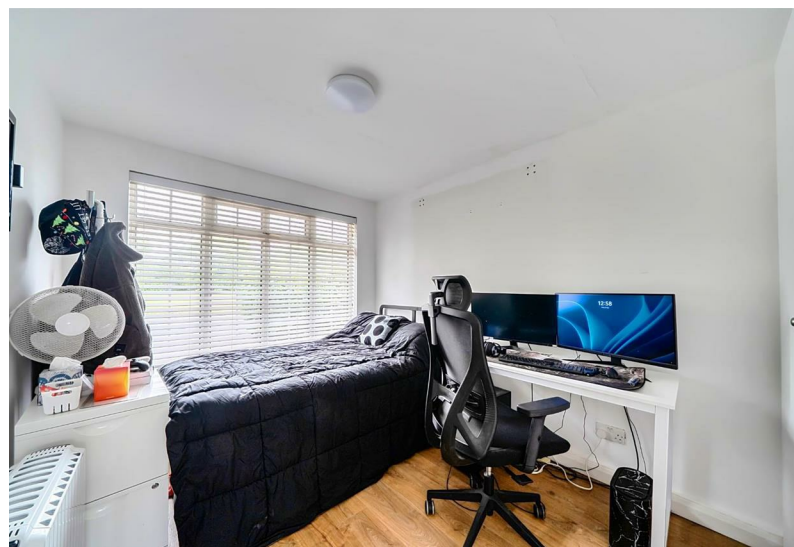
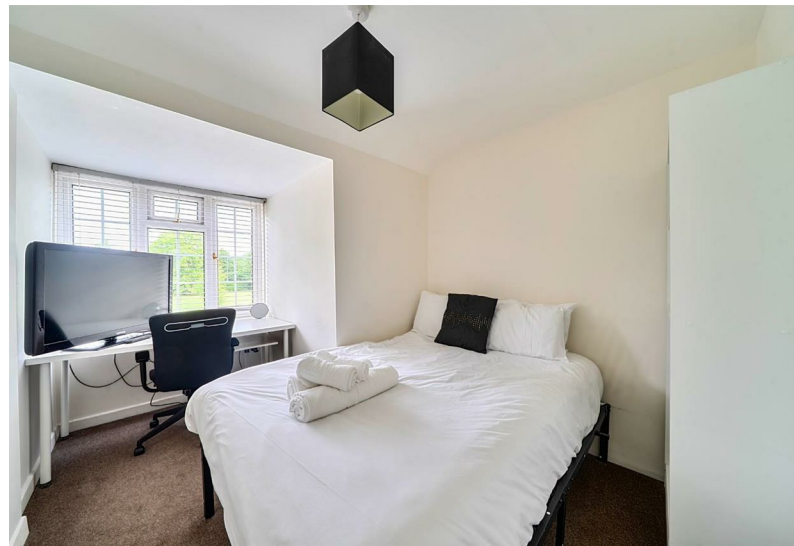
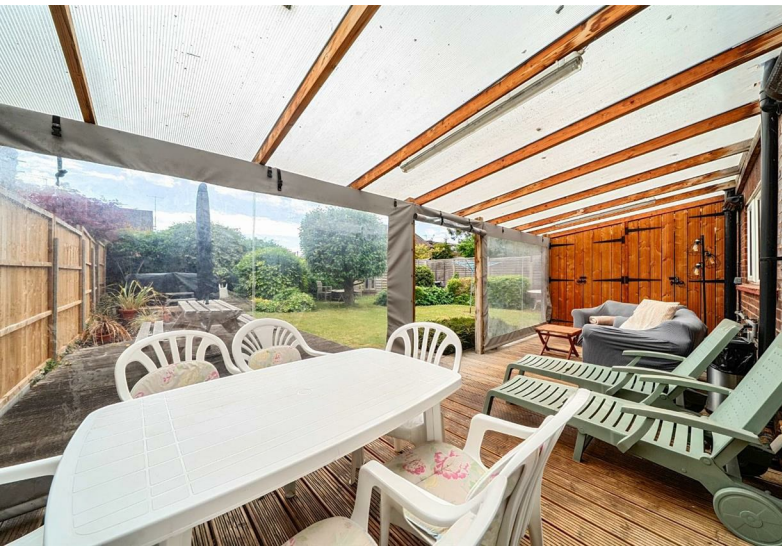
Approximate External Area = 1513 sq ft / 140.5 sq m

For identification only - Not to scale



Floor plan produced in accordance with RICS Property Measurement 2nd Edition, Incorporating International Property Measurement Standards (IPMS2 Residential). © nichecom 2026. Produced for Hardings. REF: 1457589





11 High Street, Windsor, Berkshire, SL4 1LD,
T: 01753 833 118 | E: info@hardings.co.uk
www.hardings.co.uk

