



# HARDINGS



Prince Consort Cottages  
Offers Over £520,000






Delightful Grade II Listed two bedroom cottage, part of a charming development built in the 1850's under the direction of Albert, The Prince Consort. Set in a peaceful traffic free setting overlooking a well kept central green. A few minutes' walk from Windsor town centre, railway station and the Long Walk leading to Windsor Great Park. NO CHAIN.

Energy Efficiency Rating		
	Current	Potential
Very energy efficient - lower running costs		
(92 plus) <b>A</b>		<b>86</b>
(81-91) <b>B</b>		
(69-80) <b>C</b>		
(55-68) <b>D</b>	<b>55</b>	
(39-54) <b>E</b>		
(21-38) <b>F</b>		
(1-20) <b>G</b>		
Not energy efficient - higher running costs		

England & Wales

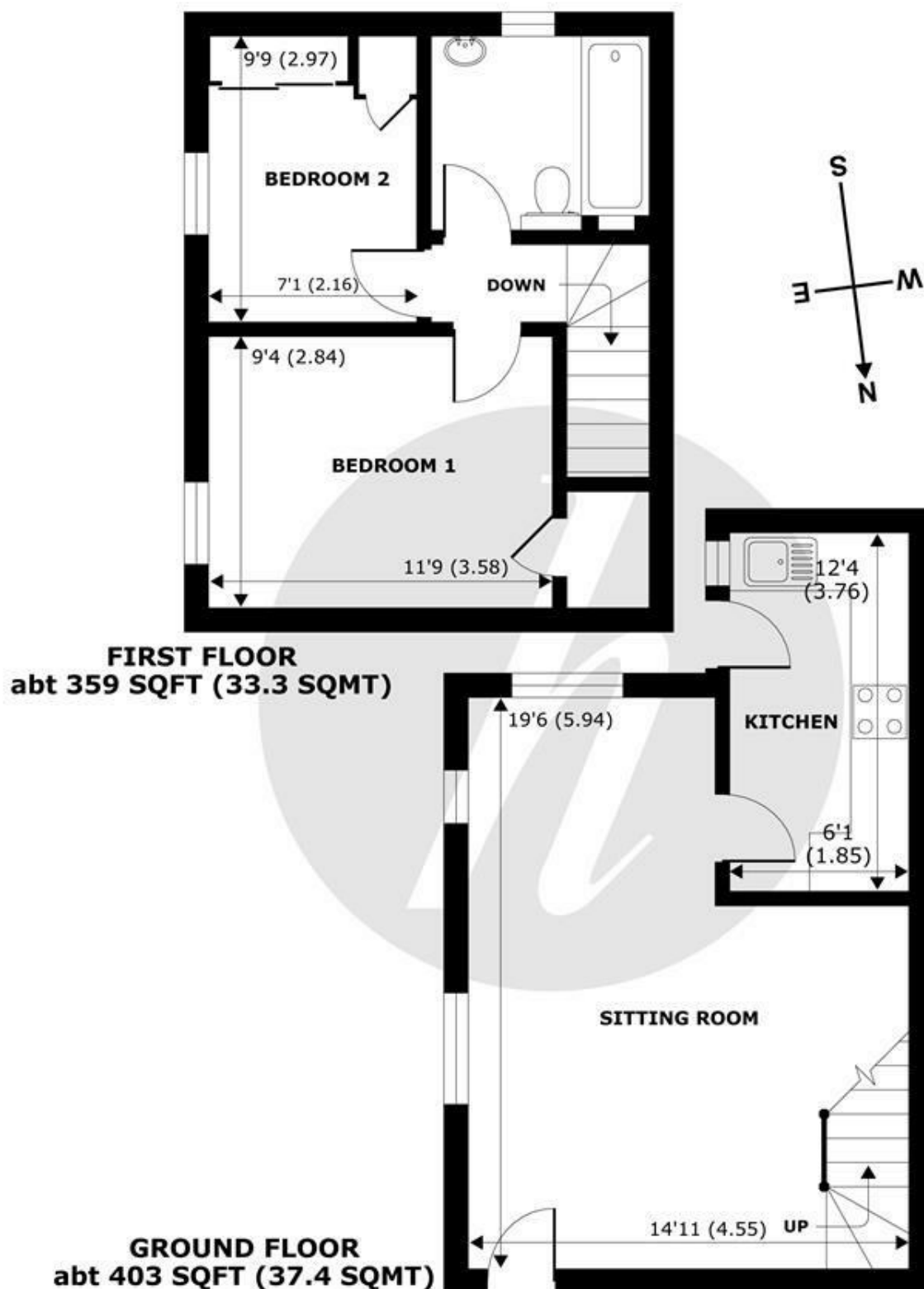
EU Directive  
2002/91/EC



## Features

- Grade II Listed Cottage
- Sitting/dining room
- Moments to Windsor Town Centre
- Potential for Off Street Parking (Subject to Waitlist)
- First Floor Bathroom
- Two Bedrooms
- Courtyard Garden
- Seperate Kitchen
- NO CHAIN

NOT TO SCALE





11 High Street, Windsor, Berkshire, SL4 1LD,  
T: 01753 833 118 | E: [info@hardings.co.uk](mailto:info@hardings.co.uk)  
[www.hardings.co.uk](http://www.hardings.co.uk)

