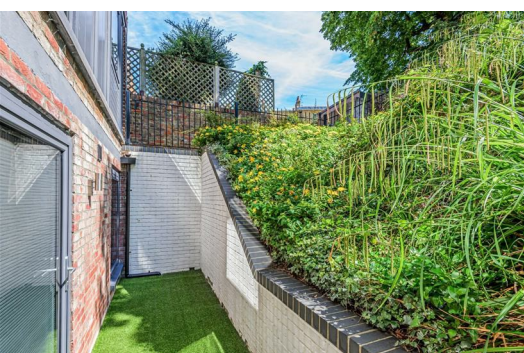




HARDINGS



Sheet Street
£1,400 PCM





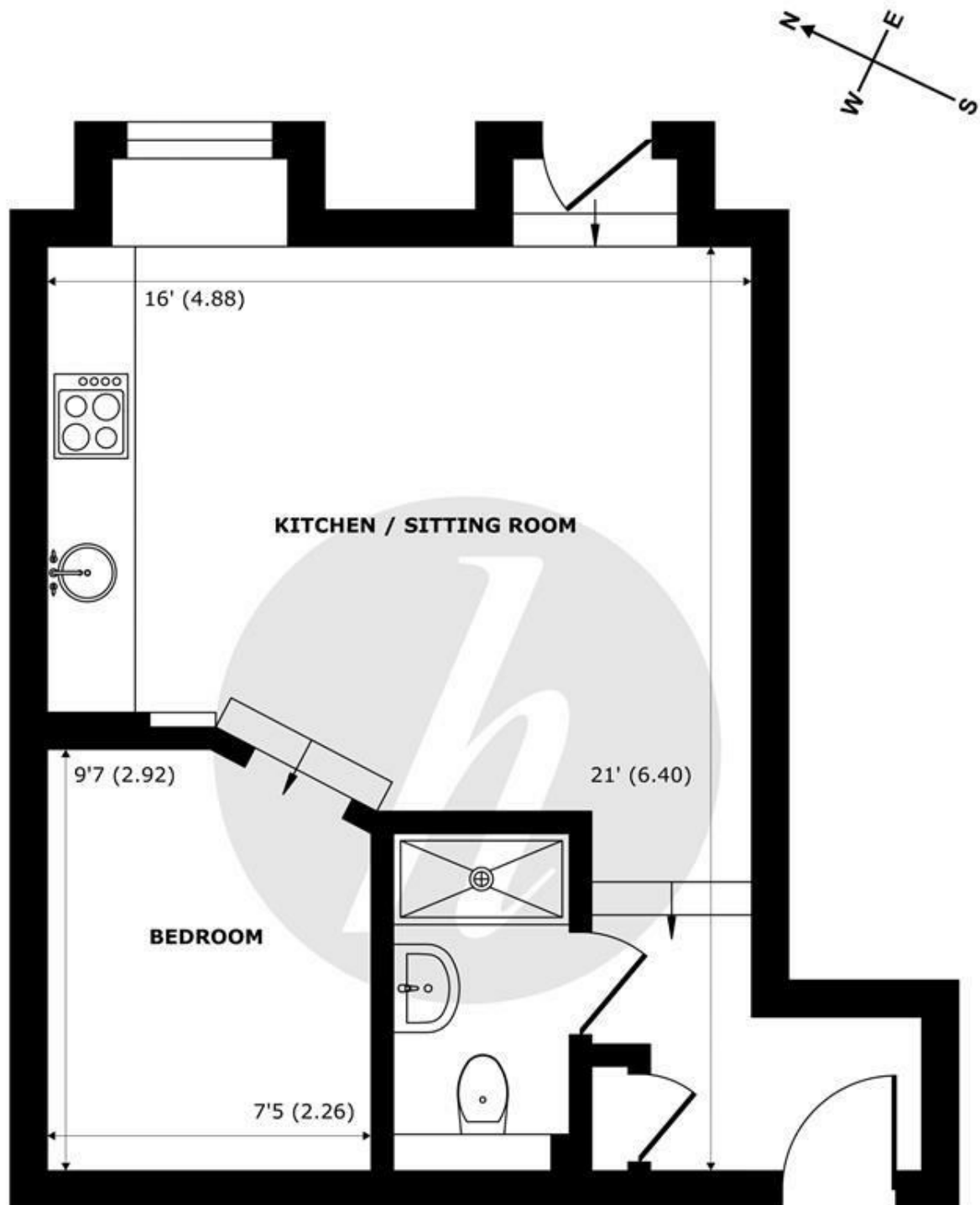
A modern and beautifully presented lower ground floor studio apartment featuring a bright and open kitchen/living room, a raised bedroom area and a private courtyard garden. Located in the heart of the town centre, the property is within a few moments' walk to Windsor Castle and main line rail connections to London.

Offered furnished, available now.

Energy Efficiency Rating		
	Current	Potential
Very energy efficient - lower running costs		
(92 plus) A		
(81-91) B		
(69-80) C		
(55-68) D		
(39-54) E	51	51
(21-38) F		
(1-20) G		
Not energy efficient - higher running costs		
England & Wales		EU Directive 2002/91/EC

Features

- Contemporary Studio Apartment
- Raised Bedroom Area
- Town Centre Location
- Furnished
- Available Now
- Open Plan Kitchen/Living Room
- Separate Rear Entrance
- Communal Garden Area with Bike Store
- Private courtyard garden



LOWER GROUND FLOOR
abt 443 SQFT (41 SQMT)

Sheet Street, Windsor, SL4

Approximate Internal Area = 365 sq ft / 34 sq m

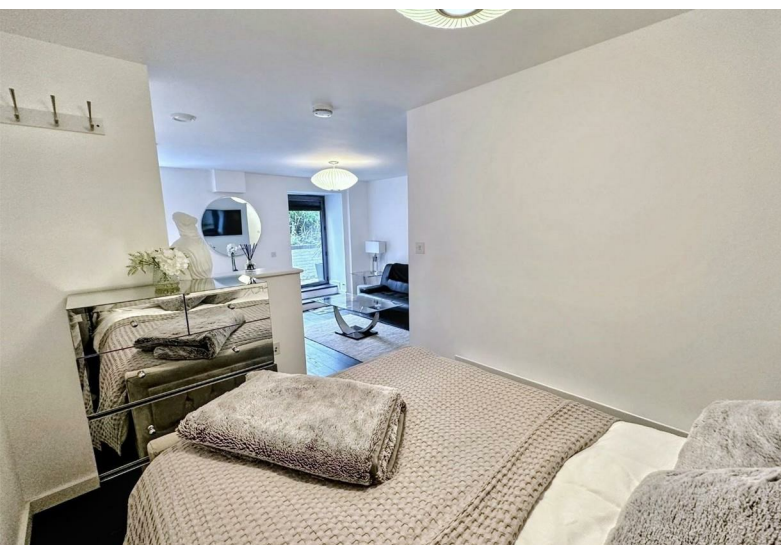
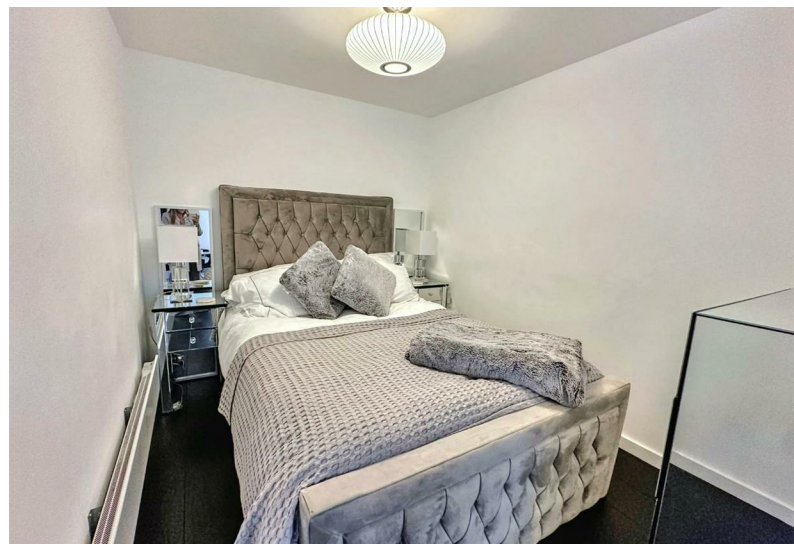
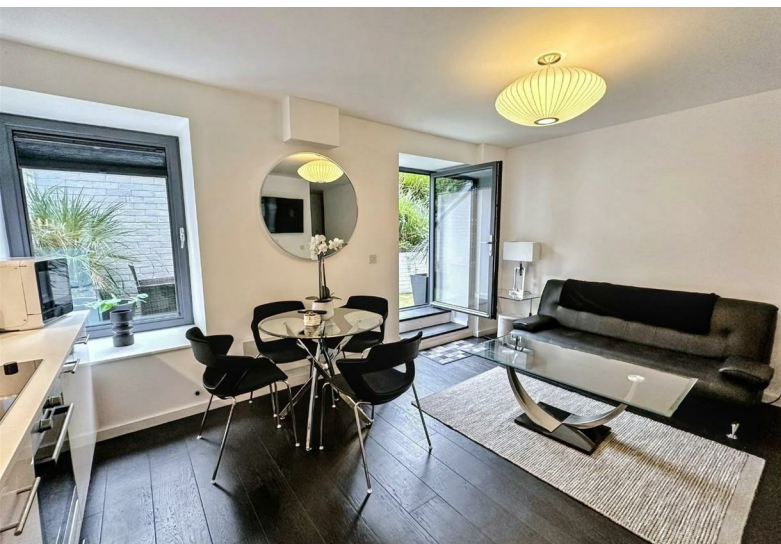
Approximate External Area = 443 sq ft / 41 sq m

For identification only - Not to scale



Floor plan produced in accordance with RICS Property Measurement Standards incorporating International Property Measurement Standards (IPMS2 Residential). © nichecom 2022. Produced for Hardings. REF: 859715





11 High Street, Windsor, Berkshire, SL4 1LD,
T: 01753 833 118 | E: info@hardings.co.uk
www.hardings.co.uk

