



HARDINGS



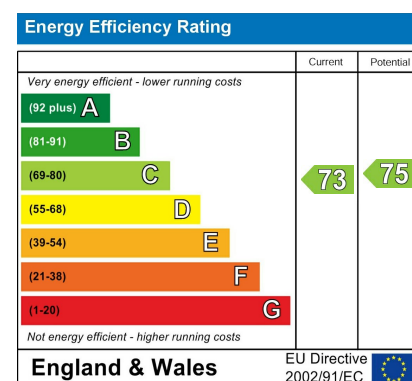
Camperdown House
£1,550 PCM





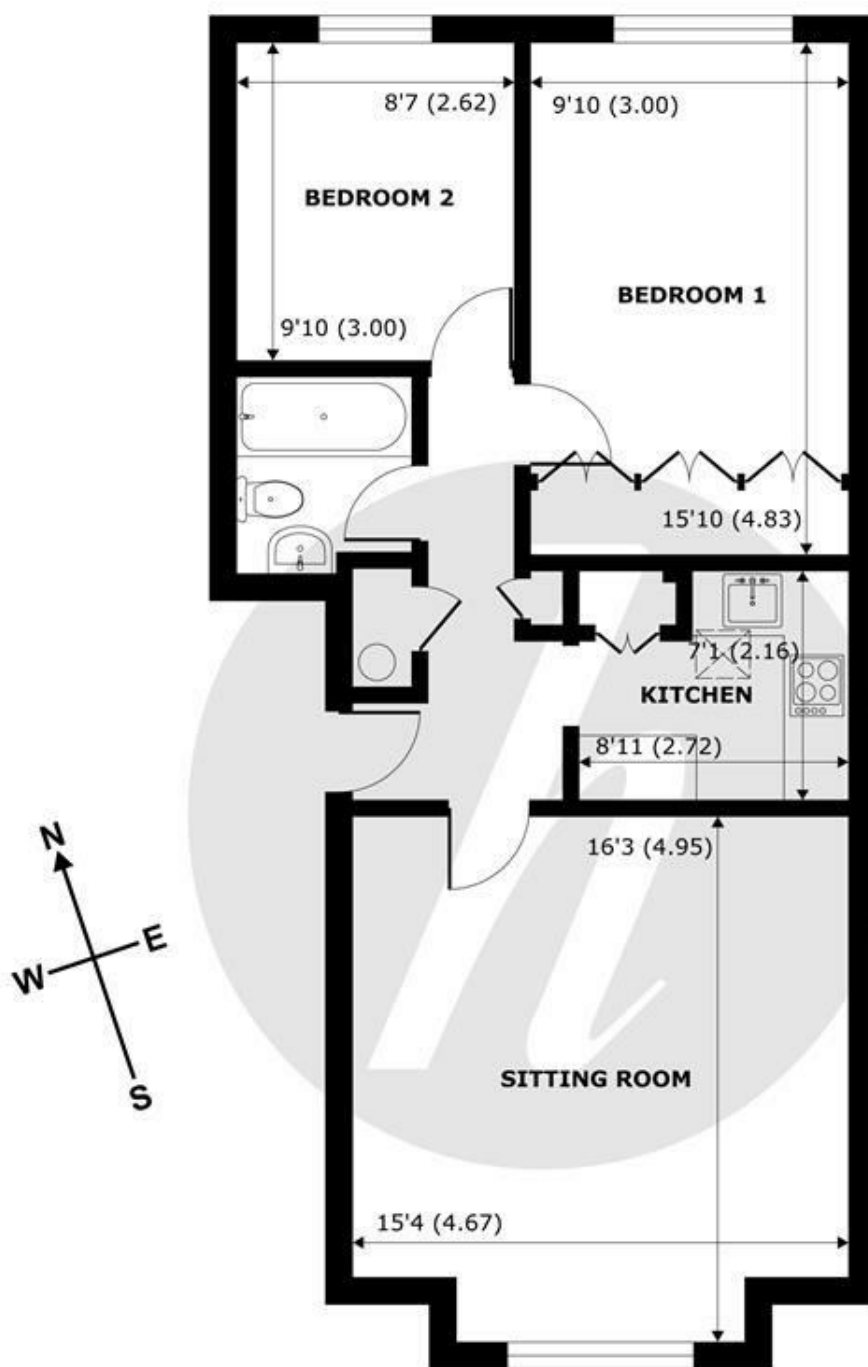
Nestled in the heart of Windsor, Camperdown House on Alma Road presents a delightful opportunity to reside in a modern flat that is both light and airy. This top-floor property boasts two well-proportioned bedrooms, making it ideal for small families, couples, or individuals seeking extra space.

Available Now, offered unfurnished.



Features

- Town Centre Location
- Spacious sitting room
- Top floor
- Garage
- Entry phone system
- 2 bedrooms
- Modern Kitchen
- Communal garden
- Available Now
- Unfurnished



THIRD FLOOR
abt 71 SQFT (763 SQMT)

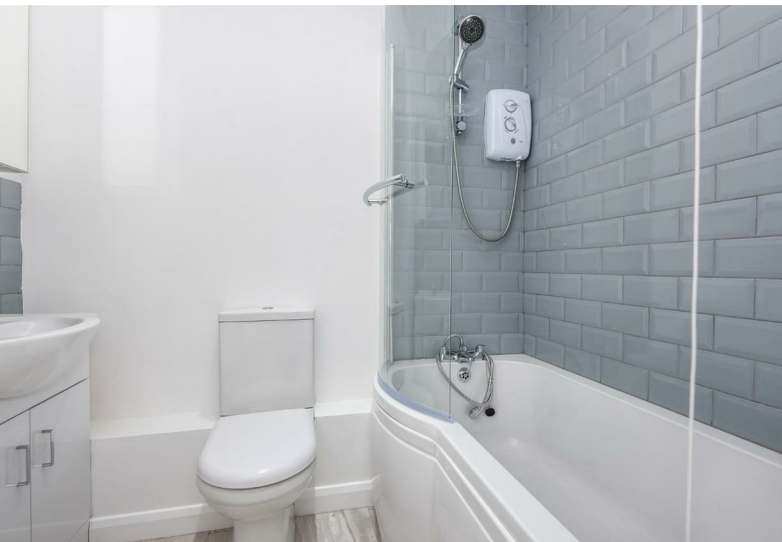
APPROX. GROSS INTERNAL FLOOR AREA 662 SQFT 62 SQM
APPROX. GROSS EXTERNAL FLOOR AREA 763 SQFT 71 SQM

Alma Road, Windsor, SL4



Whilst every attempt has been made to ensure the accuracy of the floor plan contained here, measurements of doors, windows and rooms are approximate and no responsibility is taken for any error, omission or misstatement. These plans are for representation purposes only as defined by RICS Code of Measuring Practice and should be used as such by any prospective purchaser. Specifically no guarantee is given on the total square footage of the property if quoted on this plan. Any figure given is for initial guidance only and should not be relied on as a basis of valuation.

Copyright nichecom.co.uk 2018 Produced for Hardings ref. 369134



11 High Street, Windsor, Berkshire, SL4 1LD,
T: 01753 833 118 | E: info@hardings.co.uk
www.hardings.co.uk

