



# HARDINGS



Dedworth Road  
Offers Over £500,000







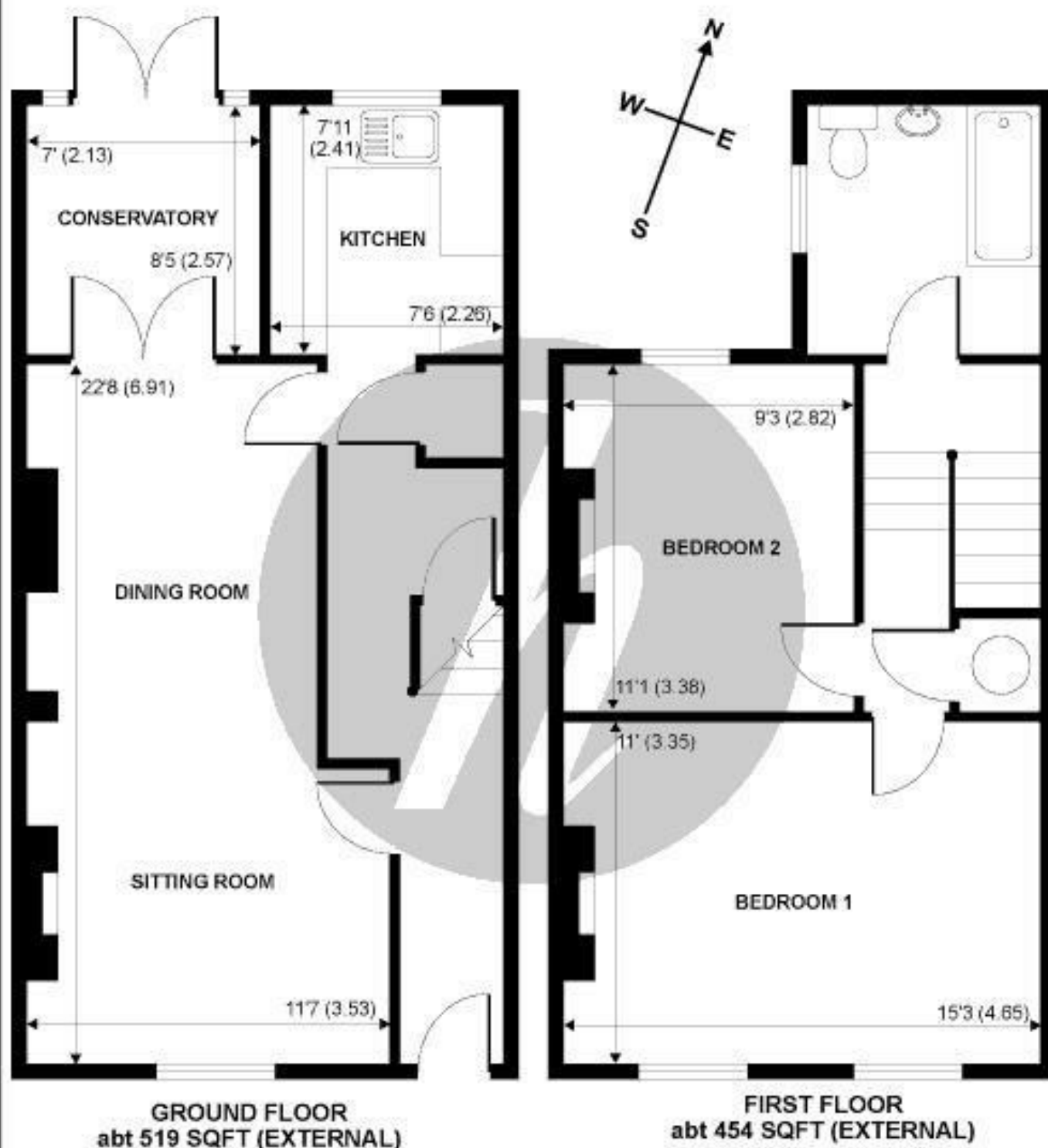
A stylishly renovated two bedroom Victorian property located within a short distance of Windsor Town Centre, local amenities and good transport links. The ground floor features a spacious open-plan double reception room and a sleek, contemporary kitchen/breakfast room, leading out to a landscaped rear garden designed for low-maintenance outdoor living. With two well-proportioned bedrooms and a stylish family bathroom complete with a walk-in shower and freestanding bath.

Energy Efficiency Rating		
	Current	Potential
Very energy efficient - lower running costs		
(92 plus) A		83
(81-91) B		
(69-80) C		
(55-68) D	61	
(39-54) E		
(21-38) F		
(1-20) G		
Not energy efficient - higher running costs		
England & Wales		EU Directive 2002/91/EC

## Features

- Renovated Victorian Terraced House
- Integrated Kitchen with NEFF Appliances
- Beautifully Finished Throughout
- Landscaped Garden
- Open-plan Double Reception Room
- Abundance of Period Features
- Potential to Extend (STPP)
- Walking Distance to Shops, Go2Gate Minibus Service and Mainline Rail Links to London

NOT TO SCALE



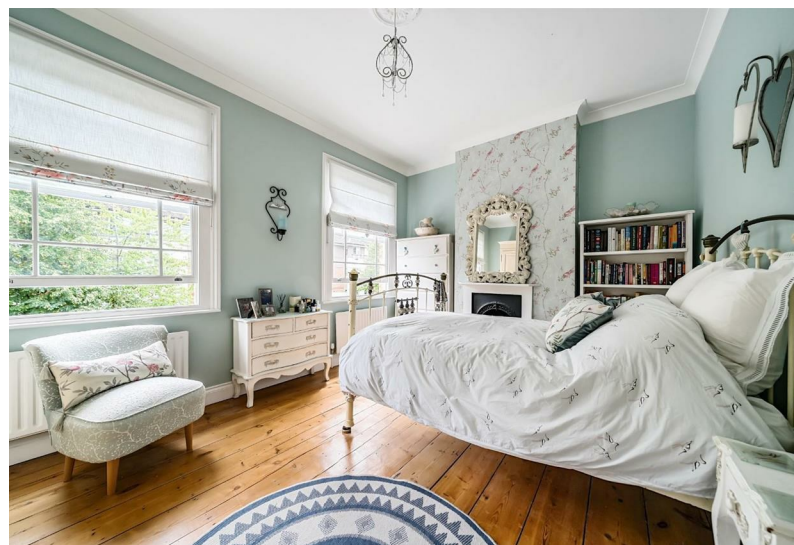
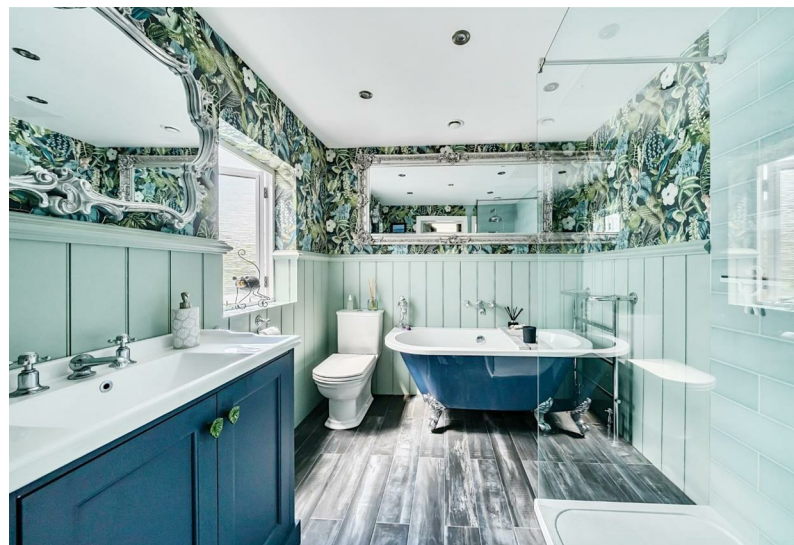
## Dedworth Road



Whilst every attempt has been made to ensure the accuracy of the floor plans contained here, measurements of doors, windows and rooms are approximate and no responsibility is taken for any error, omission or mis-statement. These plans are for representation purposes only as defined by RICS Code of Measuring Practice and should be used as such by any prospective purchaser. The services, systems and appliances listed in this specification have not been tested by Hardings and no guarantee as to their operating ability or their efficiency can be given.

Copyright Hardings 2005 Supplied by [www.nichecom.co.uk](http://www.nichecom.co.uk) ref. 05-14027





11 High Street, Windsor, Berkshire, SL4 1LD,  
T: 01753 833 118 | E: [info@hardings.co.uk](mailto:info@hardings.co.uk)  
[www.hardings.co.uk](http://www.hardings.co.uk)

