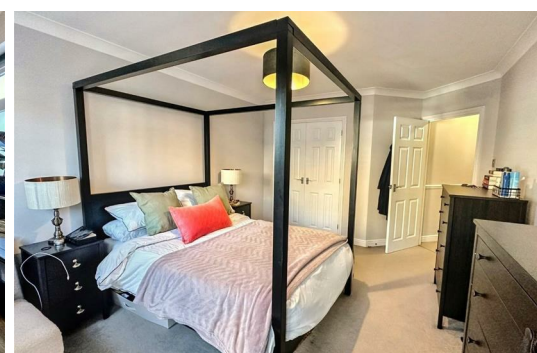




HARDINGS




Knights Place
£1,650 PCM





A beautifully presented ground floor two bedroom apartment in the sought after Knights Place development. This apartment is situated in town centre location, with easy access to local amenities and public transport into London. This property benefits from its own private entrance, allocated parking and Juliette balcony's to both bedrooms.

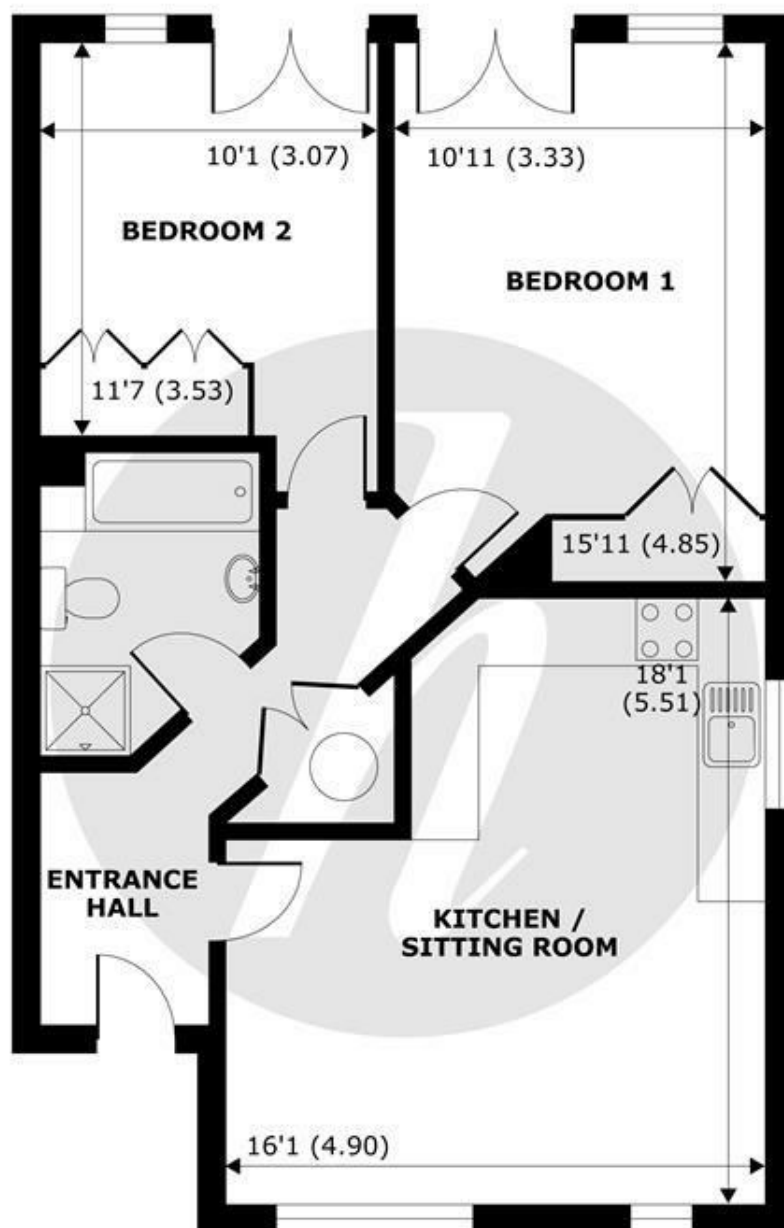
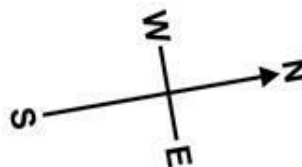
Available early December, offered unfurnished

Energy Efficiency Rating		
	Current	Potential
Very energy efficient - lower running costs		
(92 plus) A		
(81-91) B		
(69-80) C		72
(55-68) D	56	
(39-54) E		
(21-38) F		
(1-20) G		
Not energy efficient - higher running costs		
England & Wales	EU Directive 2002/91/EC 	

Features

- Two bedroom apartment
- Spacious and bright
- Allocated Underground parking space
- Unfurnished
- Visitors Parking on-site
- Modern throughout
- Town centre location
- Gated development
- Fitted wardrobes
- Open plan kitchen-living area

NOT TO SCALE



GROUND FLOOR
abt 808 SQFT (75 SQMT)

APPROX. GROSS EXTERNAL FLOOR AREA 808 SQFT 75 SQM

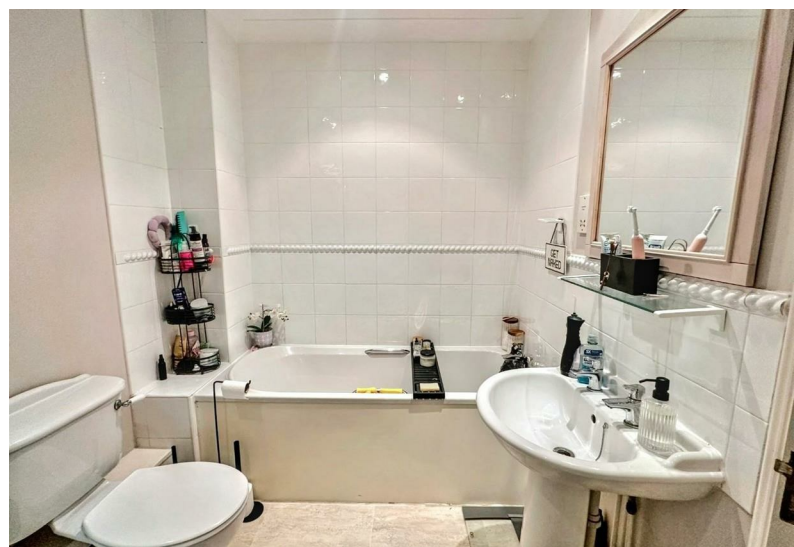
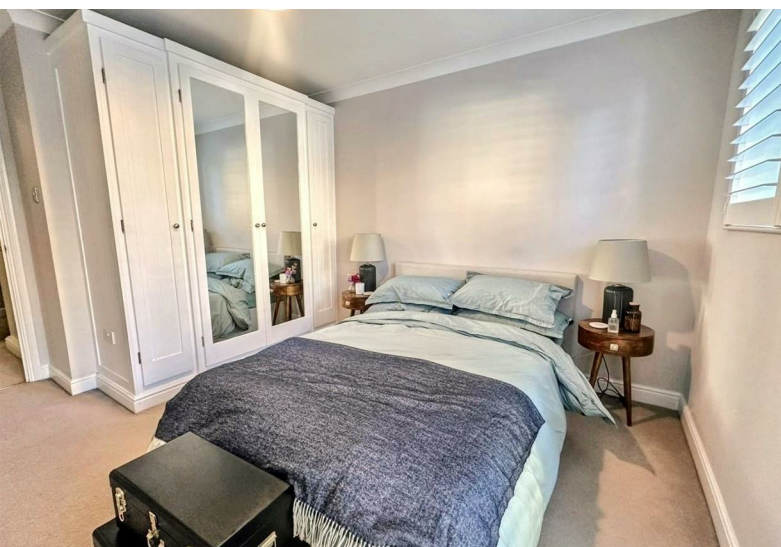
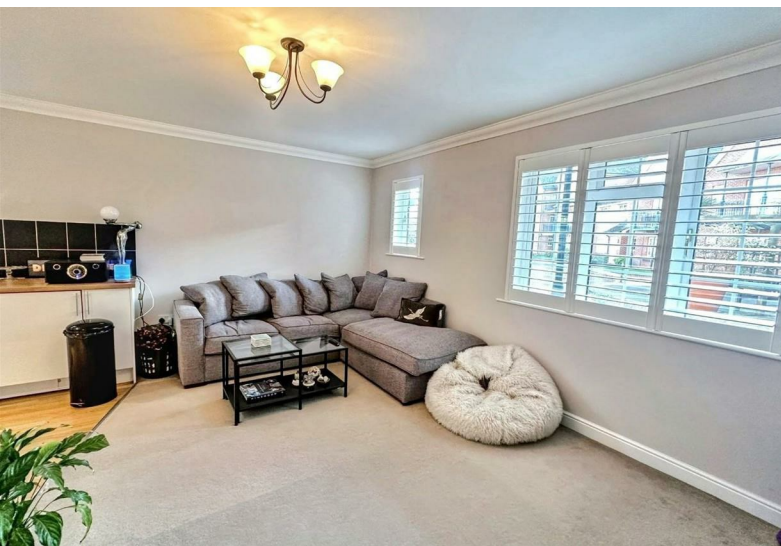
St Leonards Road, Windsor, SL4



HARDINGS

Whilst every attempt has been made to ensure the accuracy of the floor plan contained here, measurements of doors, windows and rooms are approximate and no responsibility is taken for any error, omission or misstatement. These plans are for representation purposes only as defined by RICS Code of Measuring Practice and should be used as such by any prospective purchaser. Specifically no guarantee is given on the total square footage of the property if quoted on this plan. Any figure given is for initial guidance only and should not be relied on as a basis of valuation.

Copyright nichecom.co.uk 2014 Produced for Hardings ref. 690866



11 High Street, Windsor, Berkshire, SL4 1LD,
T: 01753 833 118 | E: info@hardings.co.uk
www.hardings.co.uk

