



HARDINGS

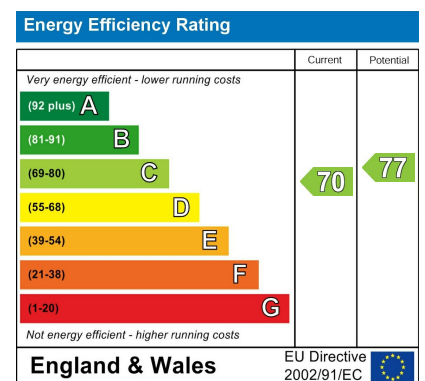


Fountain Gardens
£1,700 PCM





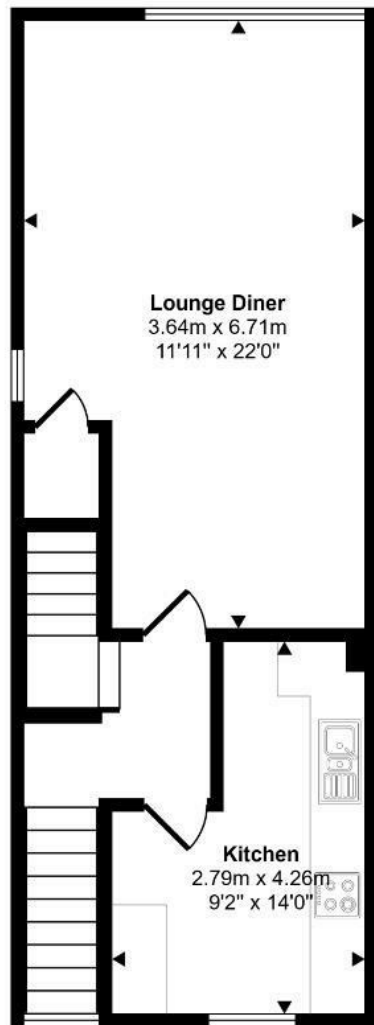
A spacious two bedroom maisonette in a garden style development located opposite the Long Walk and within walking distance of the town centre. Newly painted throughout, this property comprises ground floor entrance lobby, living room, kitchen, two double bedrooms and a bathroom. Council Tax Band E. EPC:C. Garage. Unfurnished.



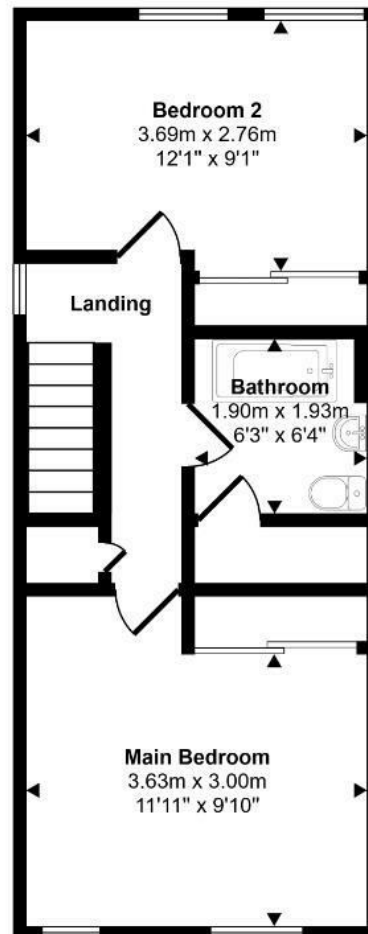
Features

- Two Bedroom Maisonette
- Garage
- Close to the Long Walk
- Spacious
- Unfurnished
- Council Tax Band E

Approx Gross Internal Area
77 sq m / 833 sq ft



First Floor
Approx 41 sq m / 439 sq ft



second Floor
Approx 37 sq m / 394 sq ft

This floorplan is only for illustrative purposes and is not to scale. Measurements of rooms, doors, windows, and any items are approximate and no responsibility is taken for any error, omission or mis-statement. Icons of items such as bathroom suites are representations only and may not look like the real items. Made with Made Snappy 360.



11 High Street, Windsor, Berkshire, SL4 1LD,
T: 01753 833 118 | E: info@hardings.co.uk
www.hardings.co.uk

