



HARDINGS




Hatton Court
£1,600 PCM





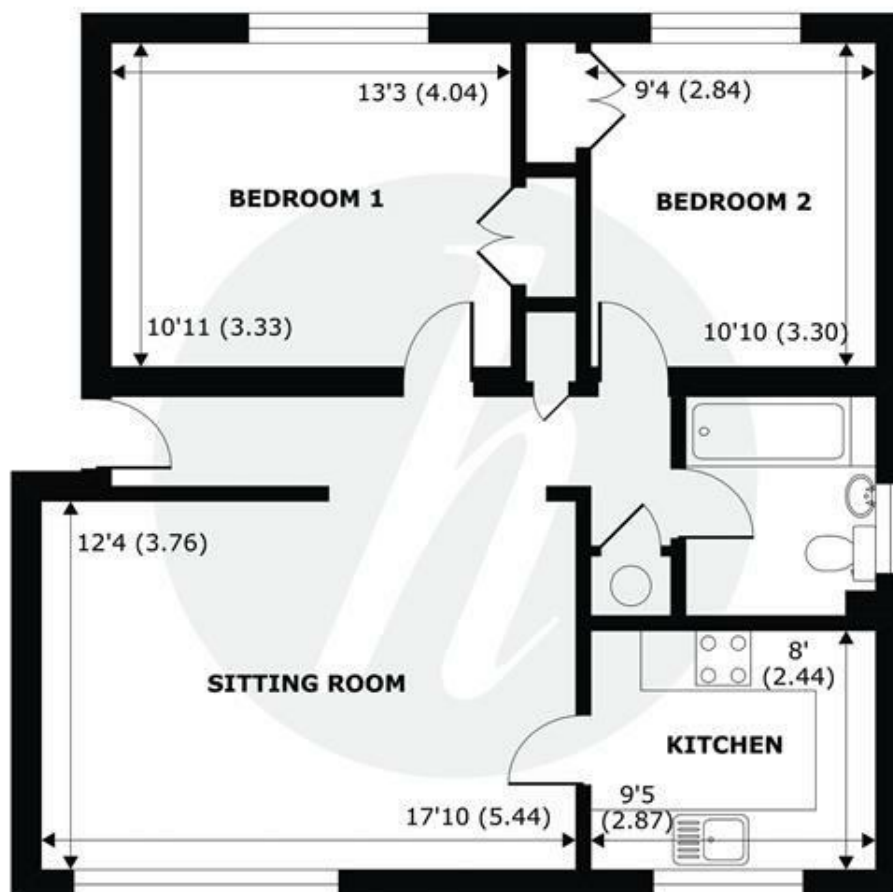
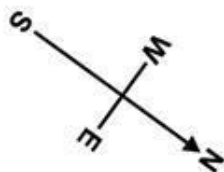
A spacious, two double bedroom ground floor apartment that has been refurbished throughout to a high standard and floods natural light. The property benefits from having a garage and being in a convenient location, close to Windsor town centre and mainline rail.

Energy Efficiency Rating		
	Current	Potential
Very energy efficient - lower running costs		
(92 plus) A		
(81-91) B		
(69-80) C		
(55-68) D		65
(39-54) E	44	
(21-38) F		
(1-20) G		
Not energy efficient - higher running costs		
England & Wales		EU Directive 2002/91/EC 

Features

- Two bedroom apartment
- Modern finish throughout
- Garage included
- Tax Band D & EPC E
- Permit Parking Available
- Ground floor
- Unfurnished
- Close to town centre
- Available end of October
- Visitors Bays

NOT TO SCALE



GROUND FLOOR
abt 849 SQFT (78.8 SQMT)

APPROX. GROSS INTERNAL FLOOR AREA 734 SQFT 68.1 SQM
APPROX. GROSS EXTERNAL FLOOR AREA 849 SQFT 78.8 SQM

Alma Road, Windsor, SL4



Whilst every attempt has been made to ensure the accuracy of the floor plan contained here, measurements of doors, windows and rooms are approximate and no responsibility is taken for any error, omission or misstatement. These plans are for representation purposes only as defined by RICS Code of Measuring Practice and should be used as such by any prospective purchaser. Specifically no guarantee is given on the total square footage of the property if quoted on this plan. Any figure given is for initial guidance only and should not be relied on as a basis of valuation.

Copyright nichecom.co.uk 2019 Produced for Hardings ref. 458317



11 High Street, Windsor, Berkshire, SL4 1LD,
T: 01753 833 118 | E: info@hardings.co.uk
www.hardings.co.uk

