



# HARDINGS



Hogarth House 29-31 Sheet Street  
Asking Price £400,000





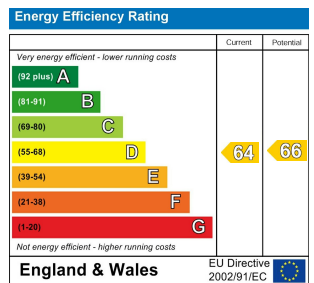
Located in Hogarth House on Sheet Street, just moments from Windsor Town Centre, this well-presented two double bedroom apartment offers modern, low-maintenance living in a highly convenient setting. The property features a spacious open plan living area and a contemporary kitchen with integrated Siemens appliances, two double bedrooms and two bathrooms - one being en-suite.

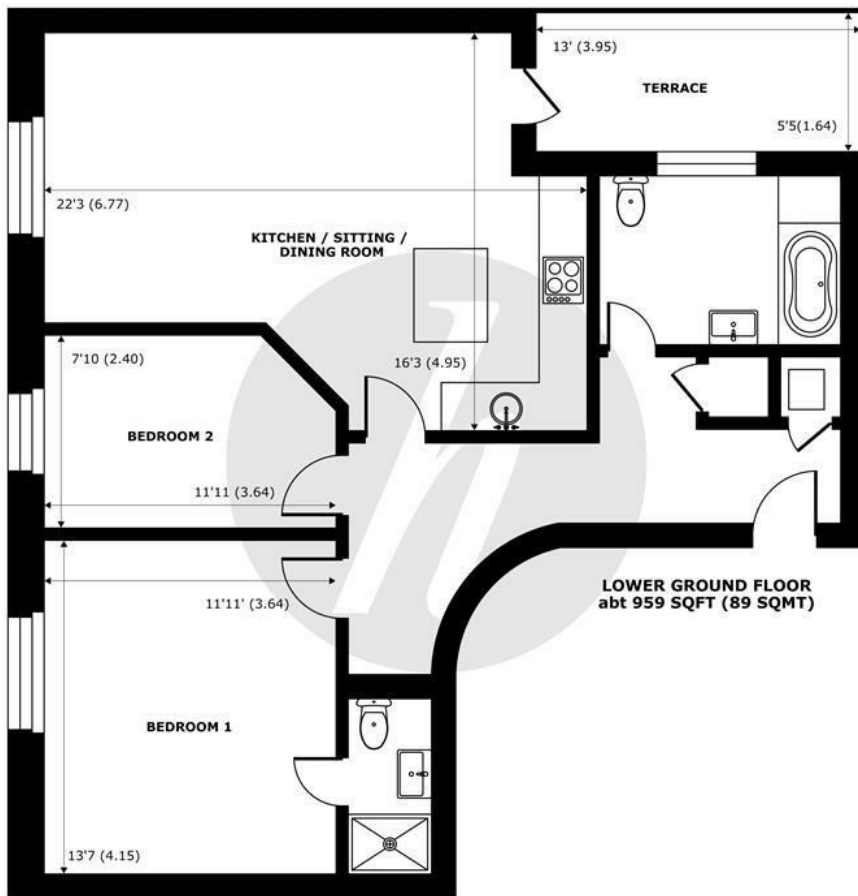
Presented in immaculate condition throughout, the apartment also benefits from secure allocated off-street parking, a private storage room and a private courtyard. Offered to the market with no onward chain.

An excellent central Windsor home within easy reach of shops, restaurants and transport links.

## Features

- Two Double Bedrooms
- Integrated Siemens Appliances in Kitchen
- Secure Off Street Allocated Parking
- Immaculate Condition Throughout
- Private Storage Room
- Open Plan Living
- Two Bathrooms
- No Onward Chain
- Lift Access
- Private Courtyard





## Sheet Street, Windsor, SL4

Approximate Internal Area = 808 sq ft / 75 sq m

Approximate External Area = 959 sq ft / 89 sq m

For identification only - Not to scale



Floor plan produced in accordance with RICS Property Measurement 2nd Edition, Incorporating International Property Measurement Standards (IPMS2 Residential). © nichecom 2026. Produced for Hardings. REF: 1418068





11 High Street, Windsor, Berkshire, SL4 1LD,  
T: 01753 833 118 | E: [info@hardings.co.uk](mailto:info@hardings.co.uk)  
[www.hardings.co.uk](http://www.hardings.co.uk)

