



# HARDINGS

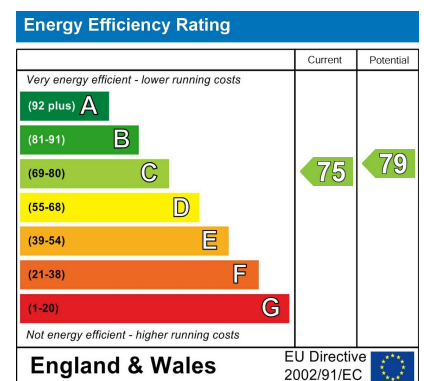


Wood Close  
Offers Over £500,000



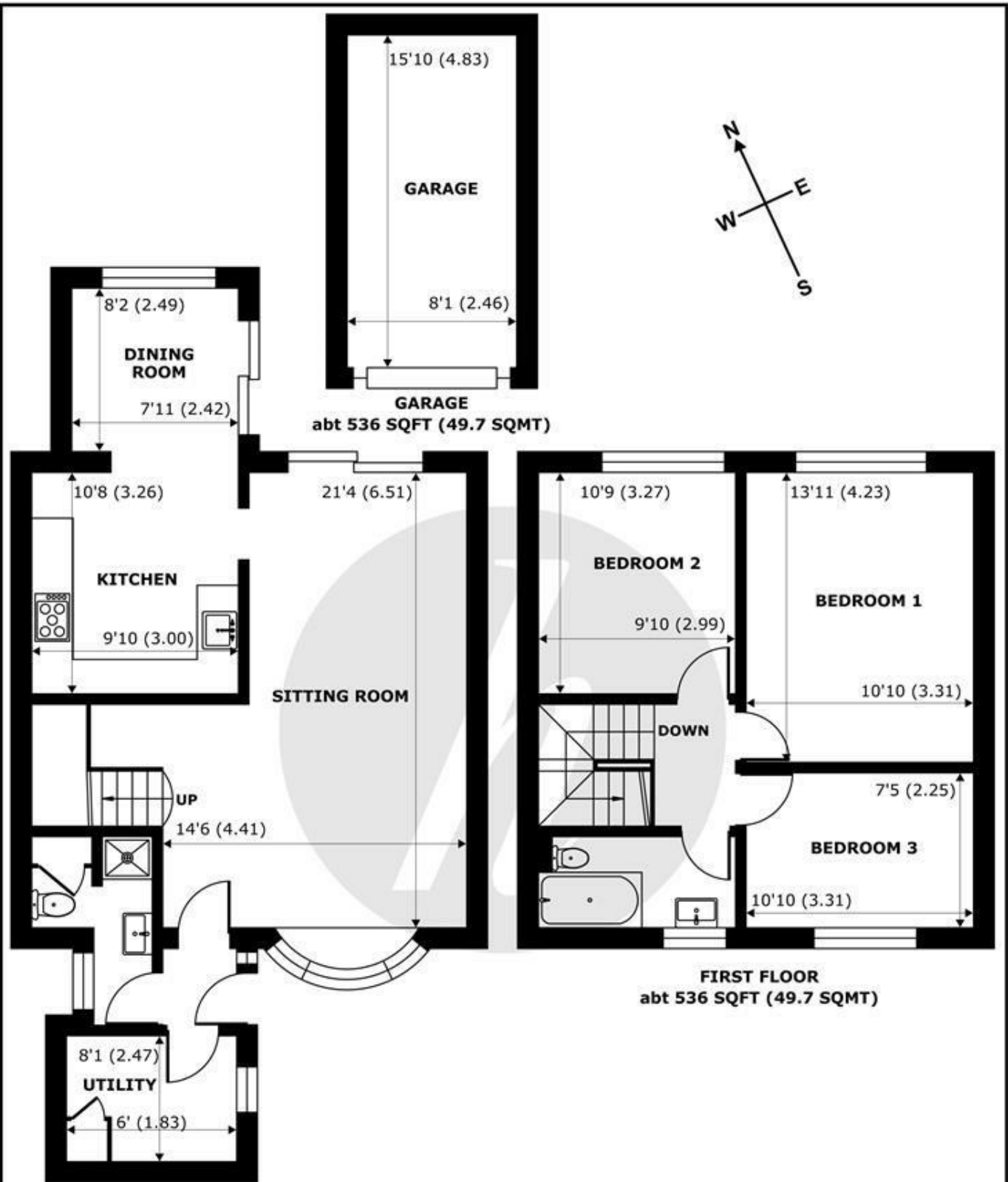


A well presented BISF (Pre-Fab) 3-bedroom terraced property situated in a quiet, sought-after cul-de-sac, a short distance to shops, restaurants, and both mainline railway stations in Windsor town centre. This property features a separate garage and a convenient utility room, while also benefitting from a private low maintenance garden and solar panels. Located in close proximity to good local schools, the property also offers further potential to extend (STPP).



## Features

- Three Bedrooms
- Utility Room
- Potential to Extend STPP
- Solar Panels
- Council Tax D
- Two Bathrooms
- Modern Kitchen
- Quiet Residential Area
- Walking distance to Town Centre
- Garage



**GARAGE**  
abt 536 SQFT (49.7 SQMT)

**FIRST FLOOR**  
abt 536 SQFT (49.7 SQMT)

**GROUND FLOOR**  
abt 742 SQFT (68.9 SQMT)

## Wood Close, Windsor, Windsor, SL4

Approximate Internal Area = 1061 sq ft / 98.5 sq m (Exclude Garage)  
 Approximate External Area = 1278 sq ft / 118.7 sq m (Exclude Garage)

For identification only - Not to scale

Floor plan produced in accordance with RICS Property Measurement 2nd Edition, Incorporating International Property Measurement Standards (IPMS2 Residential). © nichecom 2026. Produced for Hardings. REF: 1450589





11 High Street, Windsor, Berkshire, SL4 1LD,  
T: 01753 833 118 | E: info@hardings.co.uk  
www.hardings.co.uk

