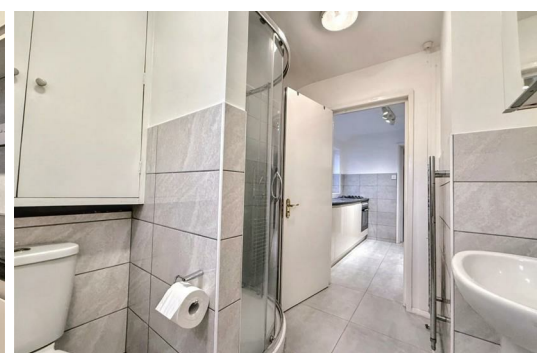




HARDINGS



Victoria Street
£1,750 PCM

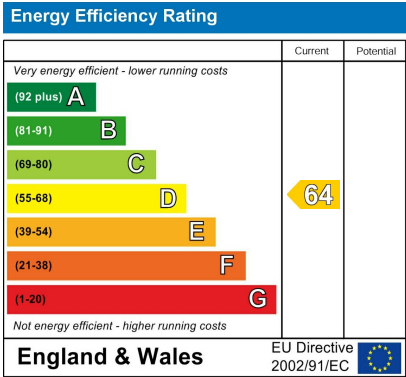




Nestled in the heart of Windsor, on the esteemed Victoria Street, this charming three-bedroom duplex apartment offers a unique opportunity for those seeking a prime location in the town centre. Spanning almost 1000 square feet, the property is perfectly suited for families or sharers looking for a comfortable and convenient living space.

Upon entering, you will find a welcoming reception room. The property boasts three well-proportioned bedrooms, one of which features an en-suite bathroom. The property benefits from private access, situated above a selection of shops. With its prime location, you will find yourself just a stone's throw away from local amenities, parks, and the picturesque River Thames.

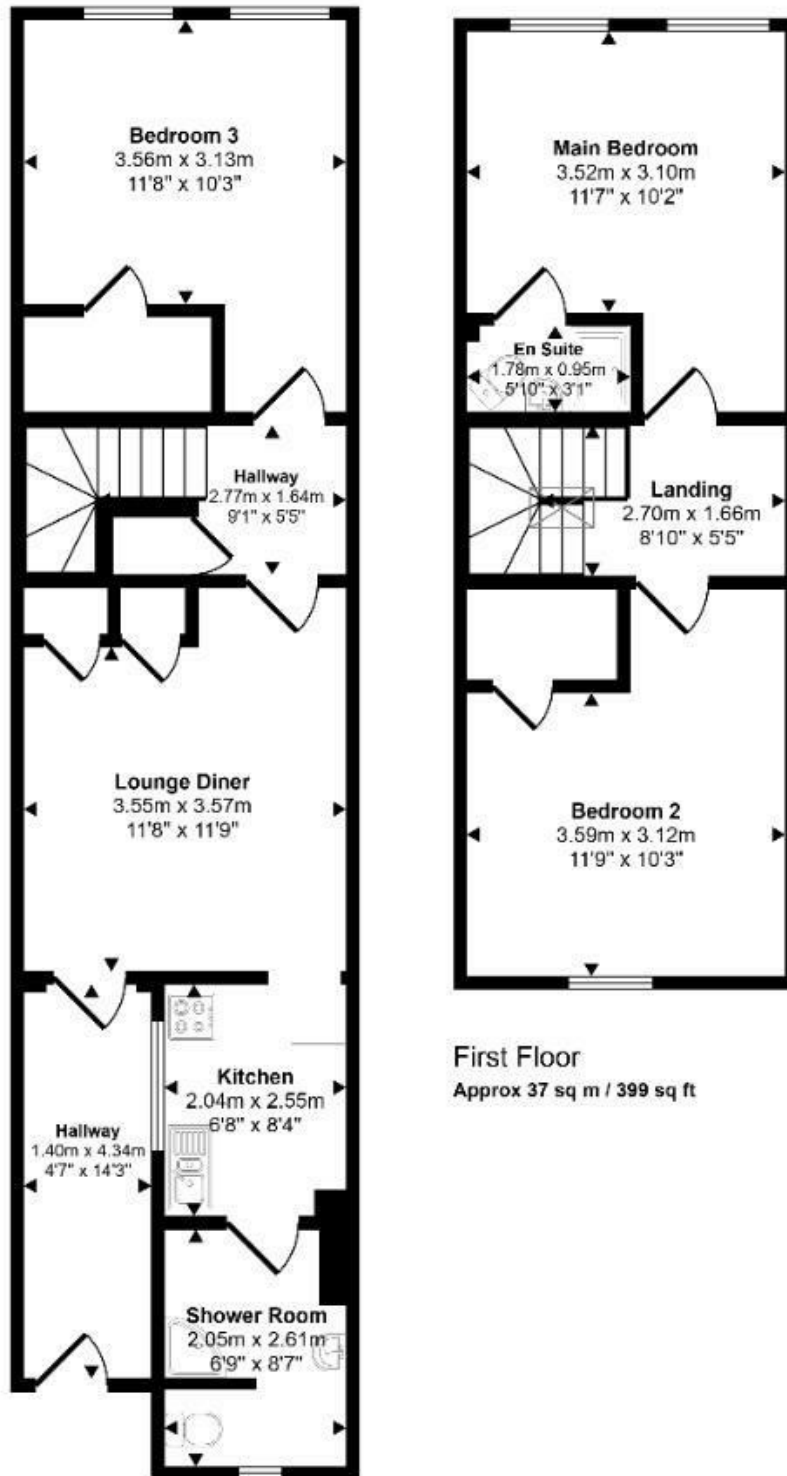
Available for immediate occupancy and offered part-furnished.



Features

- Town Centre Location
- 2 bathrooms (1x en-suite)
- Private access
- Furnished
- Three bedrooms
- Duplex apartment
- Available Now
- Suitable for families or sharers

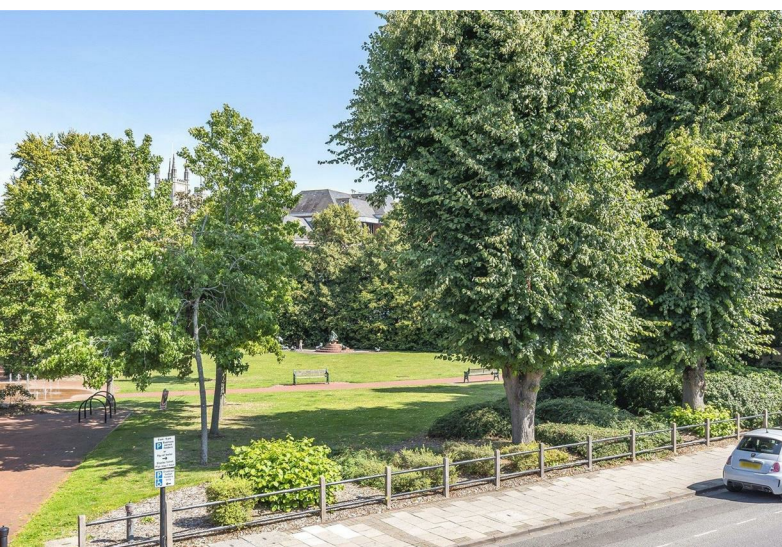
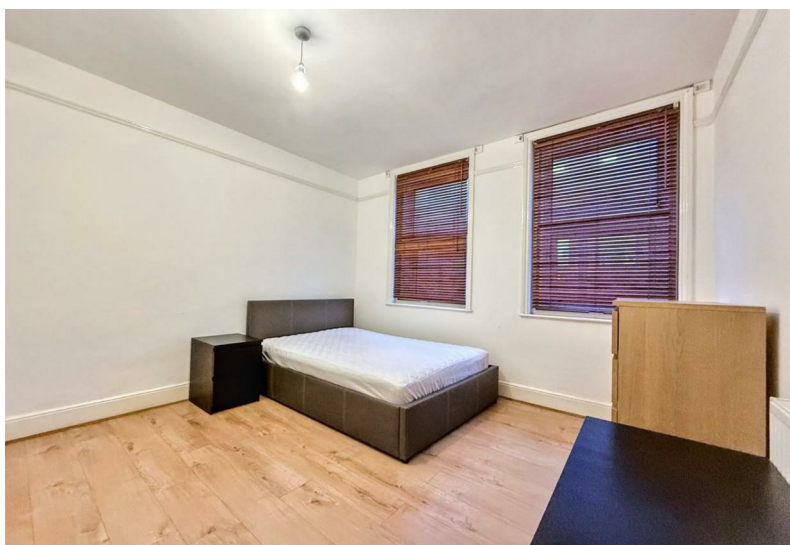
Approx Gross Internal Area
93 sq m / 999 sq ft



First Floor
Approx 37 sq m / 399 sq ft

Ground Floor
Approx 56 sq m / 600 sq ft

This floorplan is only for illustrative purposes and is not to scale. Measurements of rooms, doors, windows, and any items are approximate and no responsibility is taken for any error, omission or mis-statement. Icons of items such as bathroom suites are representations only and may not look like the real items. Made with Made Snappy 360.



11 High Street, Windsor, Berkshire, SL4 1LD,
T: 01753 833 118 | E: info@hardings.co.uk
www.hardings.co.uk

