



HARDINGS




Kings Road
£2,550 PCM





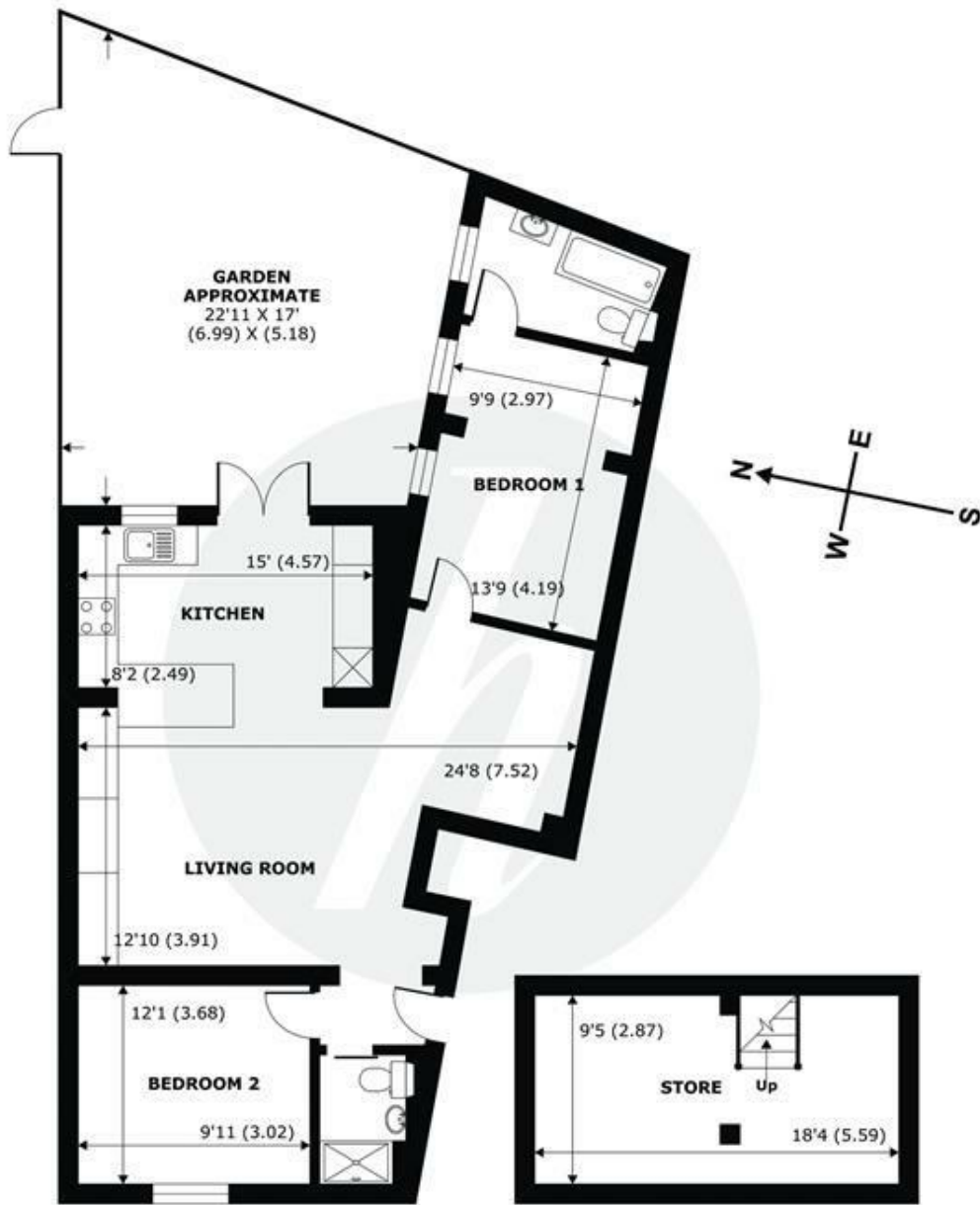
A stunning ground floor conversion apartment situated on a sought-after road in Windsor's town centre. Featuring two bedrooms, two bathrooms and a well-designed open plan kitchen/living space the apartment further benefits from a basement storage space, rear garden and permit parking for two cars. Unfurnished. EPC:C. Council Tax Band D.

Energy Efficiency Rating		
	Current	Potential
Very energy efficient - lower running costs		
(92 plus) A		
(81-91) B		
(69-80) C	76	78
(55-68) D		
(39-54) E		
(21-38) F		
(1-20) G		
Not energy efficient - higher running costs		
England & Wales	EU Directive 2002/91/EC 	

Features

- Stunning conversion apartment
- Bespoke kitchen with Neff appliances and quartz worktops
- Open plan kitchen/living space with separate dining area
- Rear courtyard garden overlooking Crown land
- Unfurnished
- Permit parking for two cars
- Close to town centre
- Tax Band D & EPC C

NOT TO SCALE



APPROX. GROSS INTERNAL FLOOR AREA 1040 SQFT 96.6 SQM

Kings Road, Windsor, SL4


HARDINGS

Whilst every attempt has been made to ensure the accuracy of the floor plan contained here, measurements of doors, windows and rooms are approximate and no responsibility is taken for any error, omission or misstatement. These plans are for representation purposes only as defined by RICS Code of Measuring Practice and should be used as such by any prospective purchaser. Specifically no guarantee is given on the total square footage of the property if quoted on this plan. Any figure given is for initial guidance only and should not be relied on as a basis of valuation.

This floor plan was constructed using measurements provided to Niche Communications by a third party.
Copyright nichecom.co.uk 2019 Produced for Hardings ref. 499923



11 High Street, Windsor, Berkshire, SL4 1LD,
T: 01753 833 118 | E: info@hardings.co.uk
www.hardings.co.uk

