



Dagmar Road  
Asking Price £650,000



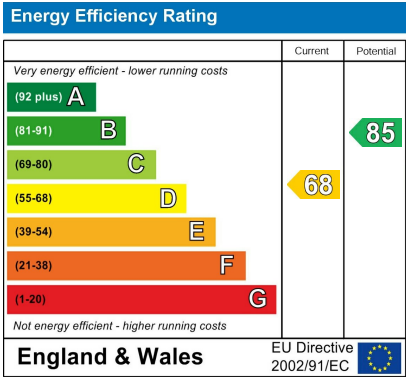




Located on a quiet one-way residential road moments from Windsor town centre, this two-bedroom, two-bathroom home combines period features with modern living. This home has been recently renovated to a stylish, and high standard, throughout and has potential to extend further (STPP).

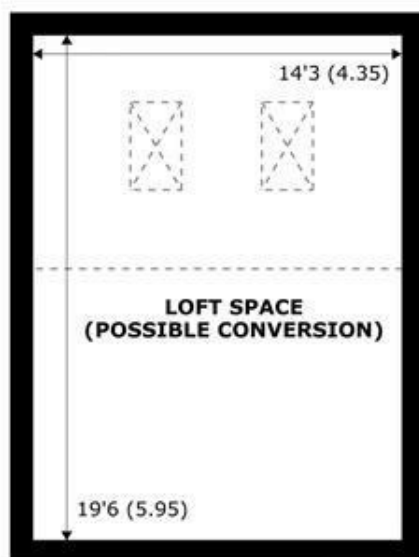
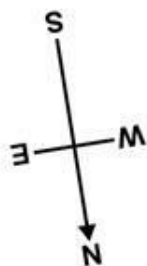
The property includes a bright open-plan kitchen diner with a modern integrated kitchen, a bright separate reception on the raised ground floor and a delightful private south facing garden.

Offered to the market with no onward chain.

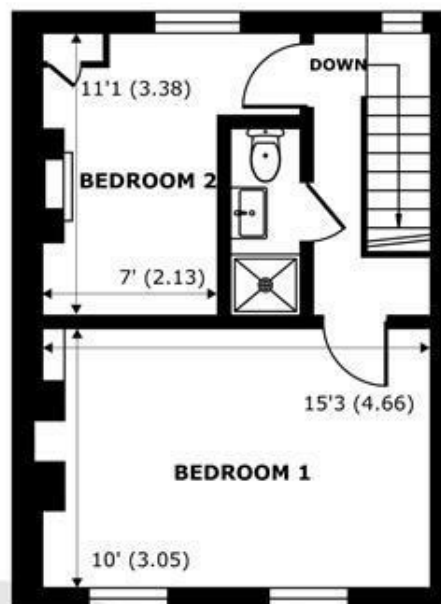


### Features

- Two Bedrooms
- Town Centre Location
- Private South Facing Garden
- Stylishly Renovated Throughout
- Two Bathrooms
- Potential to Extend (STPP)
- Open Plan Kitchen Diner
- Modern Integrated Kitchen
- Quiet One Way Residential Road
- No Onward Chain

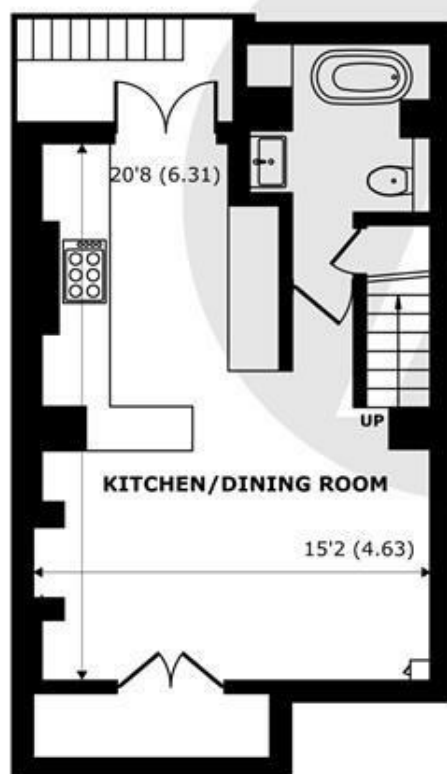


**SECOND FLOOR**  
abt 129 SQFT (12 SQMT)

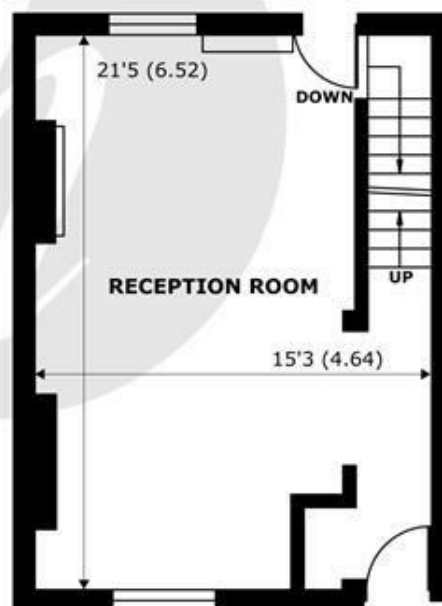


**FIRST FLOOR**  
abt 324 SQFT (30 SQMT)

Denotes restricted  
head height



**BASEMENT**  
abt 371 SQFT (34.4 SQMT)



**GROUND FLOOR**  
abt 329 SQFT (30.5 SQMT)

## Dagmar Road, Windsor, SL4

Approximate Internal Area = 1174 sq ft / 109 sq m (excludes loft space)

Approximate External Area = 1559 sq ft / 144.8 sq m

Limited Use Area(s) = 150 sq ft / 14 sq m

For identification only - Not to scale



Floor plan produced in accordance with RICS Property Measurement 2nd Edition,  
Incorporating International Property Measurement Standards (IPMS2 Residential). © nichecom 2025.  
Produced for Hardings. REF: 1310414







11 High Street, Windsor, Berkshire, SL4 1LD,  
T: 01753 833 118 | E: [info@hardings.co.uk](mailto:info@hardings.co.uk)  
[www.hardings.co.uk](http://www.hardings.co.uk)

