



HARDINGS




Little Acre
£1,850 Per Month





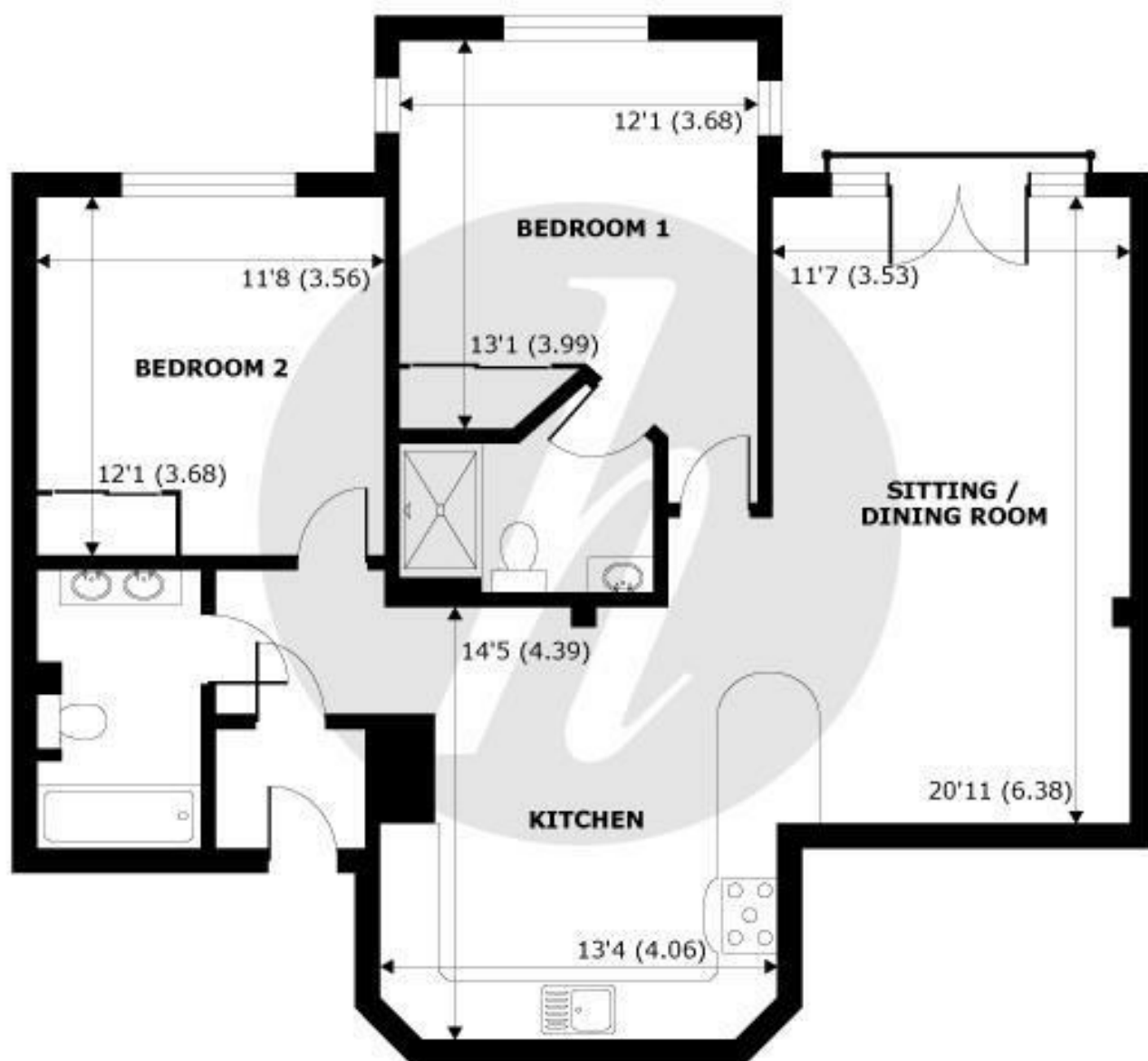
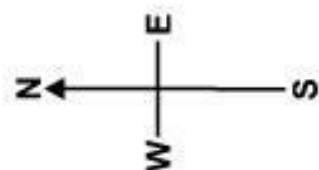
Stylish first floor two bedroom, two bathroom apartment set in a beautifully kept gated development with secure underground parking for one car. A short distance from the town centre and very close to Windsor Great Park and the Long Walk.

Energy Efficiency Rating		
	Current	Potential
Very energy efficient - lower running costs		
(92 plus) A		
(81-91) B		
(69-80) C	75	77
(55-68) D		
(39-54) E		
(21-38) F		
(1-20) G		
Not energy efficient - higher running costs		
England & Wales	EU Directive 2002/91/EC 	

Features

- High spec two bedroom apartment
- Unfurnished
- Close to The Great Park
- Available Now
- Underfloor heating in the kitchen & en-suite
- Two bathrooms
- Sought after location
- Underground parking
- Council Tax Band E

NOT TO SCALE



SECOND FLOOR
abt 1061 SQFT (98.56 SQMT)

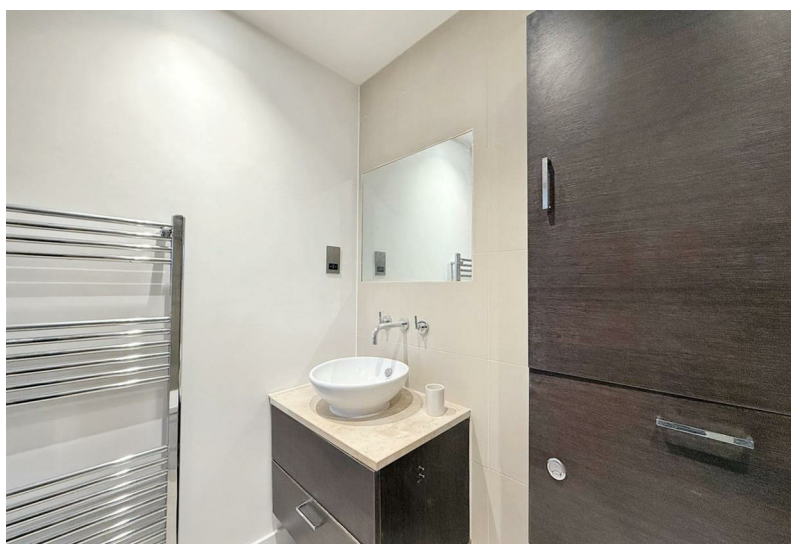
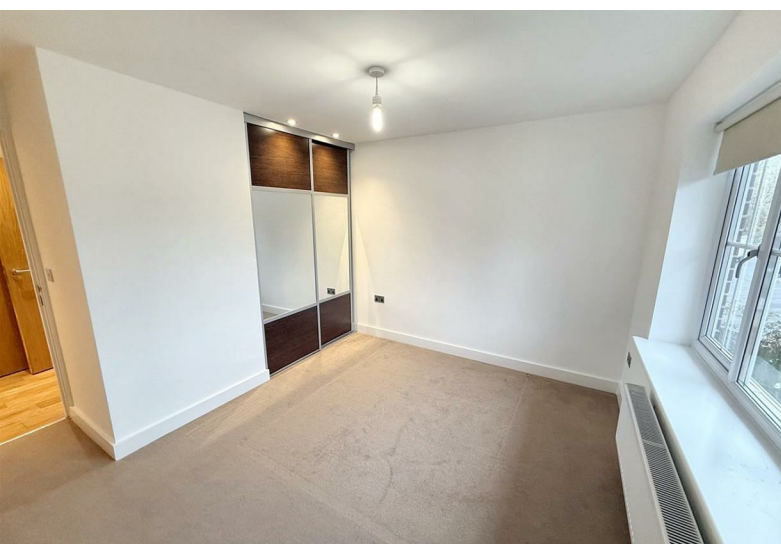
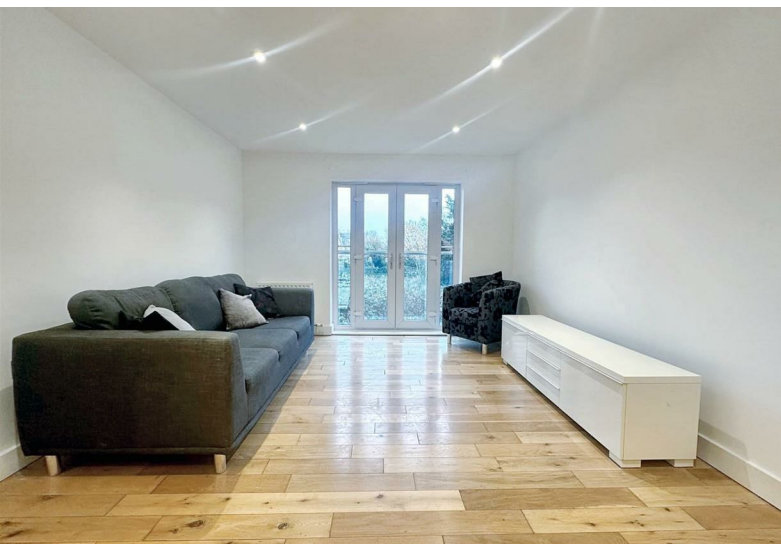
APPROX. GROSS EXTERNAL FLOOR AREA 1061 SQFT 98.56 SQM

Littleacre, Hermitage Lane, Windsor, SL4



Whilst every attempt has been made to ensure the accuracy of the floor plan contained here, measurements of doors, windows and rooms are approximate and no responsibility is taken for any error, omission or misstatement. These plans are for representation purposes only as defined by RICS Code of Measuring Practice and should be used as such by any prospective purchaser. Specifically no guarantee is given on the total square footage of the property if quoted on this plan. Any figure given is for initial guidance only and should not be relied on as a basis of valuation.

Copyright nichecom.co.uk 2016 Produced for Hardings ref. 120063



11 High Street, Windsor, Berkshire, SL4 1LD,
T: 01753 833 118 | E: info@hardings.co.uk
www.hardings.co.uk

