



HARDINGS




Perrycroft
Offers In Excess Of £600,000



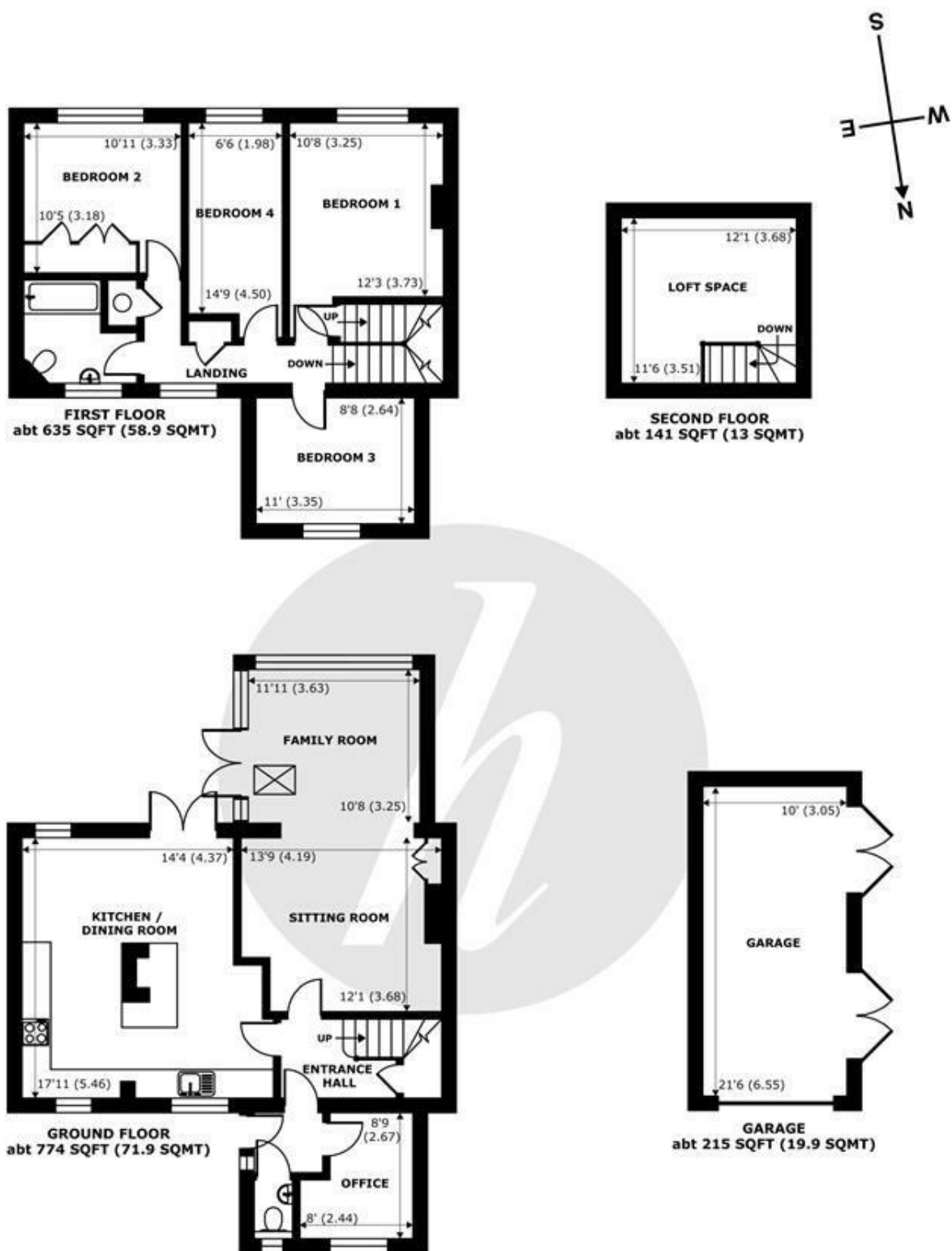


An exceptionally spacious four-bedroom semi-detached home, ideally situated on the sought-after Perrycroft, just off Clewer Hill Road. This beautifully presented property features a contemporary kitchen with a central island, a generous double reception room, and views overlooking a private, south-facing garden. Additionally include a dedicated study/home office on the ground floor, ample driveway parking, and convenient side access.

Energy Efficiency Rating		
	Current	Potential
Very energy efficient - lower running costs		
(92 plus) A		
(81-91) B		81
(69-80) C	69	
(55-68) D		
(39-54) E		
(21-38) F		
(1-20) G		
Not energy efficient - higher running costs		
England & Wales	EU Directive 2002/91/EC 	

Features

- Four Bedroom House
- Garage
- Cloakroom
- Study
- Driveway Parking
- South Facing Garden
- Open plan Kitchen/Breakfast Room
- Reception Room with Conservatory Extension



Perrycroft, Windsor, SL4

Approximate Internal Area = 1550 sq ft / 143.9 sq m (Exclude Garage)

Approximate External Area = 1864 sq ft / 173.1 sq m (Exclude Garage)

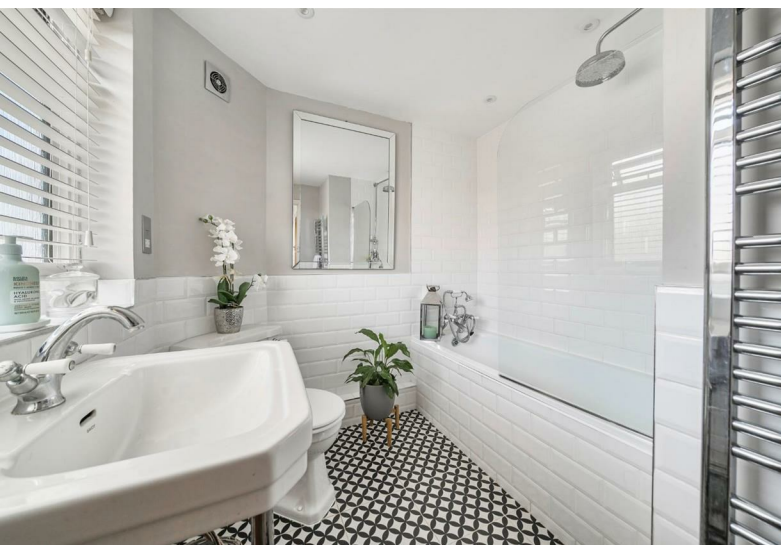
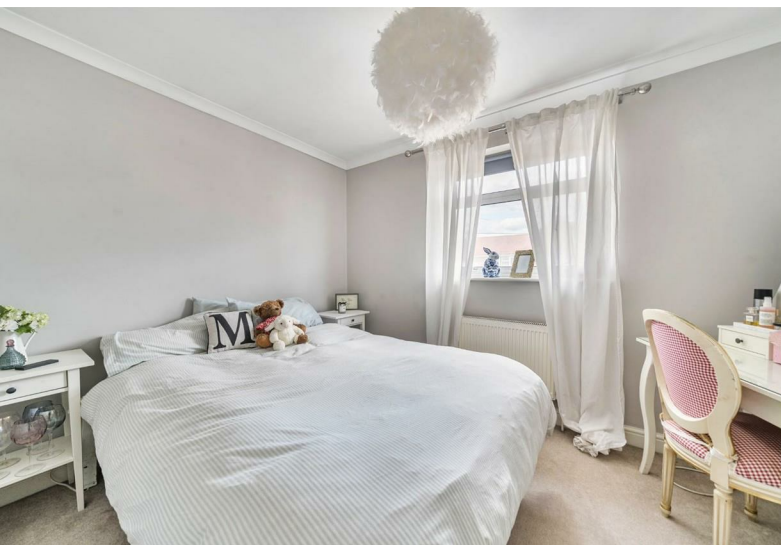
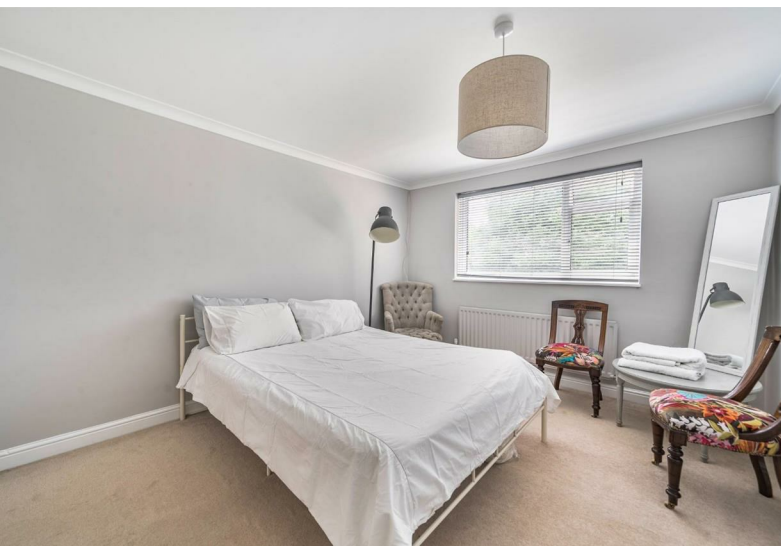
Garage Area = 215 sq ft / 19.9 sq m

For identification only - Not to scale



Floor plan produced in accordance with RICS Property Measurement 2nd Edition, Incorporating International Property Measurement Standards (IPMS2 Residential). © nichecom 2025. Produced for Hardings. REF: 1319346





11 High Street, Windsor, Berkshire, SL4 1LD,
T: 01753 833 118 | E: info@hardings.co.uk
www.hardings.co.uk

