




Wolf Lane
Guide Price £299,975



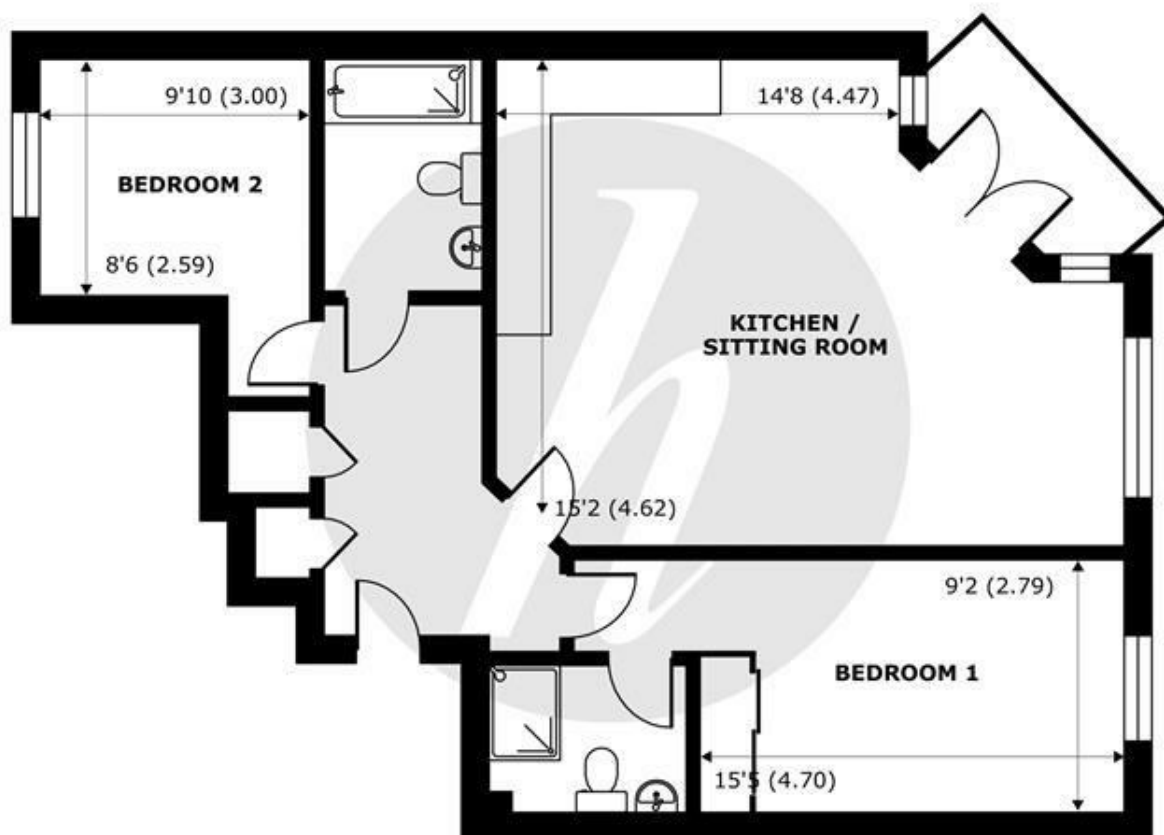
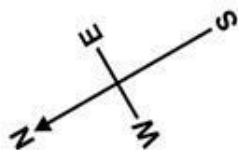


A well presented 2 bedroom ground floor apartment in one of West Windsor's most popular developments. This light & airy property is conveniently located within close proximity to local parks & amenities and is within a 30 minute walk in to Windsor town centre. The flat, which is one of the largest in the development, benefits from a large open plan reception/ kitchen, terrace, allocated parking and locked space for bikes.

| Energy Efficiency Rating | | |
|---|---|-----------|
| | Current | Potential |
| Very energy efficient - lower running costs | | |
| (92 plus) A | | |
| (81-91) B | | |
| (69-80) C | 79 | 79 |
| (55-68) D | | |
| (39-54) E | | |
| (21-38) F | | |
| (1-20) G | | |
| Not energy efficient - higher running costs | | |
| England & Wales | EU Directive 2002/91/EC  | |

Features

- 2 Bedrooms, 2 Bathrooms
- Secure Bike Store/Lock-up
- Close to local Parks & Amenities
- Spacious Reception/Kitchen
- Residents Allocated Parking
- One of The Largest Flats in the Development



GROUND FLOOR
abt 958 SQFT (89 SQMT)

Urbis, Wolf Lane, Windsor, SL4

Approximate Internal Area = 818 sq ft / 76 sq m (Exclude Garage & Outbuildings)

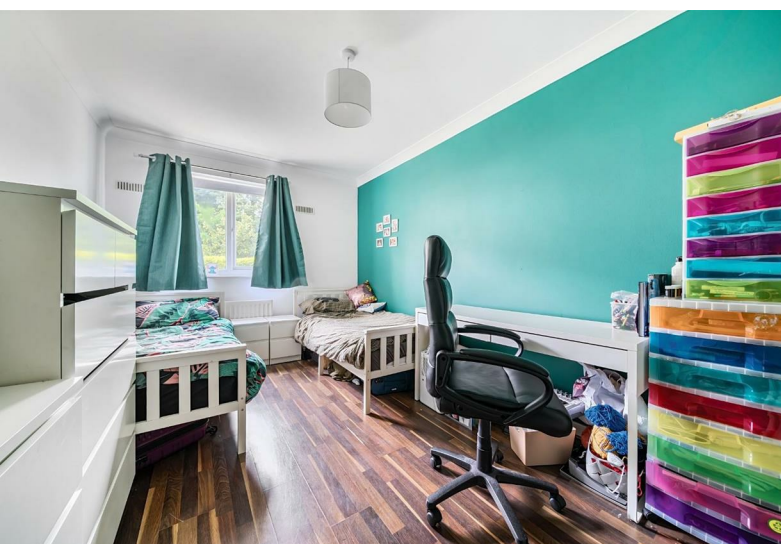
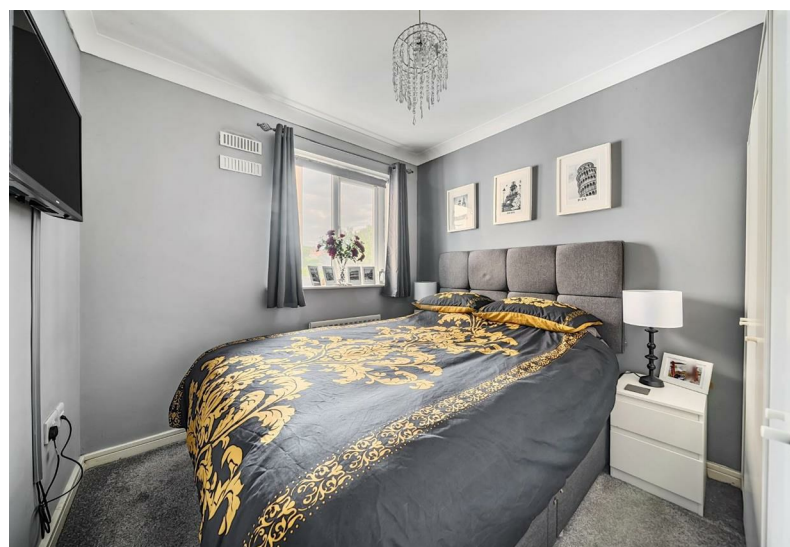
Approximate External Area = 958 sq ft / 89 sq m (Exclude Garage & Outbuildings)

For identification only - Not to scale



Floor plan produced in accordance with RICS Property Measurement 2nd Edition,
Incorporating International Property Measurement Standards (IPMS2 Residential). © nichecom 2025.
Produced for Hardings. REF: 1321782





11 High Street, Windsor, Berkshire, SL4 1LD,
T: 01753 833 118 | E: info@hardings.co.uk
www.hardings.co.uk

