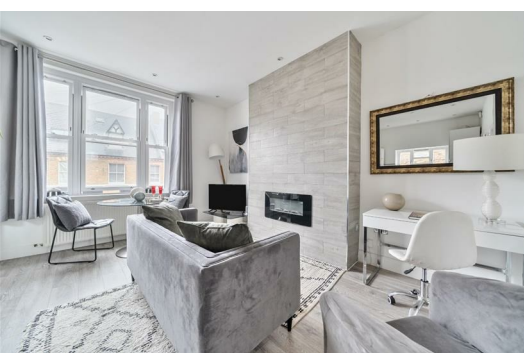




HARDINGS

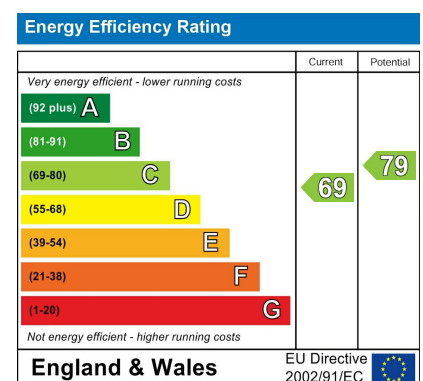


Grove Road
£1,600 PCM



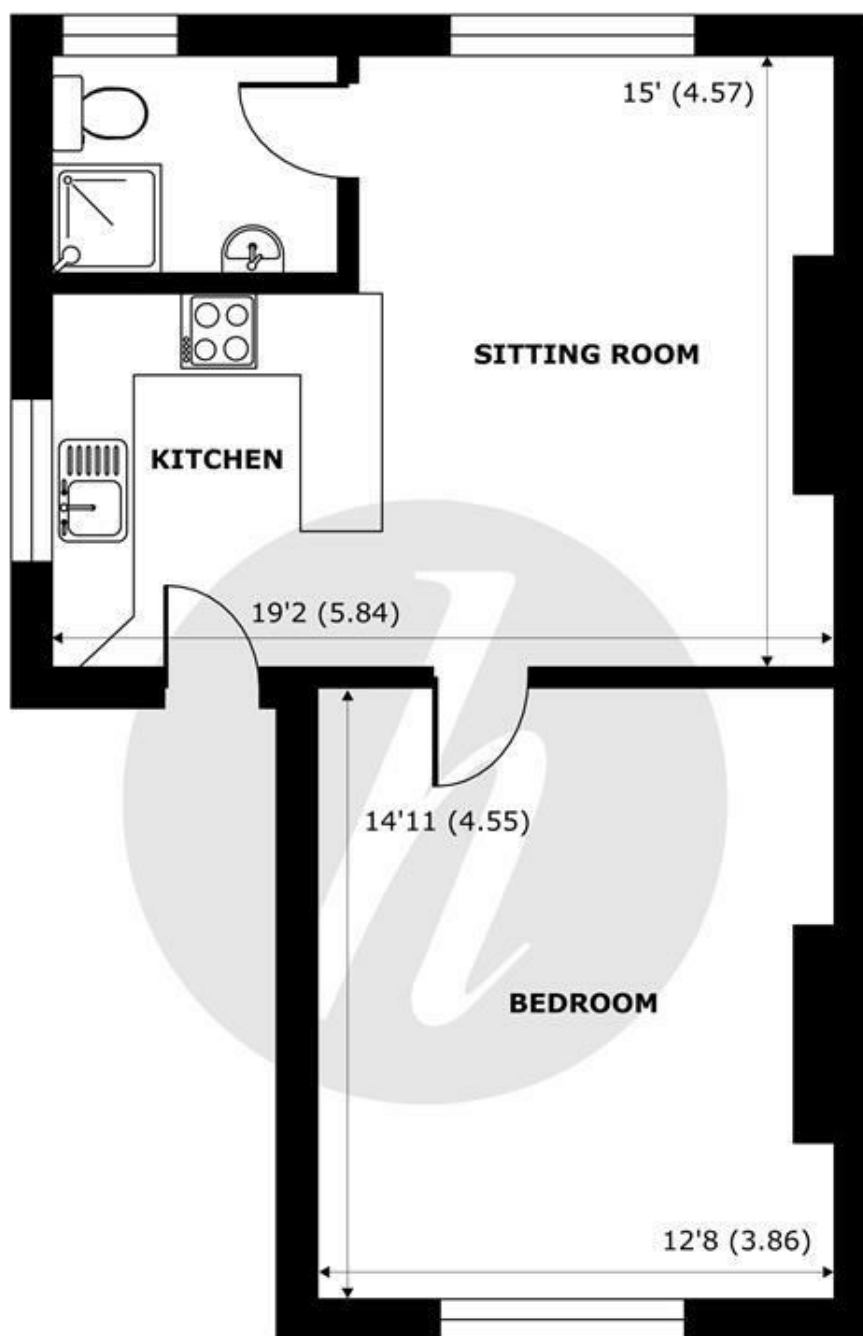
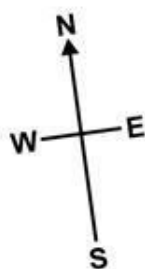


A beautifully presented one bedroom apartment located moments from Town Centre on Grove Road. This delightful apartments benefits from a dual aspect open plan living area with a breakfast bar, a modern integrated kitchen, reception dining area and a sleek & stylish shower room.



Features

- Period Apartment
- Breakfast Bar
- Open Plan Living
- Spacious Bedroom
- Furnished
- Modern & Contemporary Finish
- Modern Integrated Kitchen
- Sleek Shower Room
- Moments from Windsor Town Centre
- Available 12th November



FIRST FLOOR
abt 483 SQFT (44.8 SQMT)

Grove Road, Windsor, SL4

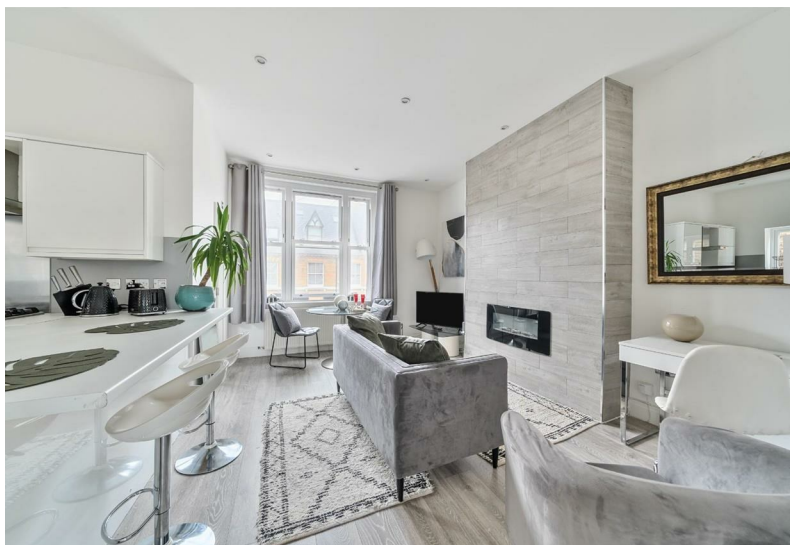
Approximate Internal Area = 483 sq ft / 44.8 sq m

For identification only - Not to scale



Floor plan produced in accordance with RICS Property Measurement 2nd Edition,
Incorporating International Property Measurement Standards (IPMS2 Residential). © nichecom 2025.
Produced for Hardings. REF: 1303552





11 High Street, Windsor, Berkshire, SL4 1LD,
T: 01753 833 118 | E: info@hardings.co.uk
www.hardings.co.uk

