



# HARDINGS




Alexandra Road  
£3,450 PCM



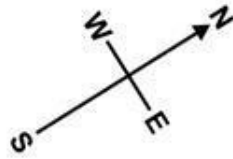


An attractive, modernised, four bedroom terraced house located on the fringes of the Golden Triangle, just a short walk to Windsor's centre. The property comprises entrance hall, downstairs WC, large living/dining room, eat-in kitchen, three double bedrooms (one with en-suite), one single bedroom and a family bathroom. West facing patio garden with brick outhouse. On-street permit parking. Unfurnished. Council Tax Band E. EPC:D.

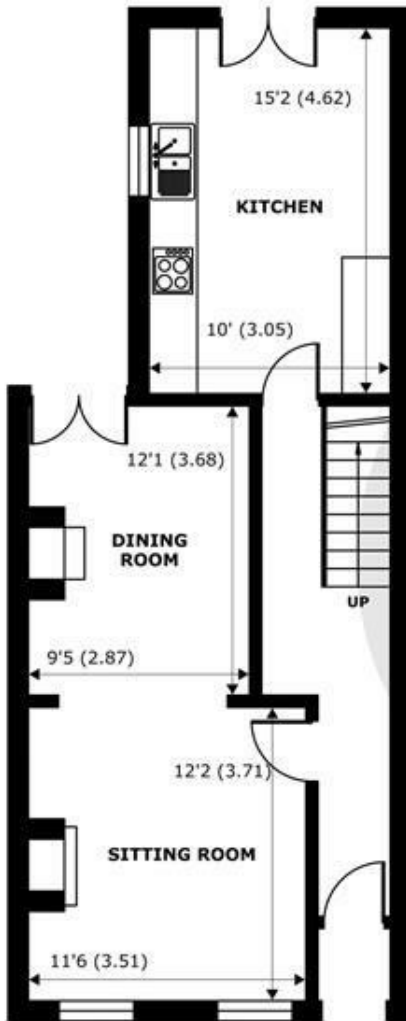
Energy Efficiency Rating		Current	Potential
Very energy efficient - lower running costs			
(92 plus) A			
(81-91) B			83
(69-80) C			
(55-68) D		67	
(39-54) E			
(21-38) F			
(1-20) G			
Not energy efficient - higher running costs			
<b>England &amp; Wales</b>		EU Directive 2002/91/EC 	

## Features

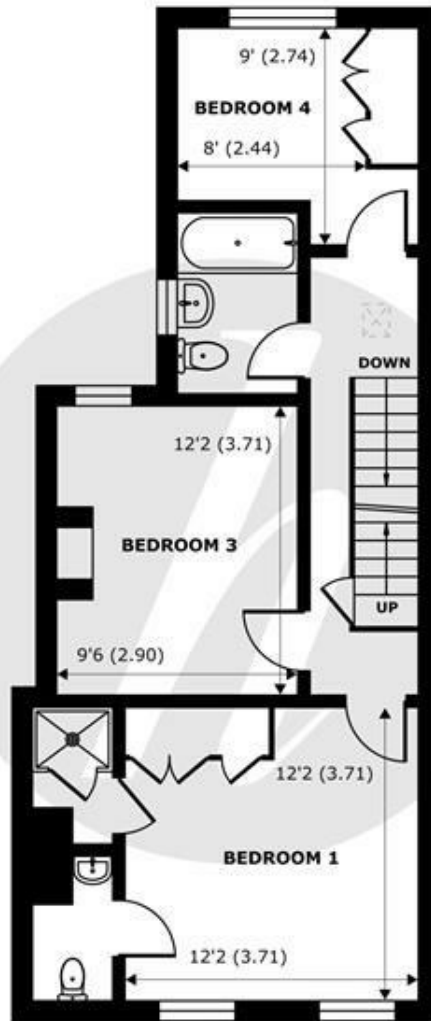
- 4 bedroom terraced house
- Double reception
- West facing patio garden
- Downstairs WC
- 2 bathrooms (1 en-suite)
- Eat in kitchen
- Brick outhouse
- Council Tax: E



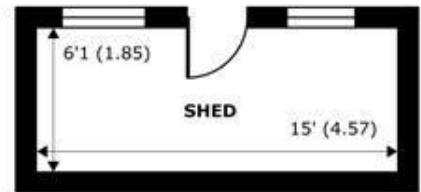
Denotes restricted head height



**GROUND FLOOR**  
abt 622 SQFT (57.7 SQMT)



**FIRST FLOOR**  
abt 636 SQFT (59 SQMT)



**OUTBUILDING**  
abt 128 SQFT (11.8 SQMT)



**SECOND FLOOR**  
abt 354 SQFT (32.8 SQMT)

## Alexandra Road, Windsor, SL4

Approximate Internal Area = 1202 sq ft / 111.6 sq m (Exclude Outbuilding)

Approximate External Area = 1512 sq ft / 140.4 sq m (Exclude Outbuilding)

Limited Use Area(s) = 65 sq ft / 6 sq m

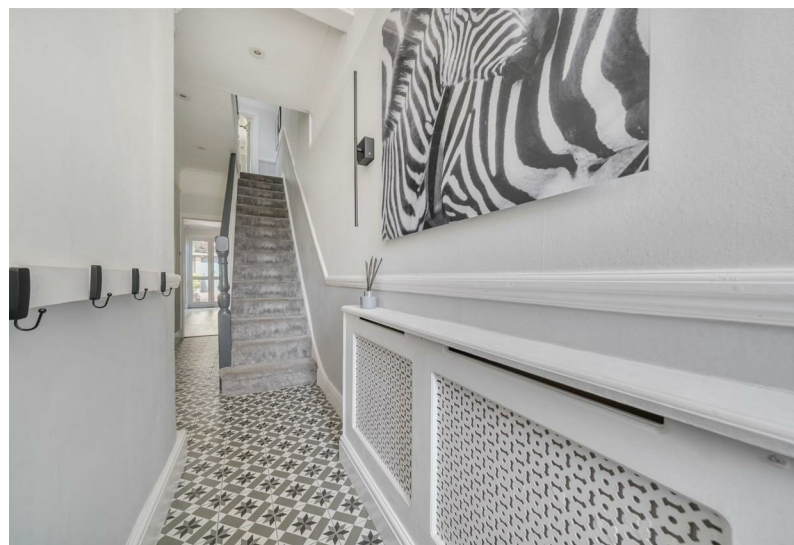
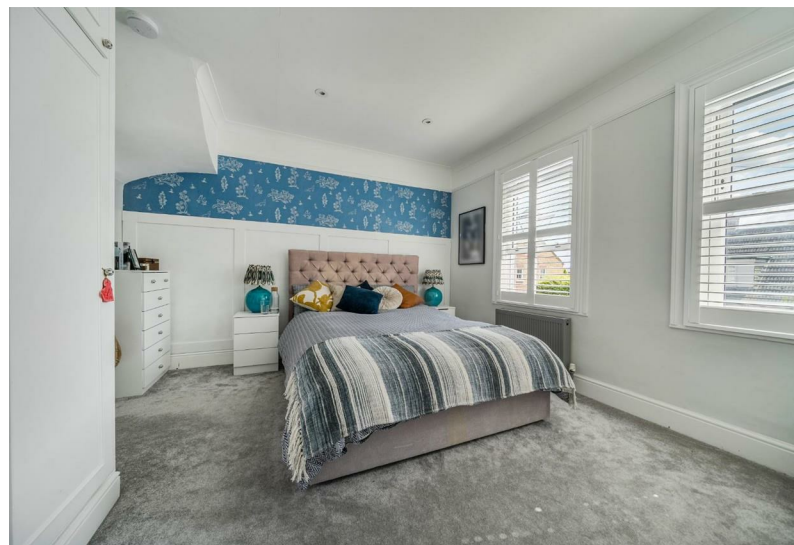
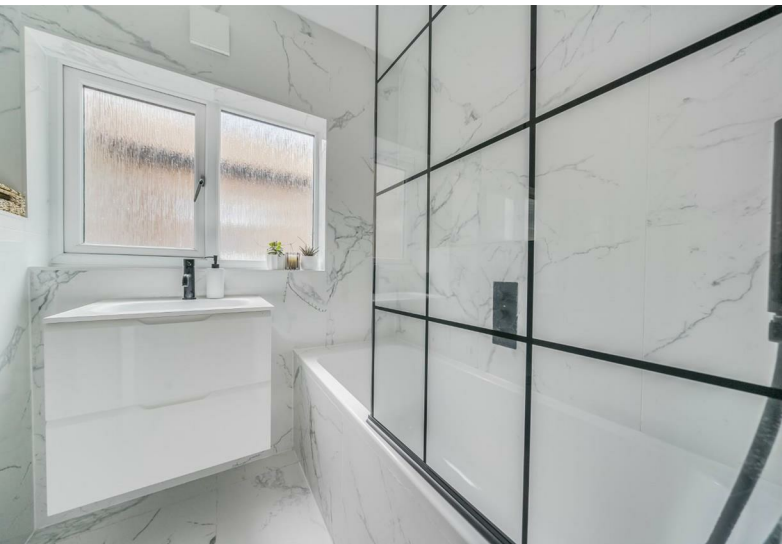
Total = 1267 sq ft / 117.6 sq m

For identification only - Not to scale



Floor plan produced in accordance with RICS Property Measurement Standards incorporating International Property Measurement Standards (IPMS2 Residential). © nichecom 2024. Produced for Hardings. REF: 1109495.





11 High Street, Windsor, Berkshire, SL4 1LD,  
T: 01753 833 118 | E: info@hardings.co.uk  
www.hardings.co.uk

