



HARDINGS



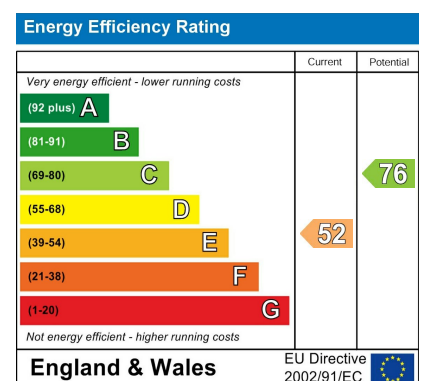
Oxford Road
£1,850 Per Month





A two bedroom, Victorian end of terrace house, situated in a sought after road in Windsor's town centre. The property benefits from an open plan sitting/dining room and a south facing rear courtyard.

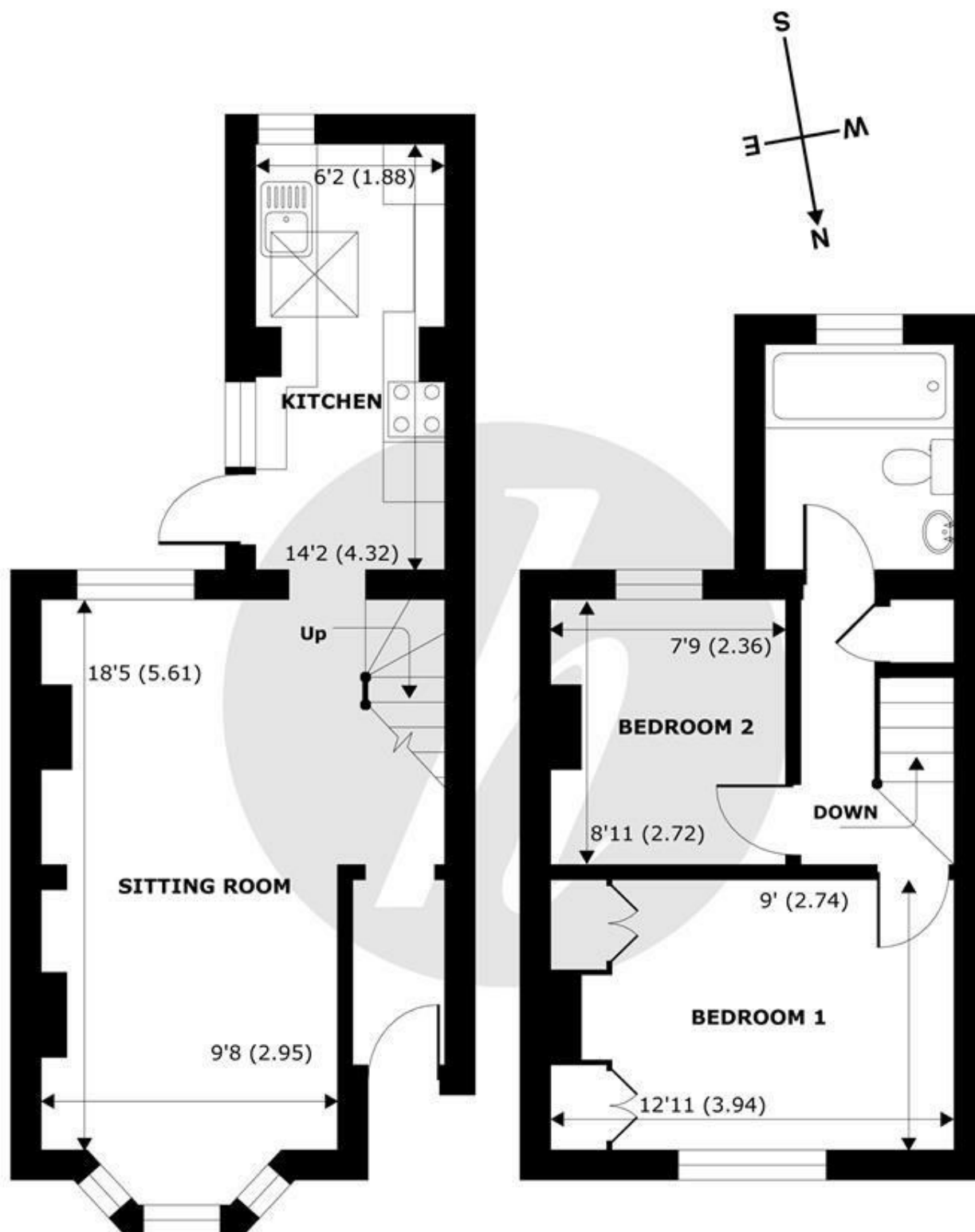
Offered unfurnished, available beginning of April.



Features

- Two bedroom house
- Modern kitchen
- Fitted wardrobes
- Permit parking
- Unfurnished
- Open plan living/dining room
- End of terrace
- South facing rear courtyard garden
- Town Center location
- Tax band D & EPC E

NOT TO SCALE



GROUND FLOOR
abt 444 SQFT (41 SQMT)

FIRST FLOOR
abt 378 SQFT (35 SQMT)

APPROX. GROSS EXTERNAL FLOOR AREA 822 SQFT 76 SQM

Oxford Road, Windsor, SL4



Whilst every attempt has been made to ensure the accuracy of the floor plan contained here, measurements of doors, windows and rooms are approximate and no responsibility is taken for any error, omission or misstatement. These plans are for representation purposes only as defined by RICS Code of Measuring Practice and should be used as such by any prospective purchaser. Specifically no guarantee is given on the total square footage of the property if quoted on this plan. Any figure given is for initial guidance only and should not be relied on as a basis of valuation.

Copyright nichecom.co.uk 2018 Produced for Hardings ref. 250008



11 High Street, Windsor, Berkshire, SL4 1LD,
T: 01753 833 118 | E: info@hardings.co.uk
www.hardings.co.uk

